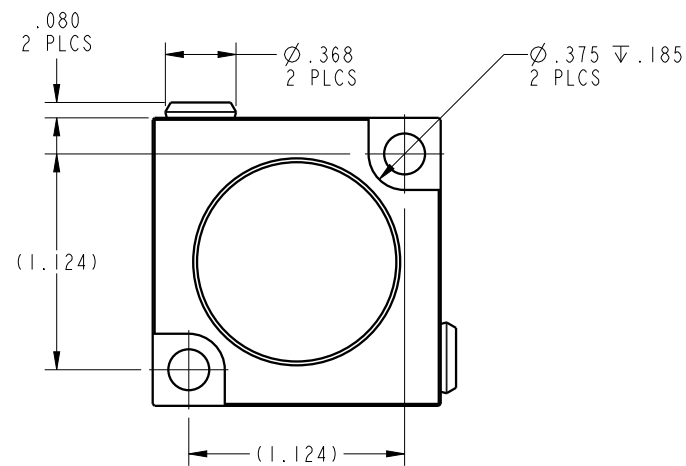
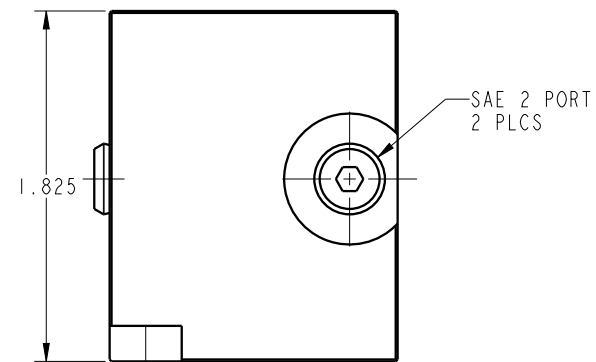
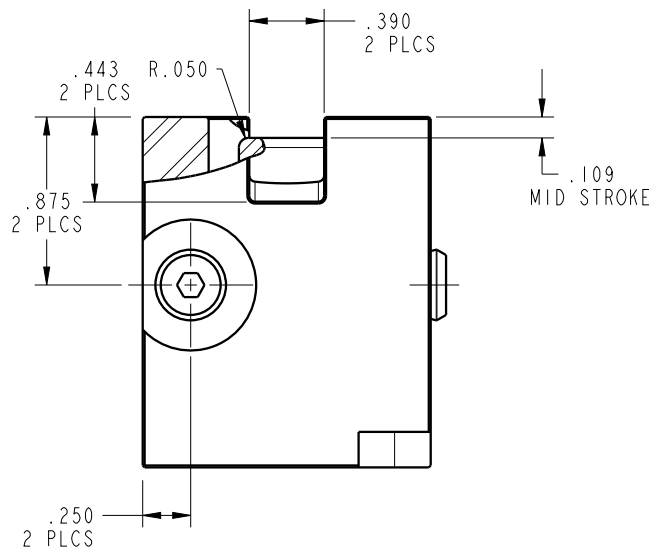


ILC20110901 REV B ECN 4055



CAD CONTROL DRAWING			
		VEKTEK, INC. 1334 E. SIXTH AVE. P.O. BOX 625 EMPORIA, KS. 66801 U.S.A.	

B	4055	RELEASE	MJUST	1/28/20	20110901	A	CYL, BB, PULL, 2000LB
REV	IN ACCORDANCE WITH ECN	EFFECTIVE DATE	REVISED BY	DATE	REFERENCE MODEL	REF REV	1/4-20 THREAD
DRW BY:	MJUST	DRAWING STATUS: Released			TOLERANCES DO NOT APPLY DIMENSIONS ARE NOMINAL		SIZE B
DATE:	7/24/18	PRODUCTION APPROVED FOR RELEASED STATUS ONLY			ILC20110901		REV B

FORM FEG036, Rev. B

SHEET 1 OF 1