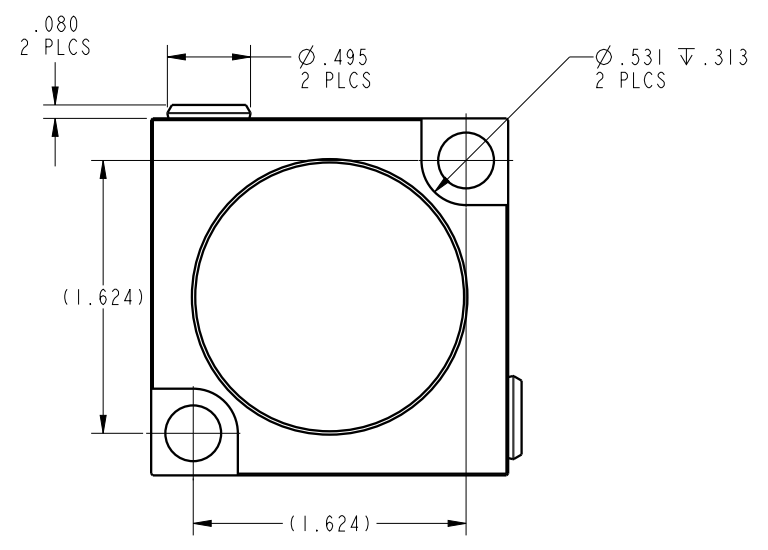
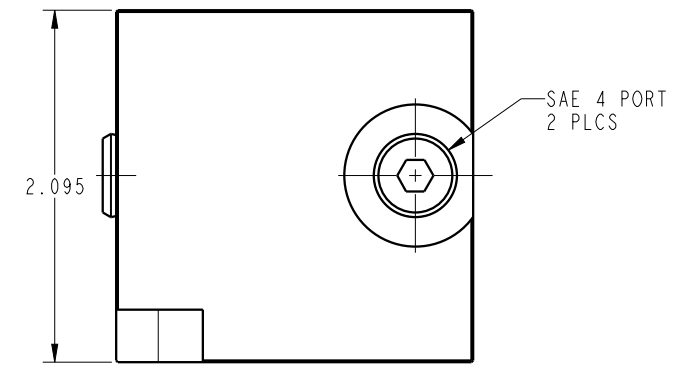
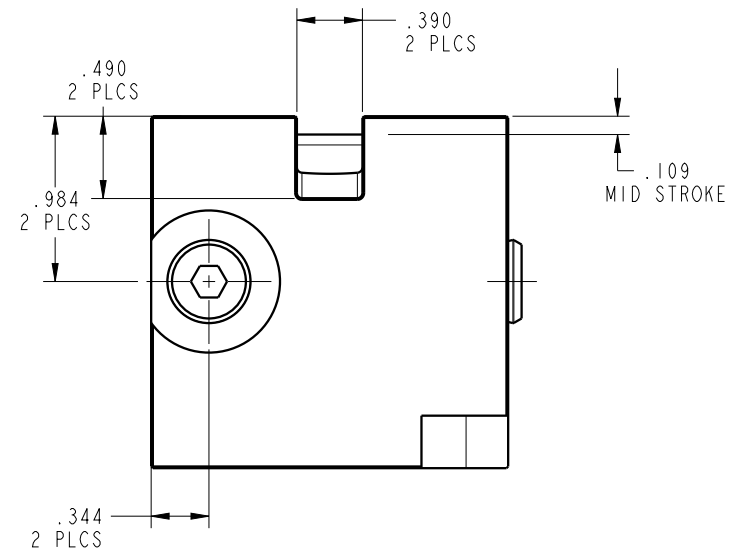


ILC20111301 REV A ECN 3539



CAD CONTROL DRAWING			
		VEKTEK, INC. 1334 E. SIXTH AVE. P.O. BOX 625 EMPORIA, KS. 66801 U.S.A.	
A	3539	RELEASE	MJUST
REV	IN ACCORDANCE WITH ECN	EFFECTIVE DATE	REVISED BY
DATE: 7/24/18	DRAWING STATUS: Released		7/30/18
		PRODUCTION APPROVED FOR RELEASED STATUS ONLY	DATE
		TOLERANCES DO NOT APPLY	20111301
		DIMENSIONS ARE NOMINAL	A
SIZE	B	ILC20111301	REV A
		FORM FEG036, Rev. B	