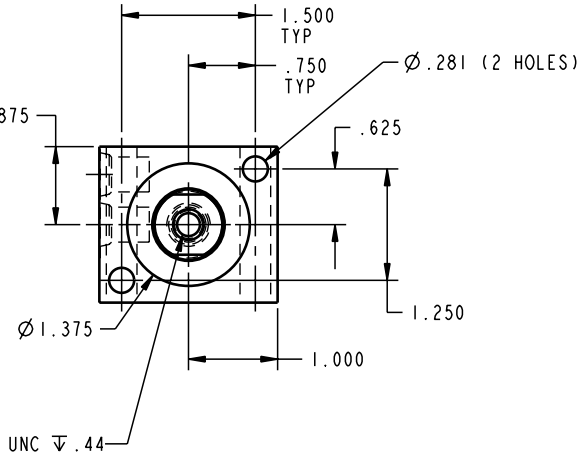
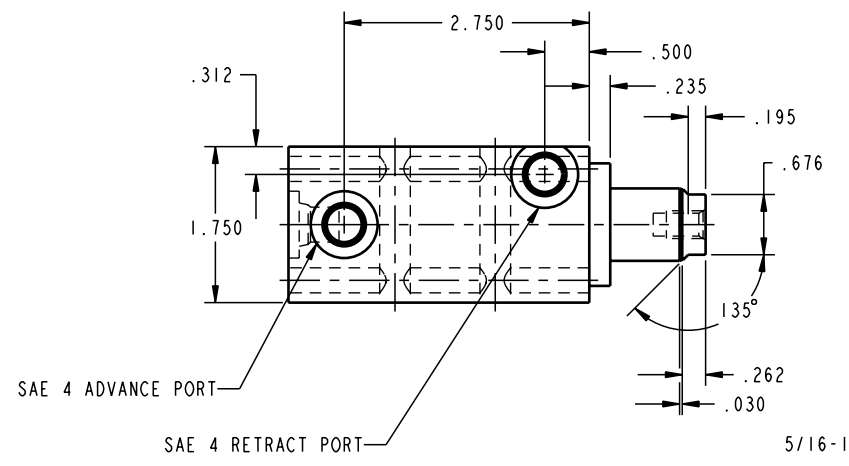
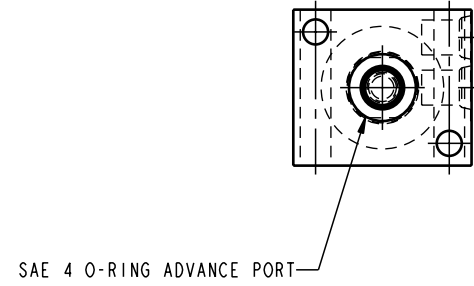


ILC20121004 REV A ECN 642
SCALE 1.000



CAD CONTROL
DRAWING



VEKTEK, INC.
1334 E. SIXTH AVE. P.O. BOX 625
EMPORIA, KS. 66801 U.S.A.

| | | | | | | | |
|---------|------------------------|--|------------|----------|-------------------------|---------|-----------------------------|
| A | 642 | RELEASE | K. ROEMER | 04-01-05 | 20121004 | E | CYL, BB, DA, 3900, 1.5 STRK |
| REV | IN ACCORDANCE WITH ECN | EFFECTIVE DATE | REVISED BY | DATE | REFERENCE MODEL | REF REV | |
| DRW BY: | K. ROEMER | DRAWING STATUS: Released | | | TOLERANCES DO NOT APPLY | | SIZE |
| DATE: | 04-03-02 | PRODUCTION APPROVED FOR RELEASED STATUS ONLY | | | DIMENSIONS ARE NOMINAL | | D ILC20121004 REV A |

FORM FEG036, Rev. A