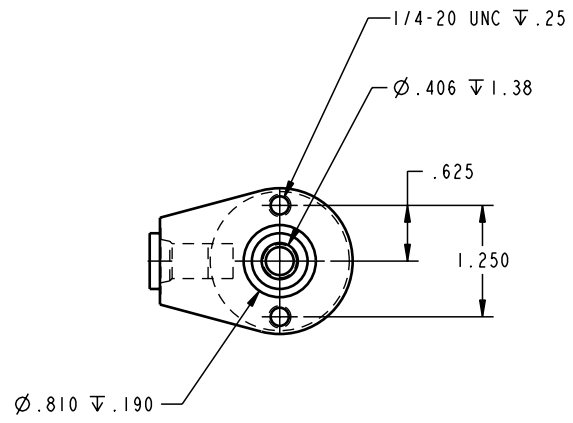
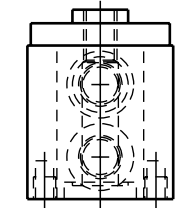
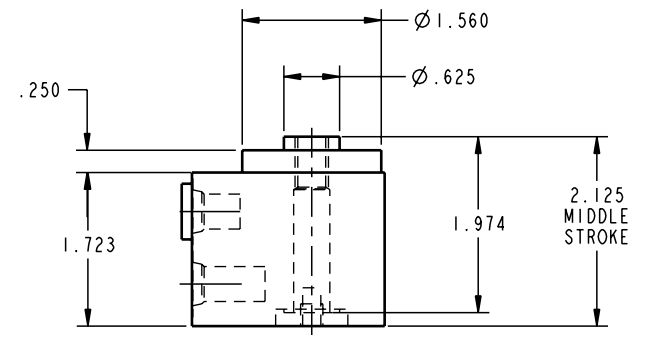
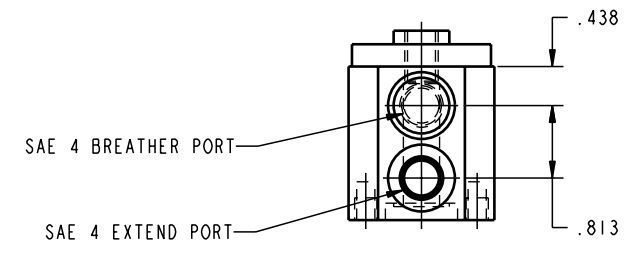


SCALE 1.000
 ILC20211303 REV A ECN 648



CAD CONTROL
 DRAWING



VEKTEK, INC.
 1334 E. SIXTH AVE. P.O. BOX 625
 EMPORIA, KS. 66801 U.S.A.

REV	648	RELEASE	K. ROEMER	04-07-05	20211303	H	CYL, HR, SA, 4600 .25 STK
REV	IN ACCORDANCE WITH ECN	EFFECTIVE DATE	REVISED BY	DATE	REFERENCE MODEL	REF REV	
DRW BY:	K. ROEMER				TOLERANCES DO NOT APPLY		SIZE
DATE:	06-07-02				DIMENSIONS ARE NOMINAL		D

DRAWING STATUS: **Released**
 PRODUCTION APPROVED FOR RELEASED STATUS ONLY

ILC20211303 REV A

FORM FEG036, Rev. A