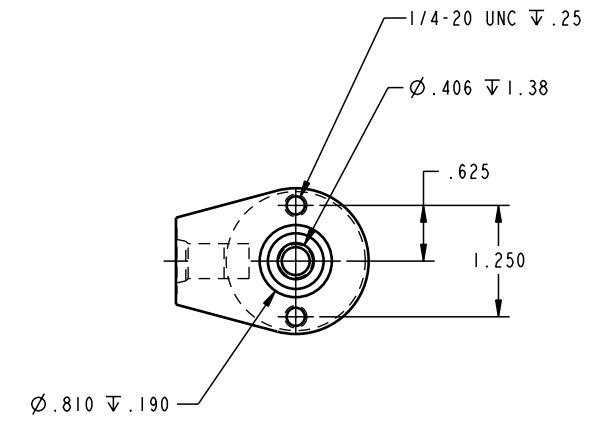
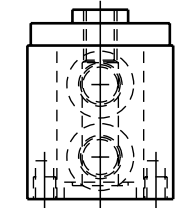
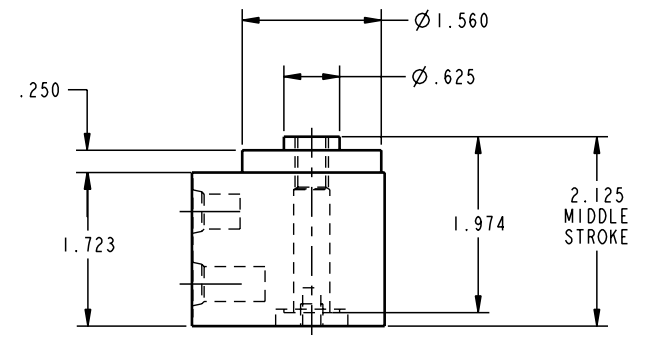
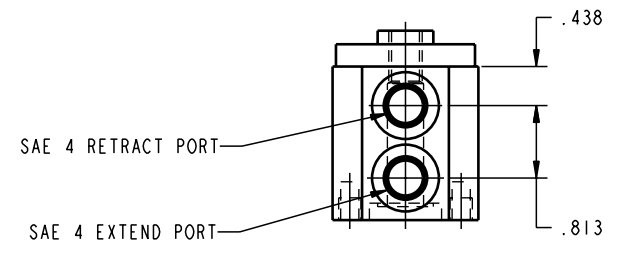


SCALE 1.000
 ILC20221303 REV A ECN 648



CAD CONTROL
 DRAWING



VEKTEK, INC.
 1334 E. SIXTH AVE. P.O. BOX 625
 EMPORIA, KS. 66801 U.S.A.

REV	648	RELEASE	K. ROEMER	04-07-05	20221303	H	CYL, HR, DA, 4600 .25 STK
REV	IN ACCORDANCE WITH ECN	EFFECTIVE DATE	REVISED BY	DATE	REFERENCE MODEL	REF REV	
DRW BY:	K. ROEMER			DRAWING STATUS: Released			
DATE:	06-07-02			PRODUCTION APPROVED FOR RELEASED STATUS ONLY			

TOLERANCES DO NOT APPLY
 DIMENSIONS ARE NOMINAL

SIZE D ILC20221303 REV A

FORM FEG036, Rev. A