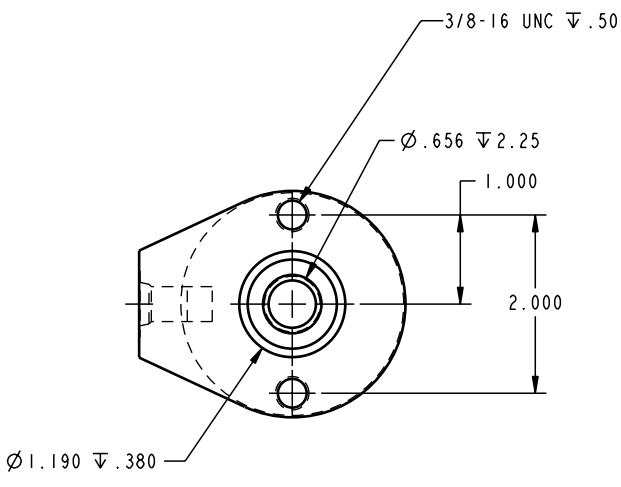
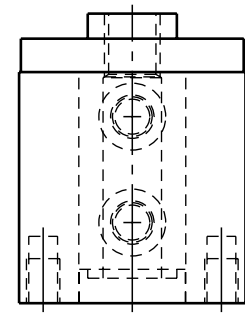
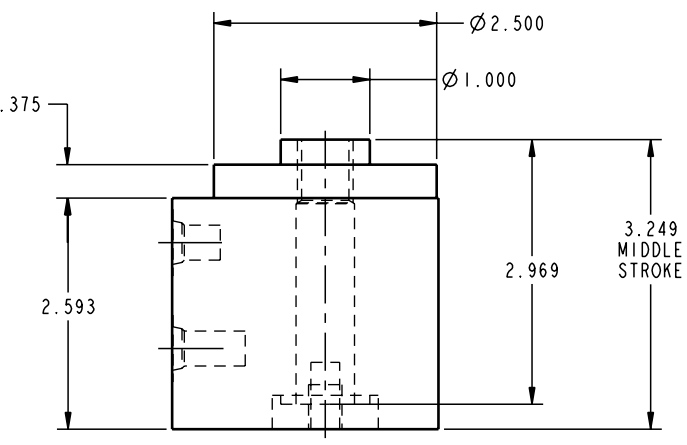
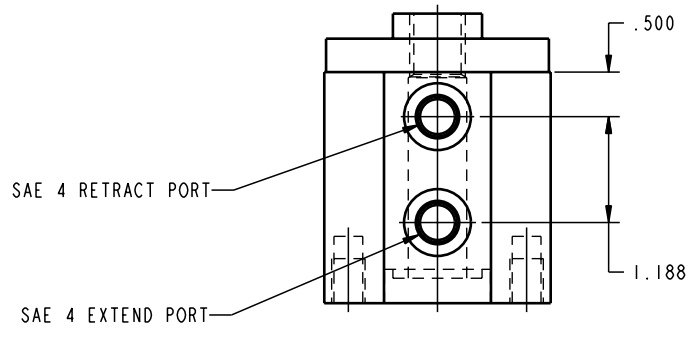


SCALE 1.000
ILC20222005 REV A ECN 648



CAD CONTROL
DRAWING



VEKTEK, INC.
1334 E. SIXTH AVE. P.O. BOX 625
EMPORIA, KS. 66801 U.S.A.

REV	648	RELEASE	K. ROEMER	04-07-05	20222005	H	CYL, HR, DA, 11700 .50 STK
REV	IN ACCORDANCE WITH ECN		EFFECTIVE DATE	REVISED BY	DATE	REFERENCE MODEL	REF REV
DRW BY:	K. ROEMER		DRAWING STATUS: Released		TOLERANCES DO NOT APPLY		SIZE D
DATE:	06-07-02		PRODUCTION APPROVED FOR RELEASED STATUS ONLY		DIMENSIONS ARE NOMINAL		ILC20222005 REV A

FORM FEG036, Rev. A