

1

2

3

4

D

D

C

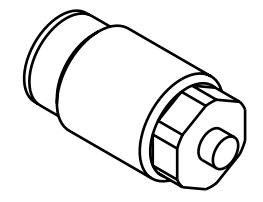
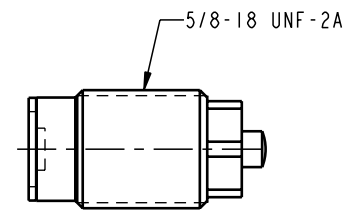
C

B

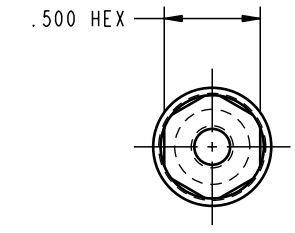
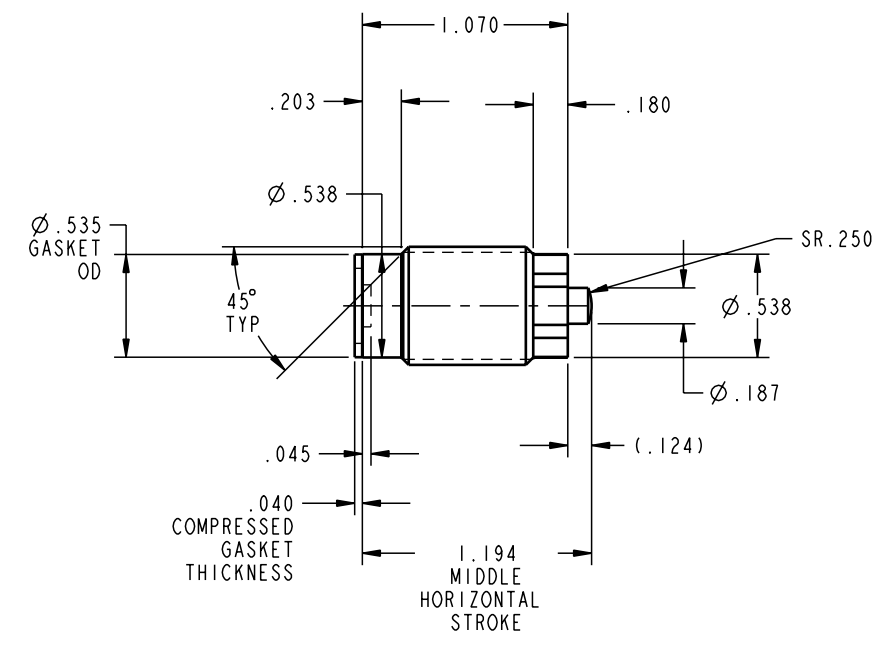
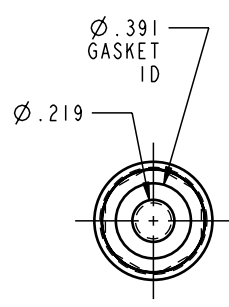
B

A

A



ILC21010402 REV A ECN 1297

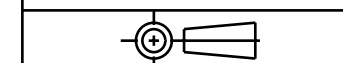


CAD CONTROL DRAWING



VEKTEK, INC.
1334 E. SIXTH AVE. P.O. BOX 625
EMPORIA, KS. 66801 U.S.A.

A	1297	RELEASE	K. ROEMER	04-22-05	21010402	L	CYL, MINI, CM, 550, .19 STRK
REV	IN ACCORDANCE WITH ECN	EFFECTIVE DATE	REVISED BY	DATE	REFERENCE MODEL	REF REV	
DRW BY:	K. ROEMER	DRAWING STATUS: Released			TOLERANCES DO NOT APPLY DIMENSIONS ARE NOMINAL		SIZE B
DATE:	04-22-05	PRODUCTION APPROVED FOR RELEASED STATUS ONLY					ILC21010402 REV A



FORM FE036, Rev. A

SHEET 1 OF 1