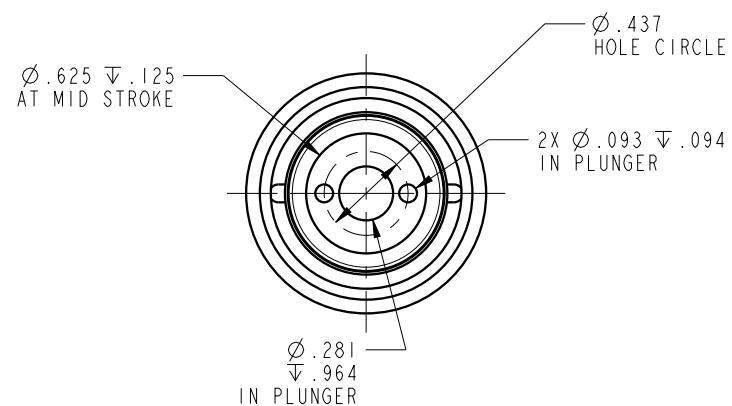
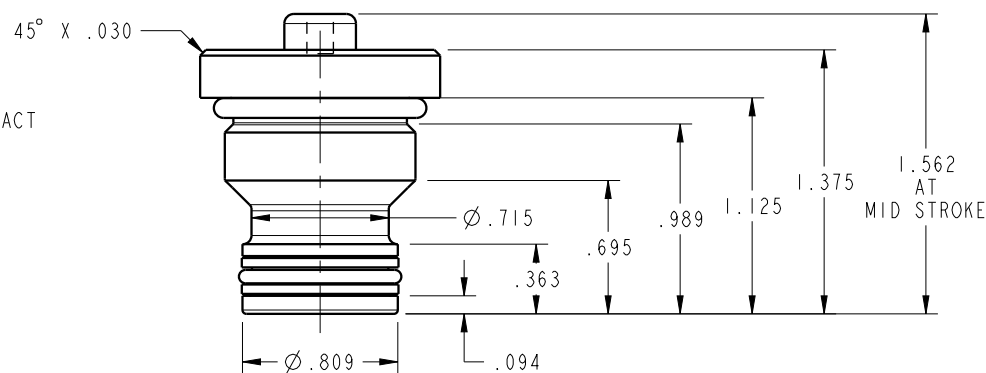
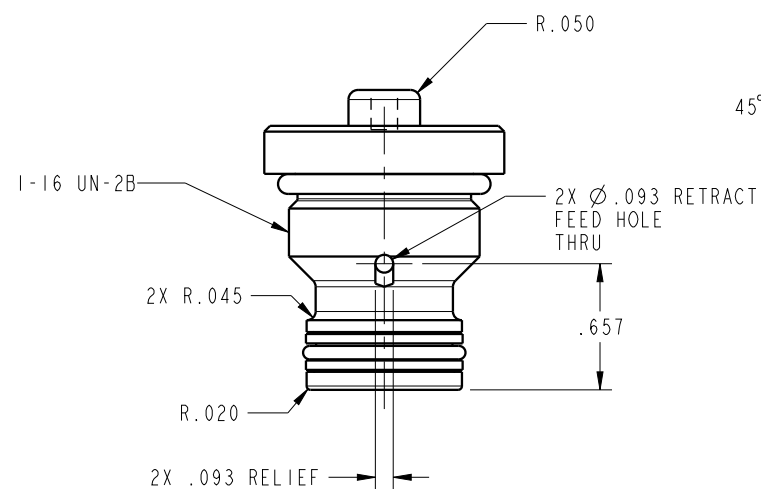


ILC21020600 REV C ECN 4055



NOTE: RETURN SPRING INCLUDED WITH CYLINDER.
SPRING OMITTED FOR CLARITY

CAD CONTROL DRAWING			
		VEKTEK, INC. 1334 E. SIXTH AVE. P.O. BOX 625 EMPORIA, KS. 66801 U.S.A.	

REV	C 4055	RELEASE	MJUST	1/28/20	21020600	B	CYL, CM, PP, 1500LB
REV	IN ACCORDANCE WITH ECN	EFFECTIVE DATE	REVISED BY	DATE	REFERENCE MODEL	REF REV	6-32 THREAD
DRW BY:	DKC	DRAWING STATUS: Released			TOLERANCES DO NOT APPLY DIMENSIONS ARE NOMINAL		SIZE B
DATE:	8/25/14	PRODUCTION APPROVED FOR RELEASED STATUS ONLY					ILC21020600 REV C

FORM FEG036, Rev. B

SHEET 1 OF 1