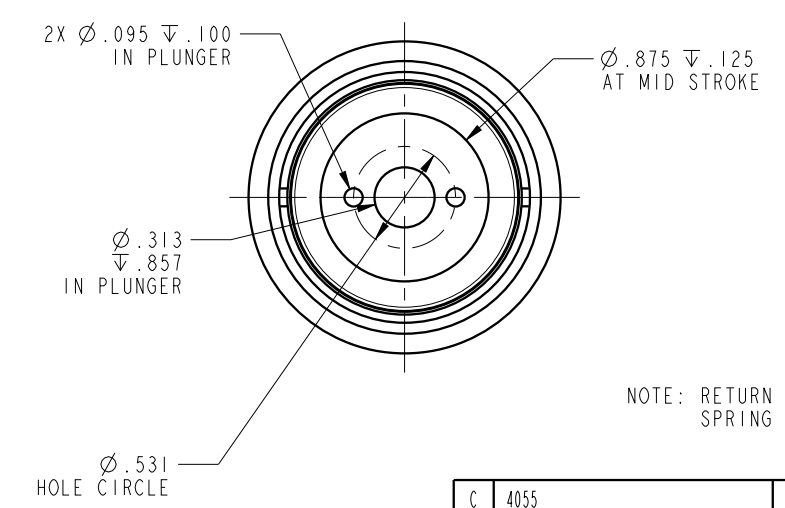
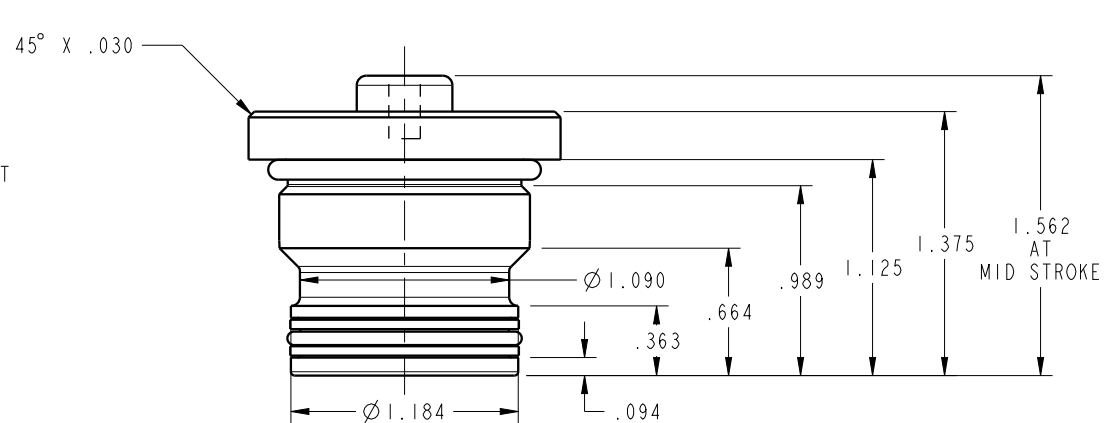
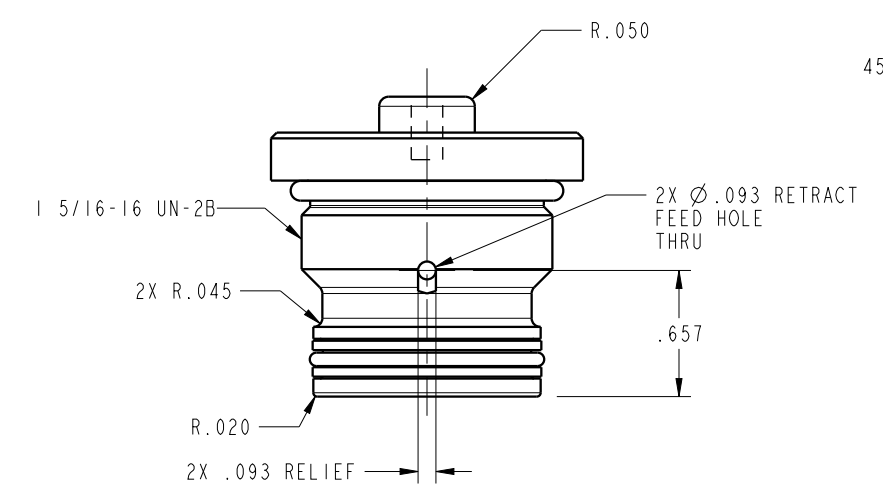


ILC21020900 REV C ECN 4055



NOTE: RETURN SPRING INCLUDED WITH CYLINDER.  
SPRING OMITTED FOR CLARITY

<b>CAD CONTROL DRAWING</b>			
		VEKTEK, INC. 1334 E. SIXTH AVE. P.O. BOX 625 EMPORIA, KS. 66801 U.S.A.	

C	4055	RELEASE	MJUST	1/28/20	21020900	B	CYL, CM, PP, 2900LB
REV	IN ACCORDANCE WITH ECN	EFFECTIVE DATE	REVISED BY	DATE	REFERENCE MODEL	REF REV	8-32 THREAD
DRW BY:	DKC	<b>DRAWING STATUS: Released</b>			TOLERANCES DO NOT APPLY DIMENSIONS ARE NOMINAL		SIZE B
DATE:	8/25/14	PRODUCTION APPROVED FOR RELEASED STATUS ONLY					ILC21020900 REV C

FORM FEG036, Rev. B