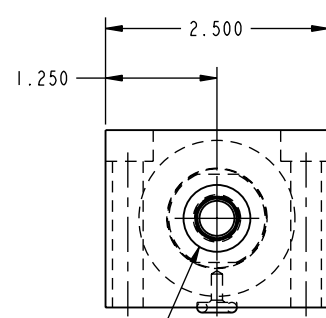
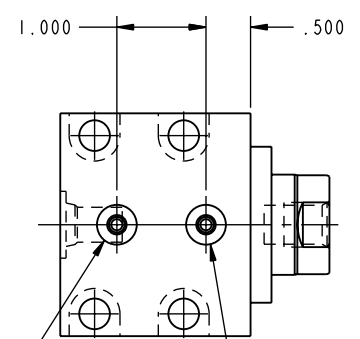
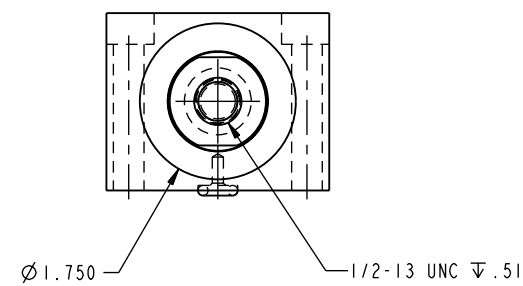
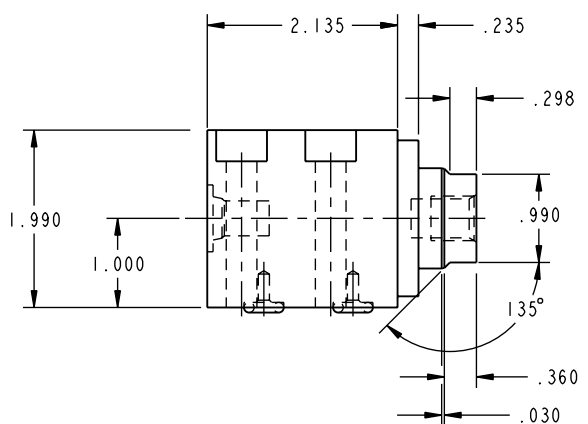


1LC21111500 REV C ECN 1873
SCALE 1.000



SAE 4 EXTEND PORT
WITH .065 ▽ SPOTFACE



O-RING EXTEND PORT O-RING BREATHER PORT

CAD CONTROL
DRAWING



VEKTEK, INC.
1334 E. SIXTH AVE. P.O. BOX 625
EMPORIA, KS. 66801 U.S.A.

C	1873	RELEASE	GLR	03/12/08	21111500	D	CYL, BB, MM, SA, 8800, .5 STRK
REV	IN ACCORDANCE WITH ECN	EFFECTIVE DATE	REVISED BY	DATE	REFERENCE MODEL	REF REV	''''
DRW BY:	K. ROEMER	DRAWING STATUS: Released			TOLERANCES DO NOT APPLY		SIZE
DATE:	04-01-02	PRODUCTION APPROVED FOR RELEASED STATUS ONLY			DIMENSIONS ARE NOMINAL		D

1LC21111500 REV C

FORM FEG036, Rev. A

SHEET 1 OF 1