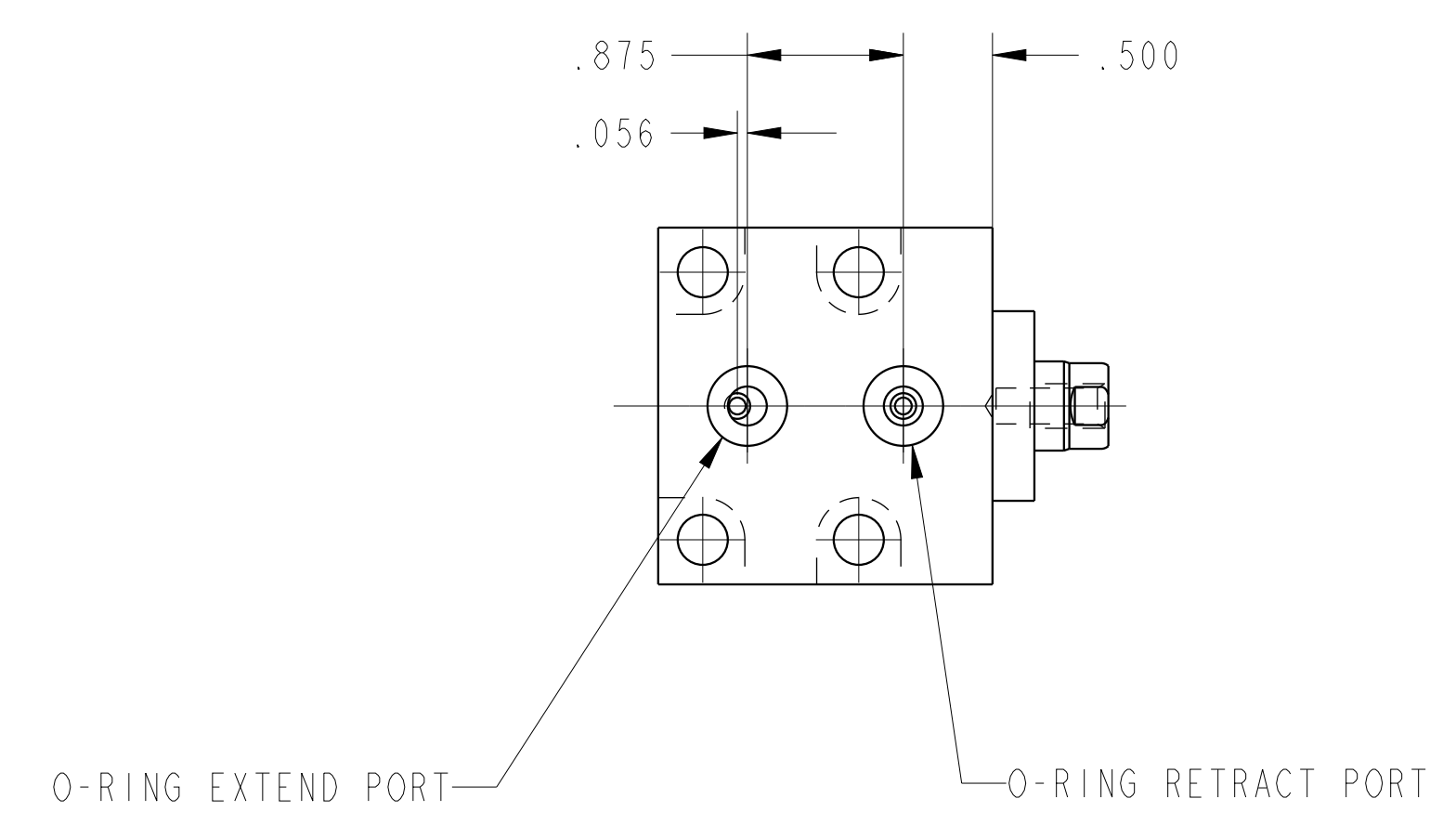
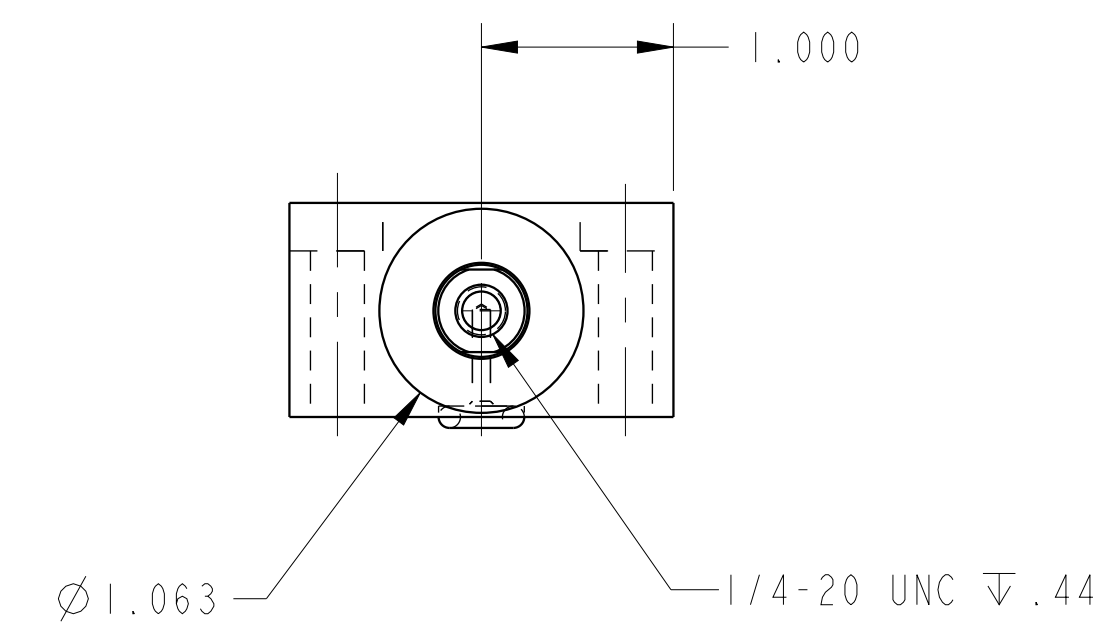
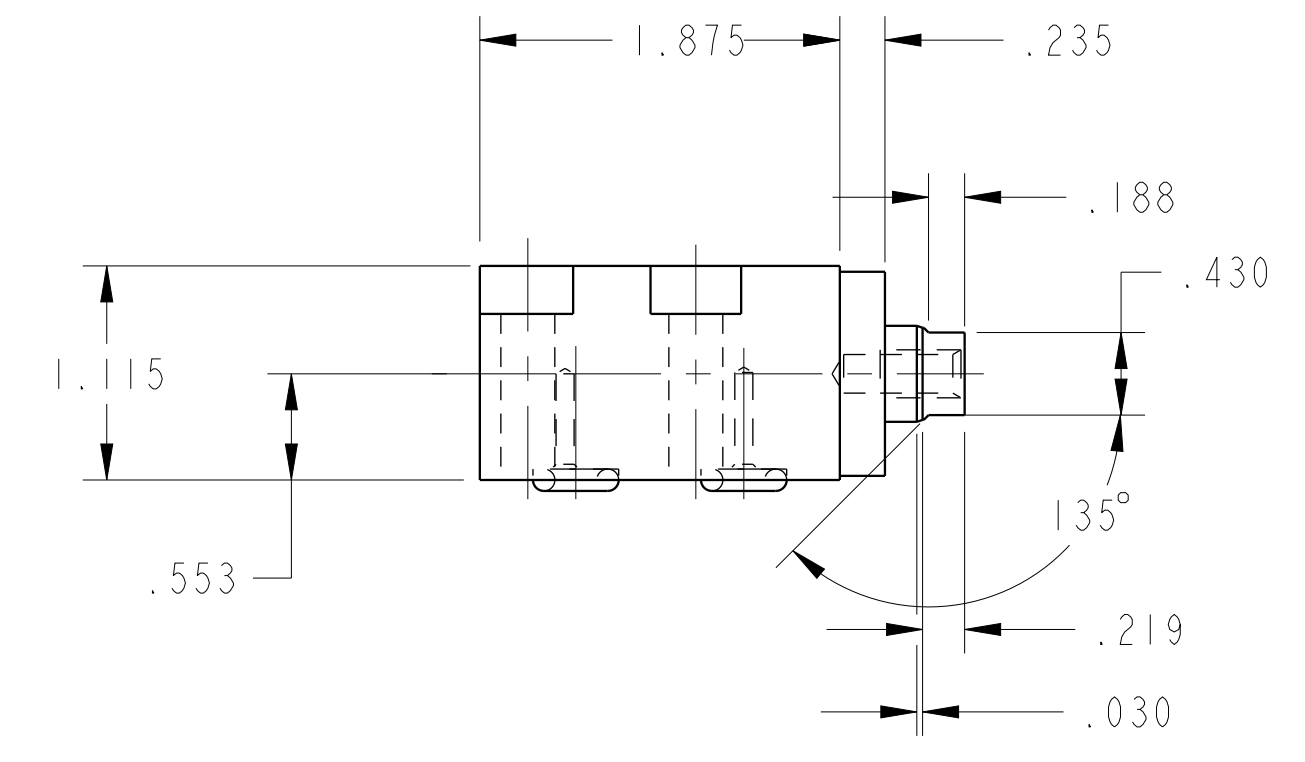
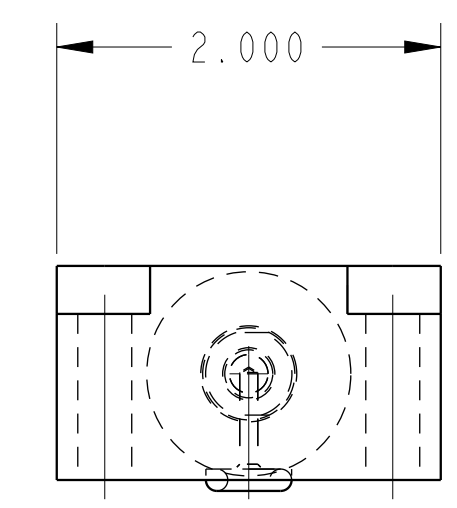

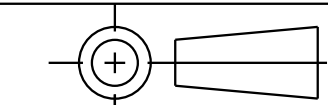


ILC21120800 REV D ECN 2939  
SCALE 1.000



|                        |   |  |
|------------------------|---|--|
| CAD CONTROL<br>DRAWING | <br>VEKTEK, INC.<br>1334 E. SIXTH AVE. P.O. BOX 625<br>EMPORIA, KS. 66801 U.S.A. |  |
|                        |    |  |

|         |  |                |            |          |
|---------|--|----------------|------------|----------|
| D       | 2939   | RELEASE        | KR         | 11/10/15 |
| REV     | IN ACCORDANCE WITH ECN                       | EFFECTIVE DATE | REVISED BY | DATE     |
| DRW BY: | DRAWING STATUS: <b>Released</b>              |                |            |          |
| DATE:   | PRODUCTION APPROVED FOR RELEASED STATUS ONLY |                |            |          |

|   |         |                                 |
|---|---------|---------------------------------|
| 21120800  | C       | CYL, BB, MM, 2200, .25 STRK, DA |
| REFERENCE MODEL                                   | REF REV | SIZE D                          |
| TOLERANCES DO NOT APPLY<br>DIMENSIONS ARE NOMINAL |         | ILC21120800 REV D               |