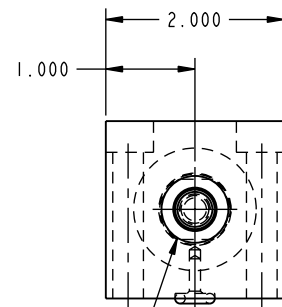
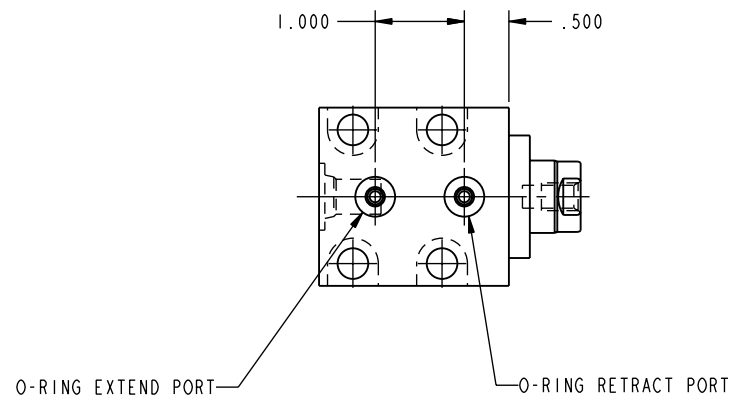
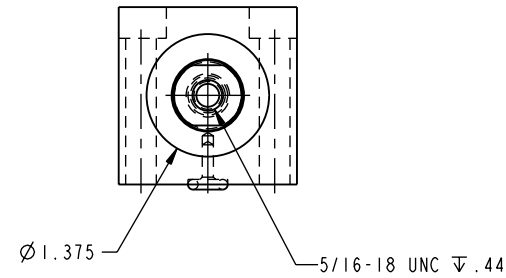
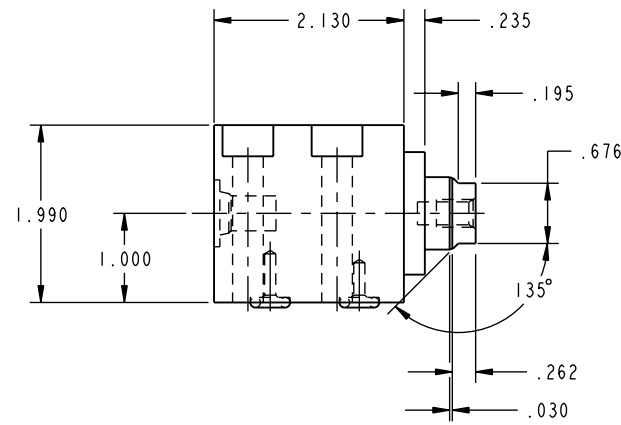


ILC21121000 REV C ECN 1873
SCALE 1.000



SAE 4 EXTEND PORT
WITH .065 ⓪ SPOTFACE



CAD CONTROL
DRAWING



VEKTEK, INC.
1334 E. SIXTH AVE. P.O. BOX 625
EMPORIA, KS. 66801 U.S.A.

REV	1873	RELEASE	GLR	03/12/08	21121000	D	CYL, BB, MM, DA, 3900, .5 STRK
IN ACCORDANCE WITH	ECN	EFFECTIVE DATE	REVISED BY	DATE	REFERENCE MODEL	REF REV	''''
DRW BY: K. ROEMER	DRAWING STATUS: Released				TOLERANCES DO NOT APPLY		SIZE
DATE: 04-01-02	PRODUCTION APPROVED FOR RELEASED STATUS ONLY				DIMENSIONS ARE NOMINAL		D ILC21121000 REV C

FORM FEG036, Rev. A

SHEET 1 OF 1