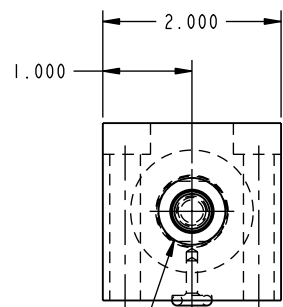
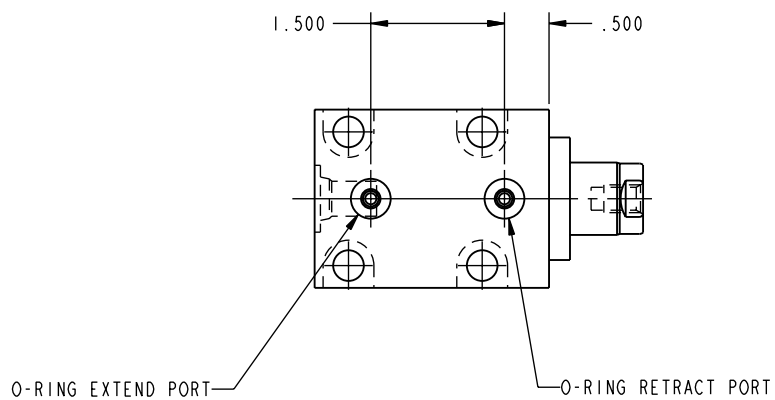
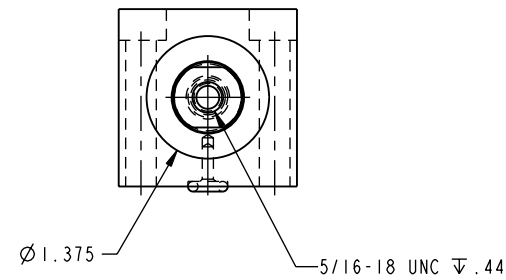
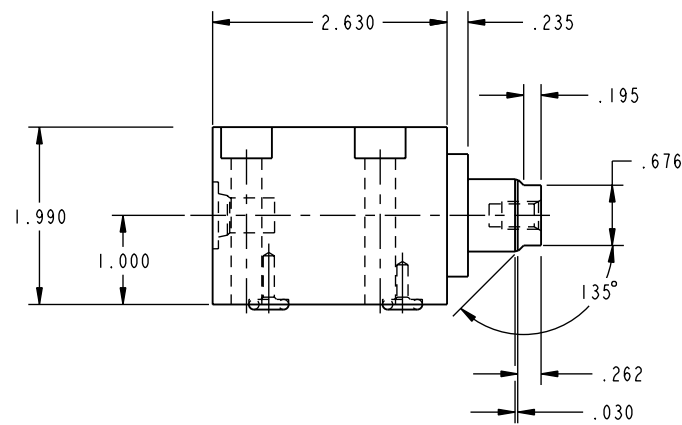


ILC21121001 REV C ECN 1873  
 SCALE 1.000



SAE 4 EXTEND PORT WITH .065  $\nabla$  SPOTFACE



CAD CONTROL DRAWING



VEKTEK, INC.  
 1334 E. SIXTH AVE. P.O. BOX 625  
 EMPORIA, KS. 66801 U.S.A.

REV	1873	RELEASE	GLR	03/12/08	21121001	D	CYL, BB, MM, DA, 3900, 1.0 STRK
REV	IN ACCORDANCE WITH ECN	EFFECTIVE DATE	REVISED BY	DATE	REFERENCE MODEL	REF REV	''''
DRW BY:	K. ROEMER	DRAWING STATUS: <b>Released</b>			TOLERANCES DO NOT APPLY		SIZE
DATE:	04-01-02	PRODUCTION APPROVED FOR RELEASED STATUS ONLY			DIMENSIONS ARE NOMINAL		D ILC21121001 REV C

FORM FEG036, Rev. A

SHEET 1 OF 1