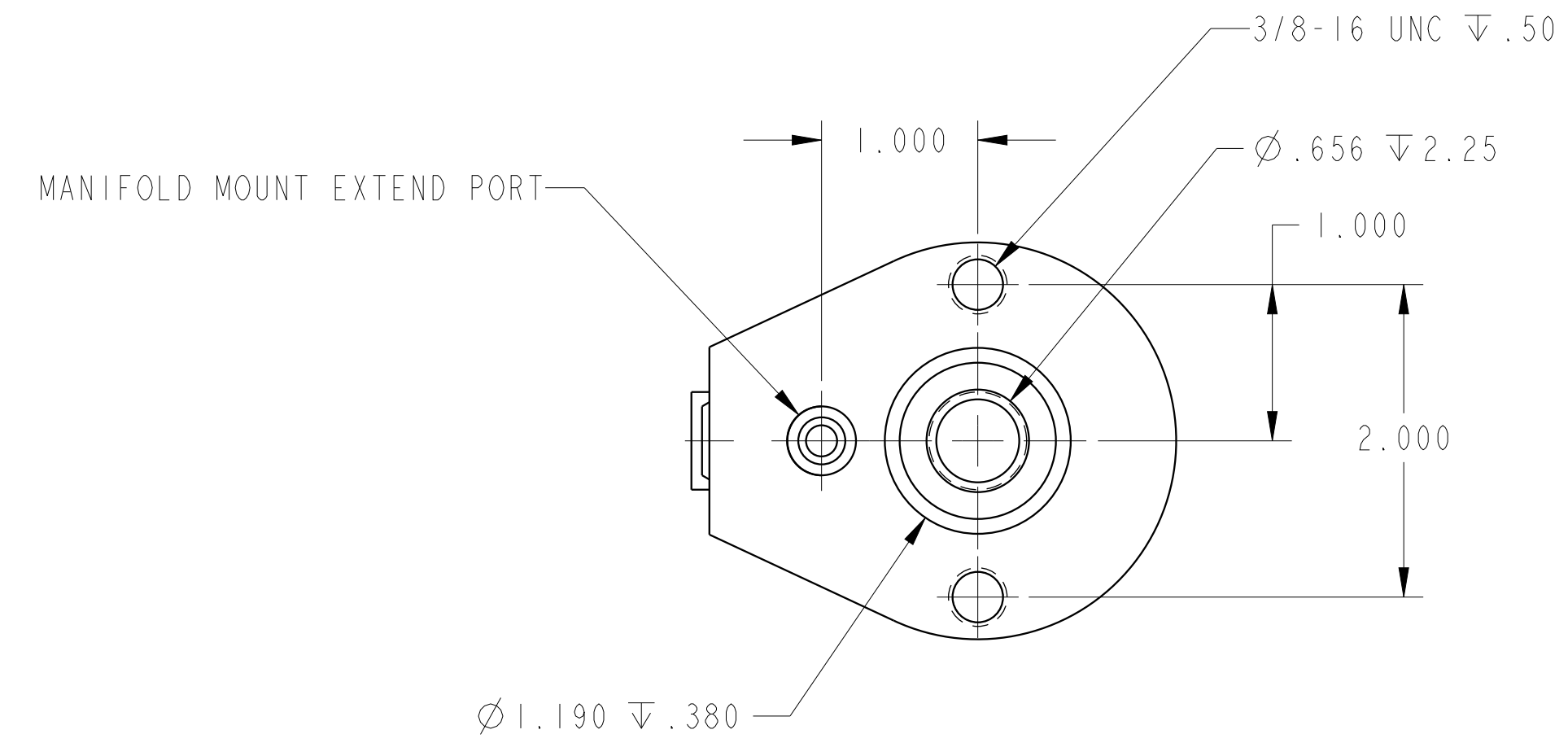
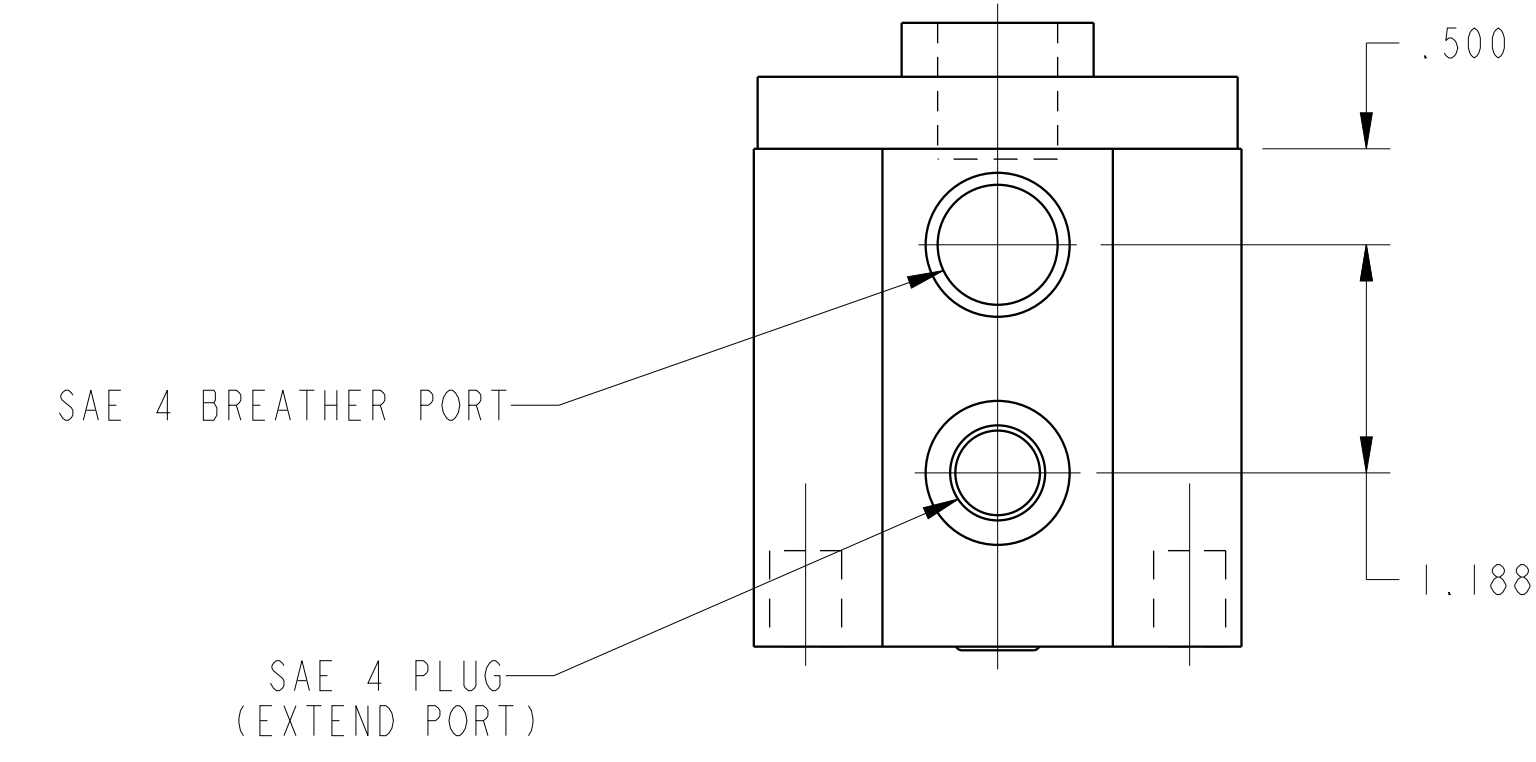
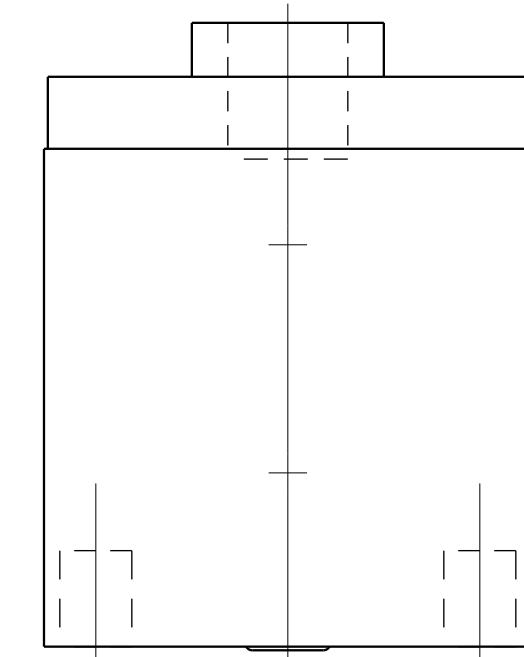
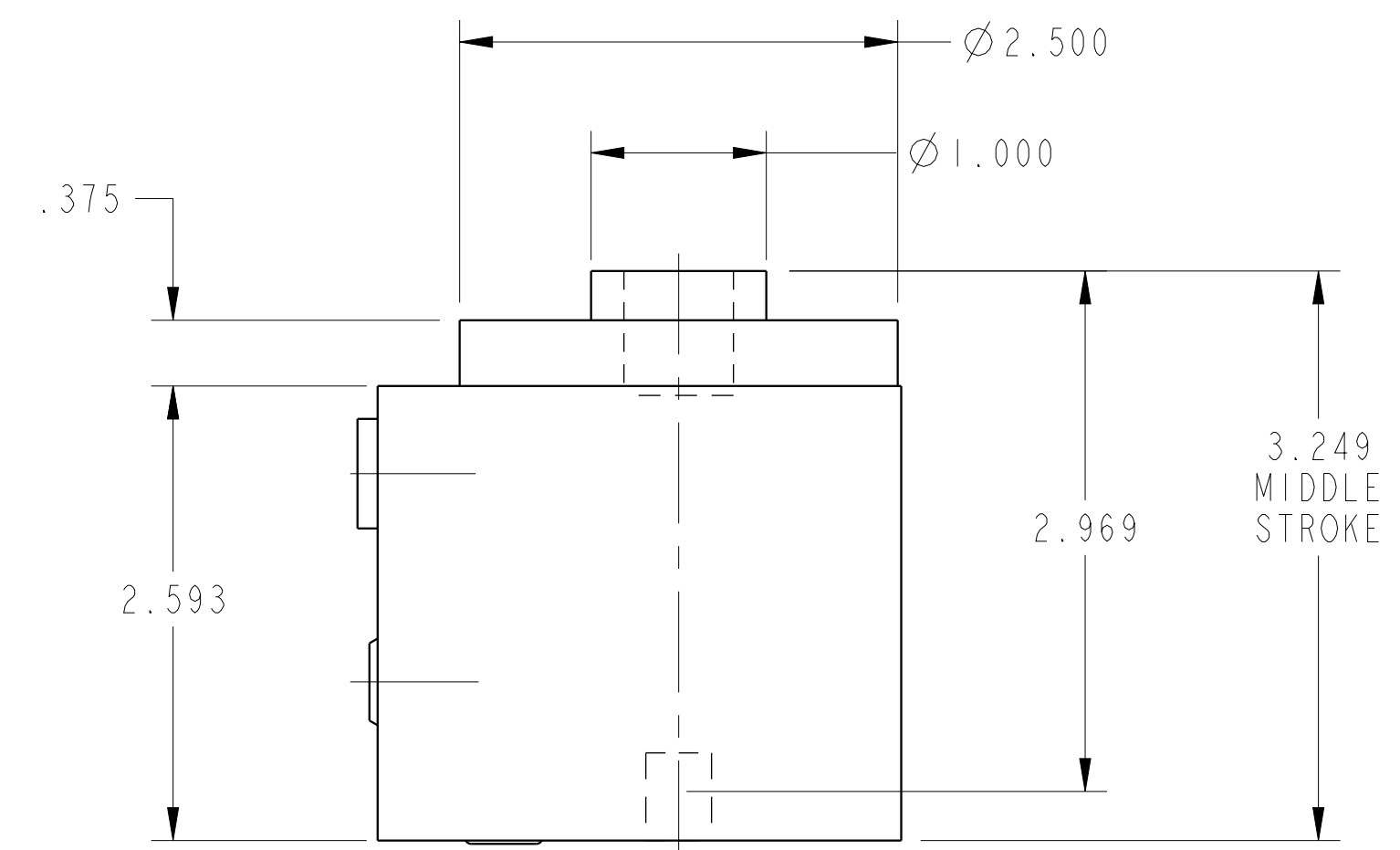


SCALE 1.000
 ILC21212005 REV A ECN 3148



CAD CONTROL DRAWING		
	VEKTEK, INC. 1334 E. SIXTH AVE. P.O. BOX 625 EMPORIA, KS. 66801 U.S.A.	

A	3148	RELEASE	GAR	2/22/17	21212005	A	CYL, HR, SA, 11700, MM, .50 STK
REV	IN ACCORDANCE WITH ECN	EFFECTIVE DATE	REVISED BY	DATE	REFERENCE MODEL	REF REV	---
DRW BY: GAR DATE: 2/23/17		DRAWING STATUS: Released PRODUCTION APPROVED FOR RELEASED STATUS ONLY			TOLERANCES DO NOT APPLY DIMENSIONS ARE NOMINAL		SIZE D ILC21212005 REV A