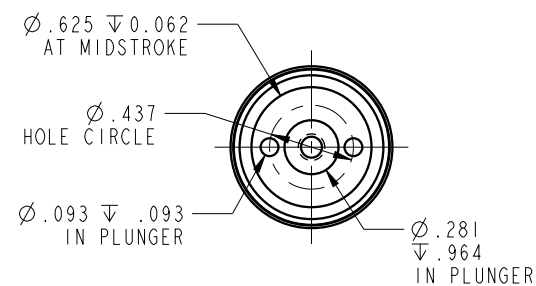
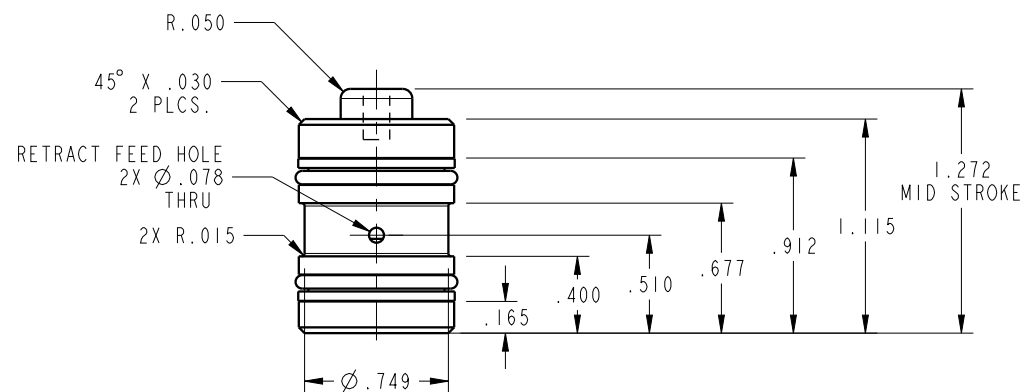


ILC21410600 REV B ECN 4055



NOTE: RETURN SPRING INCLUDED WITH CYLINDER.  
 SPRING OMITTED FOR CLARITY

CAD CONTROL  
 DRAWING



VEKTEK, INC.  
 1334 E. SIXTH AVE. P.O. BOX 625  
 EMPORIA, KS. 66801 U.S.A.

|               |  |                |            |         |                         |           |                      |
|---------------|--|----------------|------------|---------|-------------------------|-----------|----------------------|
| B             | 4055   | RELEASE        | MJUST      | 1/28/20 | 21410600                | B         | CYL, CM, PULL, 980LB |
| REV           | IN ACCORDANCE WITH ECN                       | EFFECTIVE DATE | REVISED BY | DATE    | REFERENCE MODEL         | REF REV   | 6-32 THREAD          |
| DRW BY: DKC   | DRAWING STATUS: <b>Released</b>              |                |            |         | TOLERANCES DO NOT APPLY | UNITS     | SIZE                 |
| DATE: 8/21/14 | PRODUCTION APPROVED FOR RELEASED STATUS ONLY |                |            |         | DIMENSIONS ARE NOMINAL  | mm [inch] | B                    |
|               |  |                |            |         |                         |           | ILC21410600          |
|               |  |                |            |         |                         |           | FORM FEG036, Rev. C  |

SHEET 1 OF 1