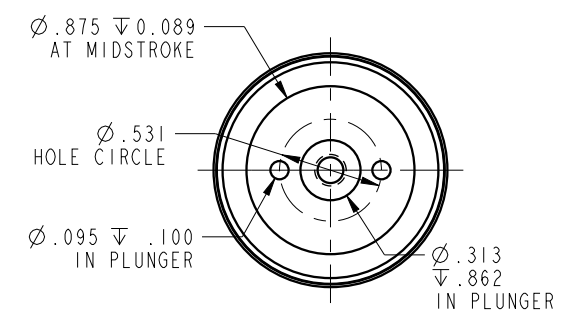
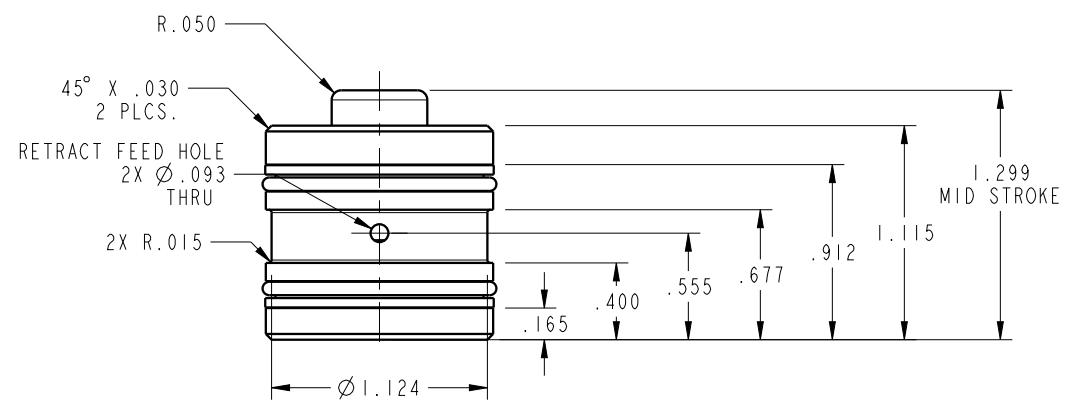


ILC21410900 REV B ECN 4055



NOTE: RETURN SPRING INCLUDED WITH CYLINDER.  
 SPRING OMITTED FOR CLARITY

<b>CAD CONTROL DRAWING</b>			
		VEKTEK, INC. 1334 E. SIXTH AVE. P.O. BOX 625 EMPORIA, KS. 66801 U.S.A.	

B	4055	RELEASE	MJUST	1/28/20	21410900	B	CYL, CM, PULL, 2000LB
REV	IN ACCORDANCE WITH ECN	EFFECTIVE DATE	REVISED BY	DATE	REFERENCE MODEL	REF REV	8-32 THREAD
DRW BY:	DKC	<b>DRAWING STATUS: Released</b>			TOLERANCES DO NOT APPLY	UNITS	SIZE
DATE:	8/21/14	PRODUCTION APPROVED FOR RELEASED STATUS ONLY			DIMENSIONS ARE NOMINAL	mm [inch]	B
					FORM FEG036, Rev. C	REV B	ILC21410900