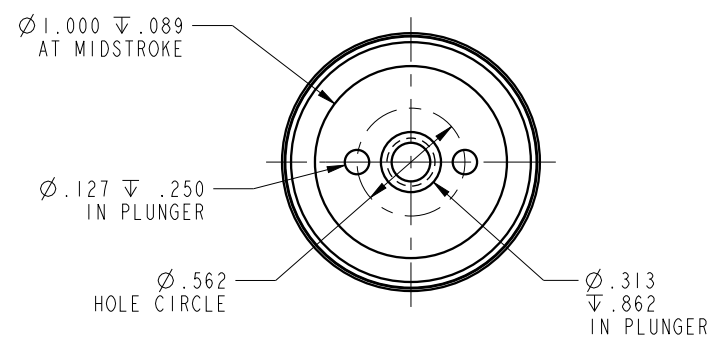
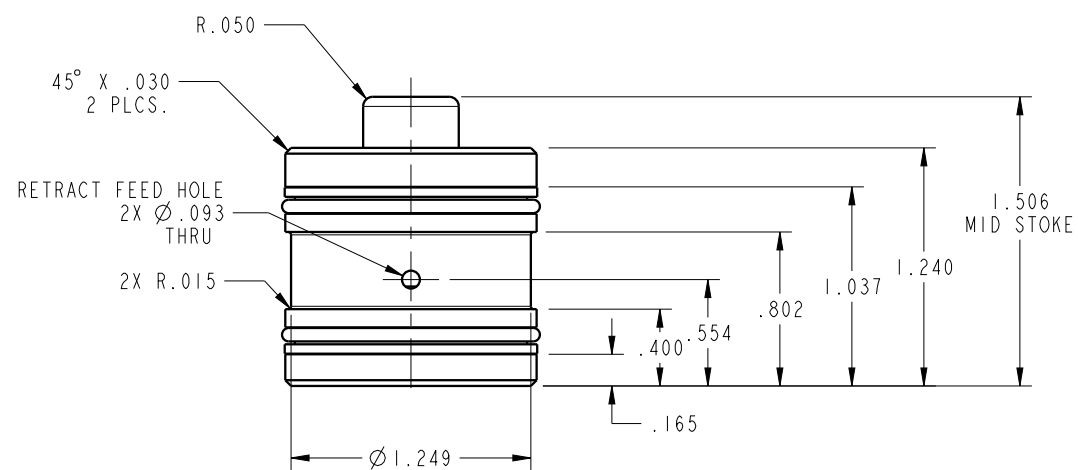


ILC21411100 REV B ECN 4055



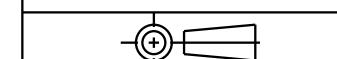
NOTE: RETURN SPRING INCLUDED WITH CYLINDER.  
 SPRING OMITTED FOR CLARITY

CAD CONTROL  
 DRAWING



VEKTEK, INC.  
 1334 E. SIXTH AVE. P.O. BOX 625  
 EMPORIA, KS. 66801 U.S.A.

B	4055	RELEASE	MJUST	1/28/20
REV	IN ACCORDANCE WITH ECN	EFFECTIVE DATE	REVISED BY	DATE
DRW BY:	DRAWING STATUS: <b>Released</b>			
DATE:	PRODUCTION APPROVED FOR RELEASED STATUS ONLY			



21411100	B	CYL, CM, PULL, 2950LB
REFERENCE MODEL	REF REV	1/4-20 THREAD
TOLERANCES DO NOT APPLY DIMENSIONS ARE NOMINAL		SIZE B

ILC21411100	REV B
-------------	-------

FORM FEG036, Rev. B

SHEET 1 OF 1