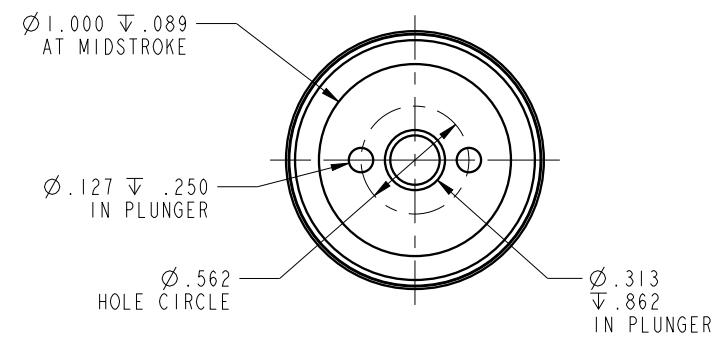
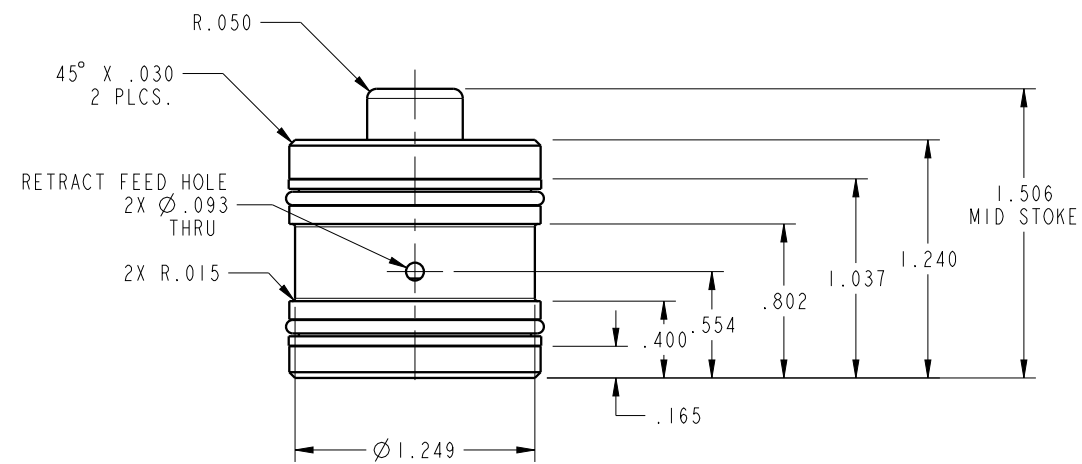


ILC21411101 REV B ECN 4055



NOTE: RETURN SPRING INCLUDED WITH CYLINDER.  
 SPRING OMITTED FOR CLARITY

<b>CAD CONTROL DRAWING</b>		 VEKTEK, INC. 1334 E. SIXTH AVE. P.O. BOX 625 EMPORIA, KS. 66801 U.S.A.	

B	4055	RELEASE	MJUST	1/28/20	21411101	B	CYL, CM, PULL, 2950LB
REV	IN ACCORDANCE WITH ECN	EFFECTIVE DATE	REVISED BY	DATE	REFERENCE MODEL	REF REV	5/16-18 THREAD
DRW BY: DKC	<b>DRAWING STATUS: Released</b> PRODUCTION APPROVED FOR RELEASED STATUS ONLY				TOLERANCES DO NOT APPLY DIMENSIONS ARE NOMINAL		SIZE B ILC21411101 REV B
DATE: 8/21/14					FORM FEG036, Rev. B		

SHEET 1 OF 1