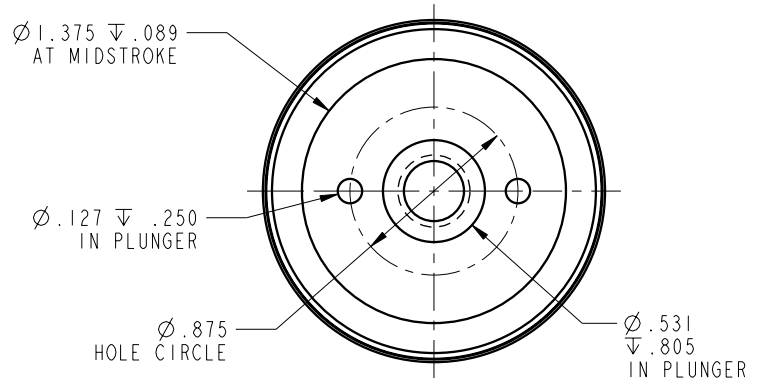
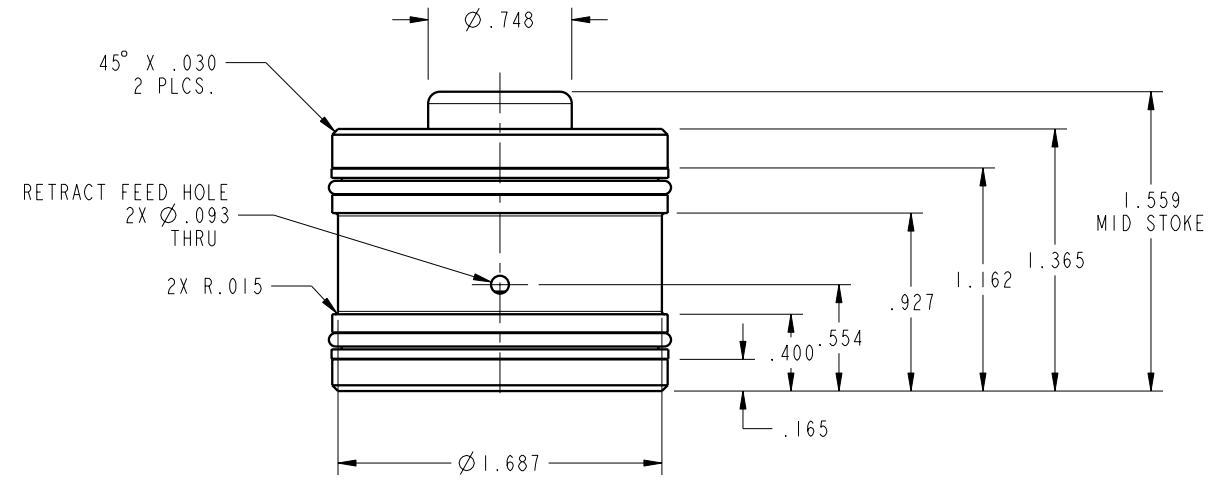

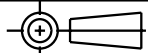


ILC21411300 REV A ECN 2717



NOTE: RETURN SPRING INCLUDED WITH CYLINDER.
SPRING OMITTED FOR CLARITY

CAD CONTROL DRAWING		 VEKTEK, INC. 1334 E. SIXTH AVE. P.O. BOX 625 EMPORIA, KS. 66801 U.S.A.	
	21411300	A	CYL, CM, PL DN, 5200LB
REV	IN ACCORDANCE WITH ECN	EFFECTIVE DATE	REVISED BY
DATE	8/21/14	8/26/14	
REFERENCE MODEL 21411300	REF REV A	3/8-16 THREAD	
TOLERANCES DO NOT APPLY DIMENSIONS ARE NOMINAL		SIZE B	ILC21411300 REV A
DRAWING STATUS: Released PRODUCTION APPROVED FOR RELEASED STATUS ONLY		FORM FEG036, Rev. B	