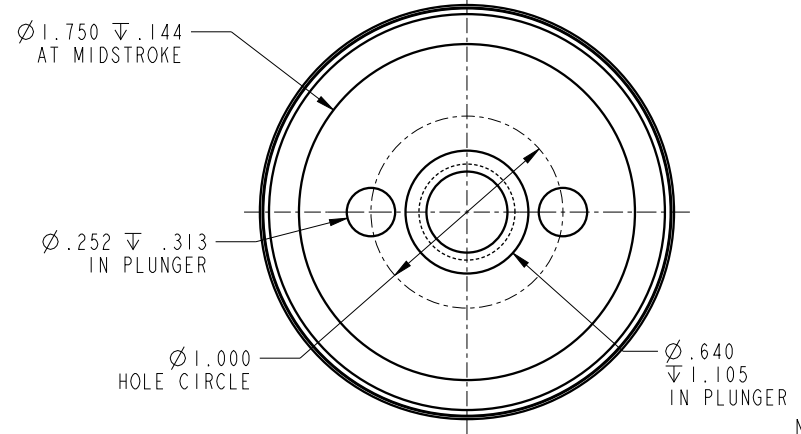
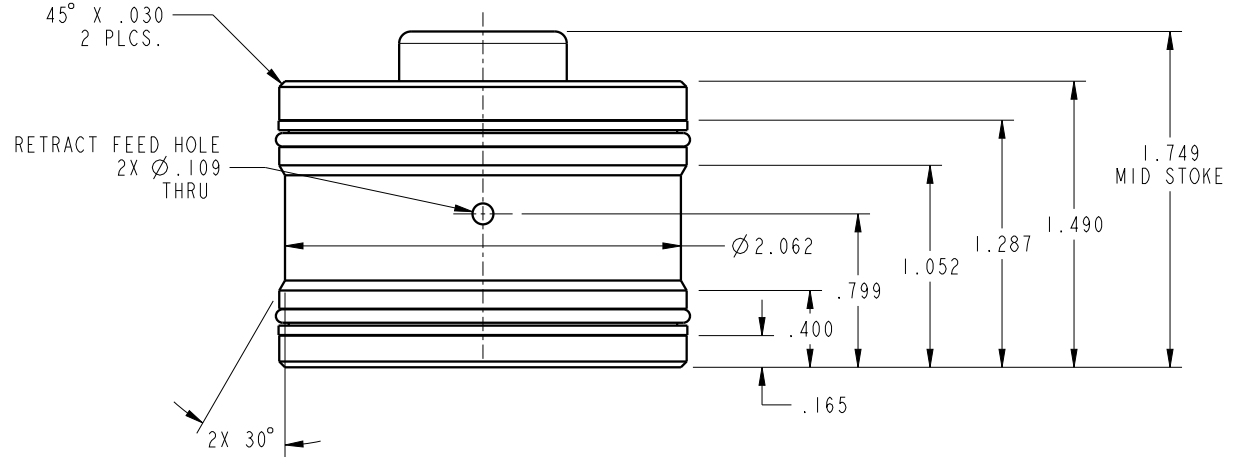


ILC21411600 REV A ECN 2802



NOTE: RETURN SPRING INCLUDED WITH CYLINDER.
SPRING OMITTED FOR CLARITY

CAD CONTROL DRAWING			
		VEKTEK, INC. 1334 E. SIXTH AVE. P.O. BOX 625 EMPORIA, KS. 66801 U.S.A.	

A	2802	RELEASE	DKC	3/3/15
REV	IN ACCORDANCE WITH ECN	EFFECTIVE DATE	REVISED BY	DATE
DRW BY:	DKC	DRAWING STATUS: Released		
DATE:	8/21/14	PRODUCTION APPROVED FOR RELEASED STATUS ONLY		

21411600	A	CYL, CM, PULL, 9000LB
REFERENCE MODEL	REF REV	1/2-13 THREAD
TOLERANCES DO NOT APPLY DIMENSIONS ARE NOMINAL		SIZE B
		ILC21411600 REV A

FORM FEG036, Rev. B