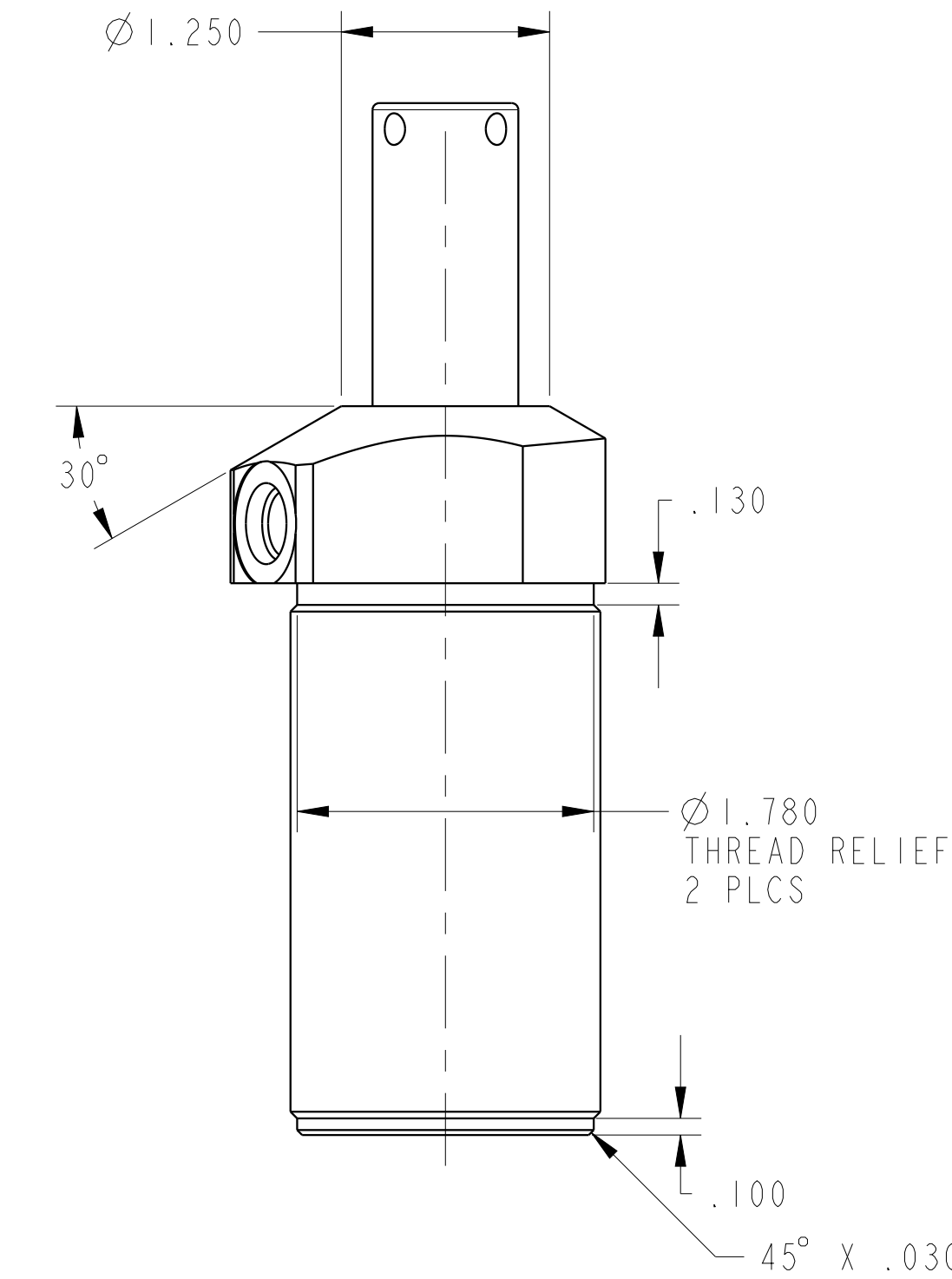
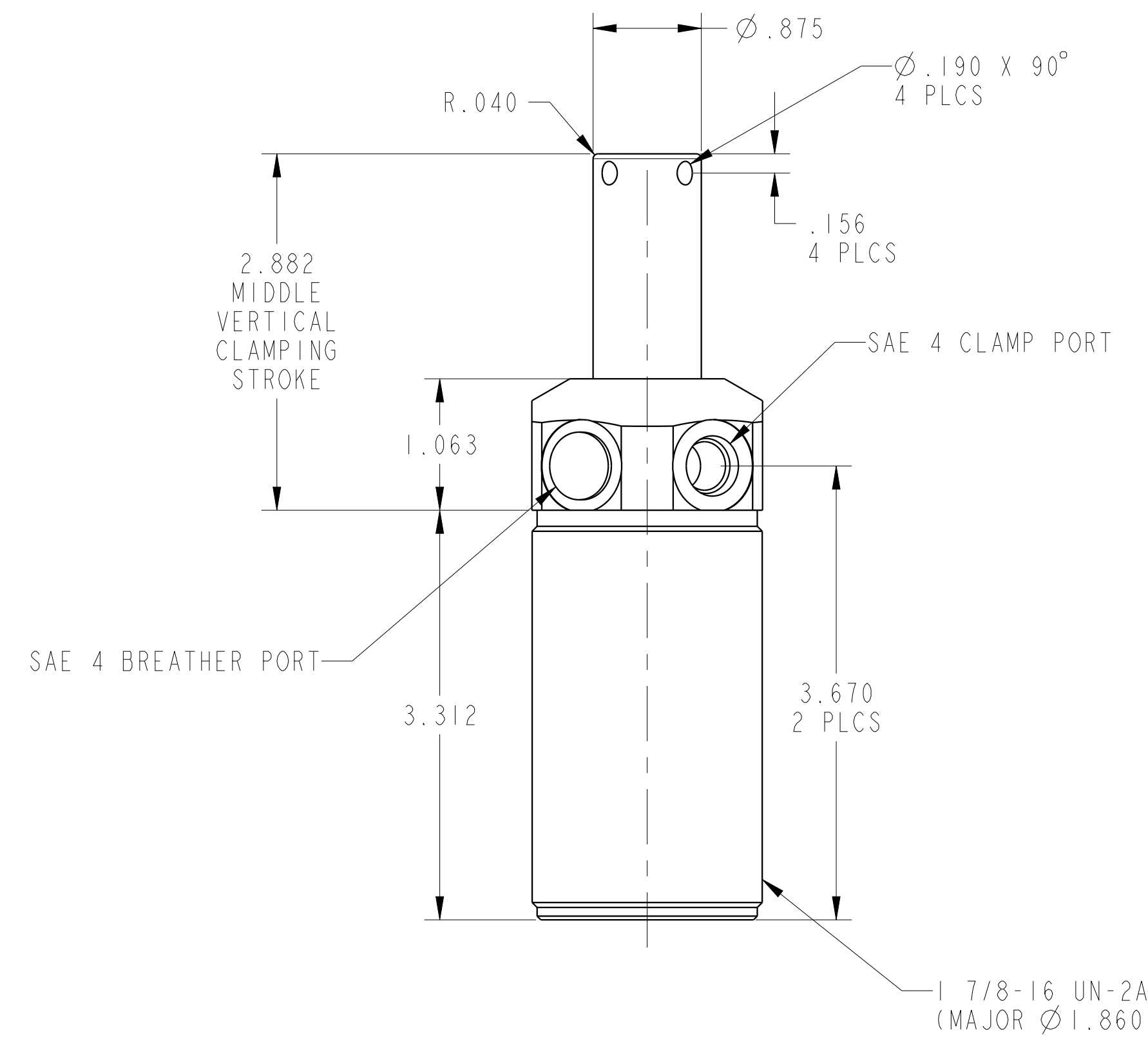
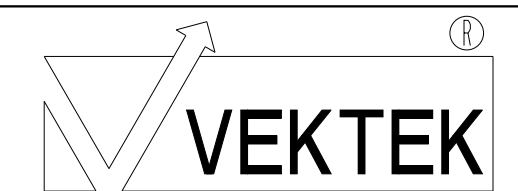


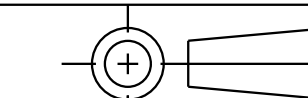
1LC25011312 REVA ECN4452



CAD CONTROL
DRAWING



VEKTEK, INC.
1334 E. SIXTH AVE. P.O. BOX 625
EMPORIA, KS. 66801 U.S.A.



A	4452	RELEASE	ALS	5/21/21
REV	IN ACCORDANCE WITH ECN	EFFECTIVE DATE	REVISED BY	DATE
DRW BY: ALS		DRAWING STATUS: Released		
DATE: 5/21/21		PRODUCTION APPROVED FOR RELEASED STATUS ONLY		

25011312	A
REFERENCE MODEL	REF REV
TOLERANCES DO NOT APPLY DIMENSIONS ARE NOMINAL	

CYL, PULL, TB, 3100
SIZE D
1LC25011312
REV A