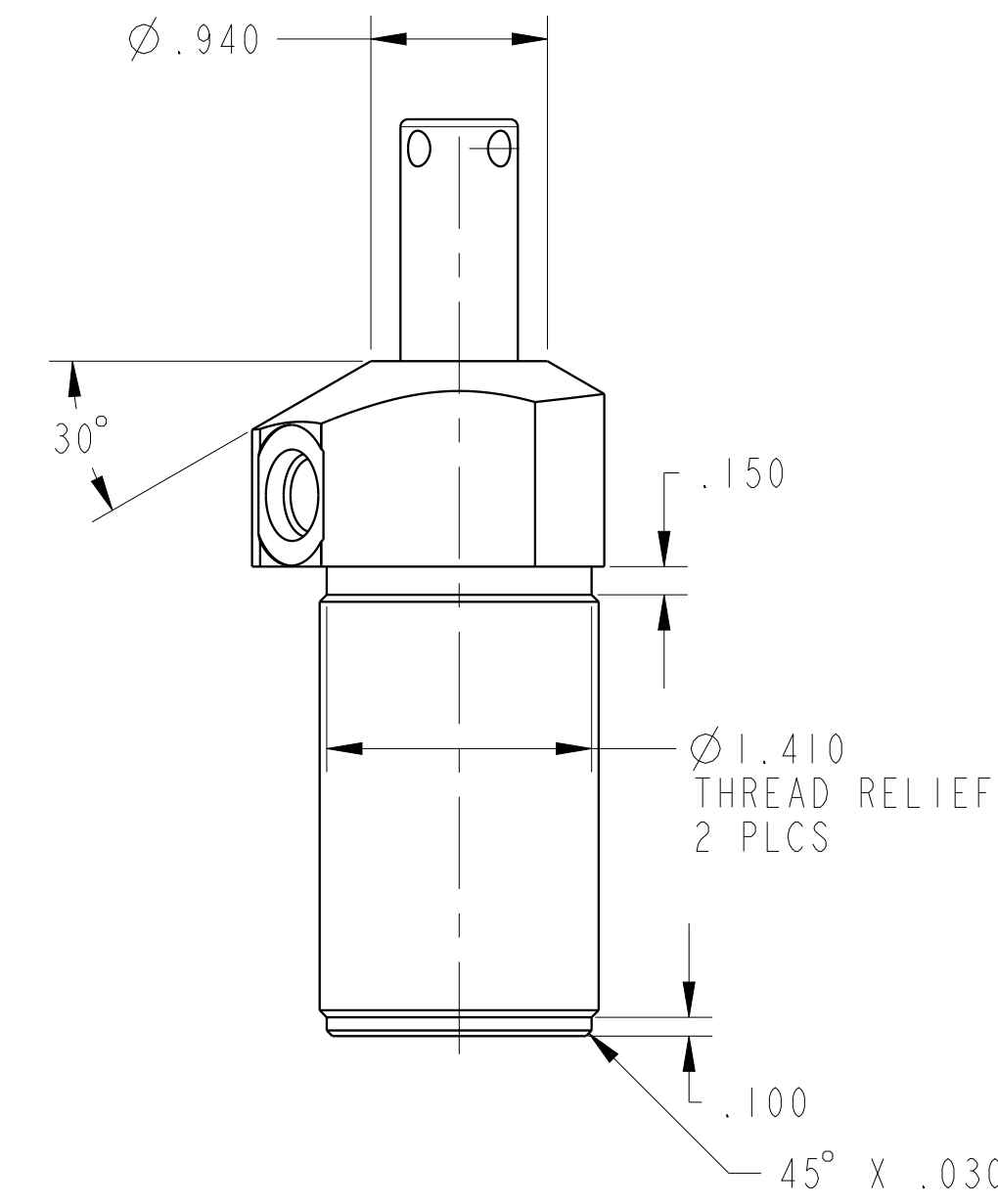
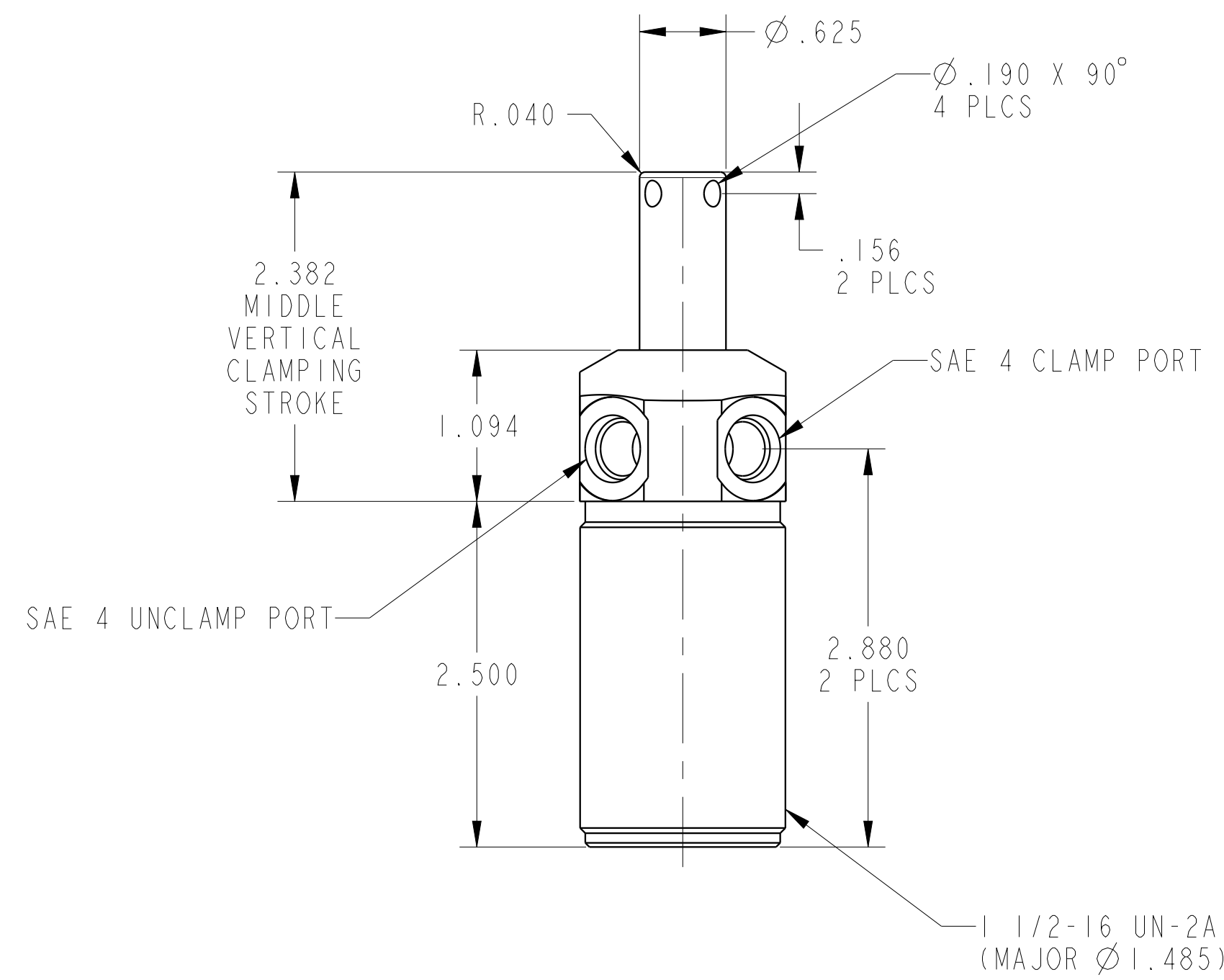
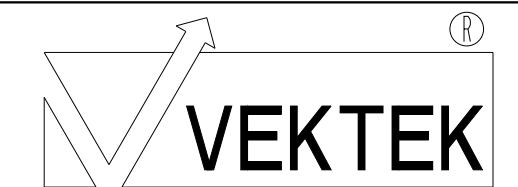


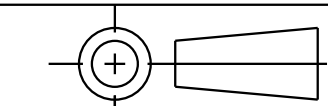
ILC25020909 REVA ECN4452



CAD CONTROL
DRAWING



VEKTEK, INC.
1334 E. SIXTH AVE. P.O. BOX 625
EMPORIA, KS. 66801 U.S.A.



| | | | | | | | | |
|---------|------------------------|--|------------|---------|-------------------------|---------|------------------------|----------|
| A | 4452 | RELEASE | ALS | 5/21/21 | 25020909 | A | CYL, PP, TB, 3000/1400 | |
| REV | IN ACCORDANCE WITH ECN | EFFECTIVE DATE | REVISED BY | DATE | REFERENCE MODEL | REF REV | | |
| DRW BY: | ALS | DRAWING STATUS: Released | | | TOLERANCES DO NOT APPLY | | SIZE | |
| DATE: | 5/21/21 | PRODUCTION APPROVED FOR RELEASED STATUS ONLY | | | DIMENSIONS ARE NOMINAL | | D | |
| | | | | | | | ILC25020909 | REV A |
| | | | | | | | FORM FEG036, Rev. B | |