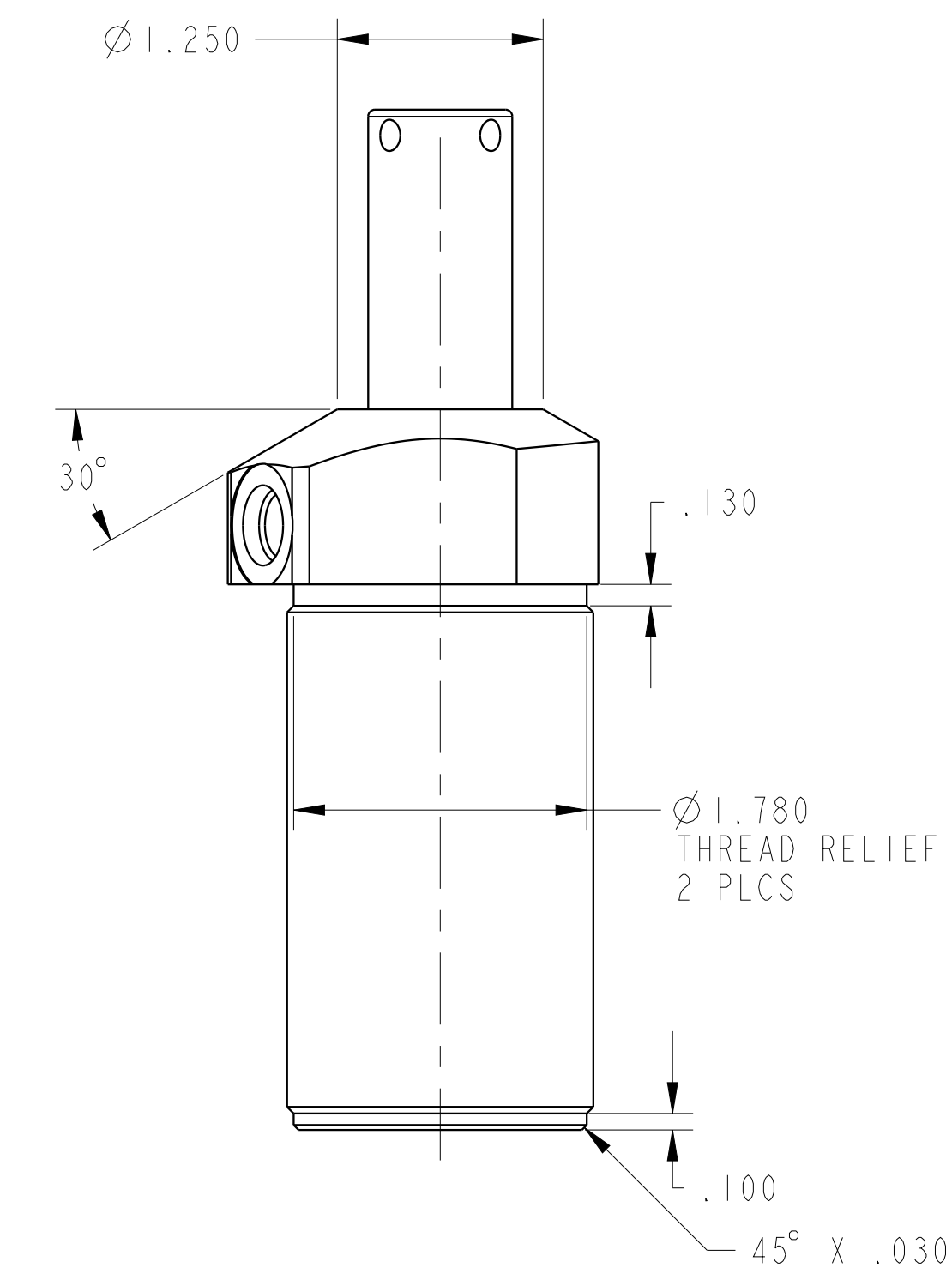
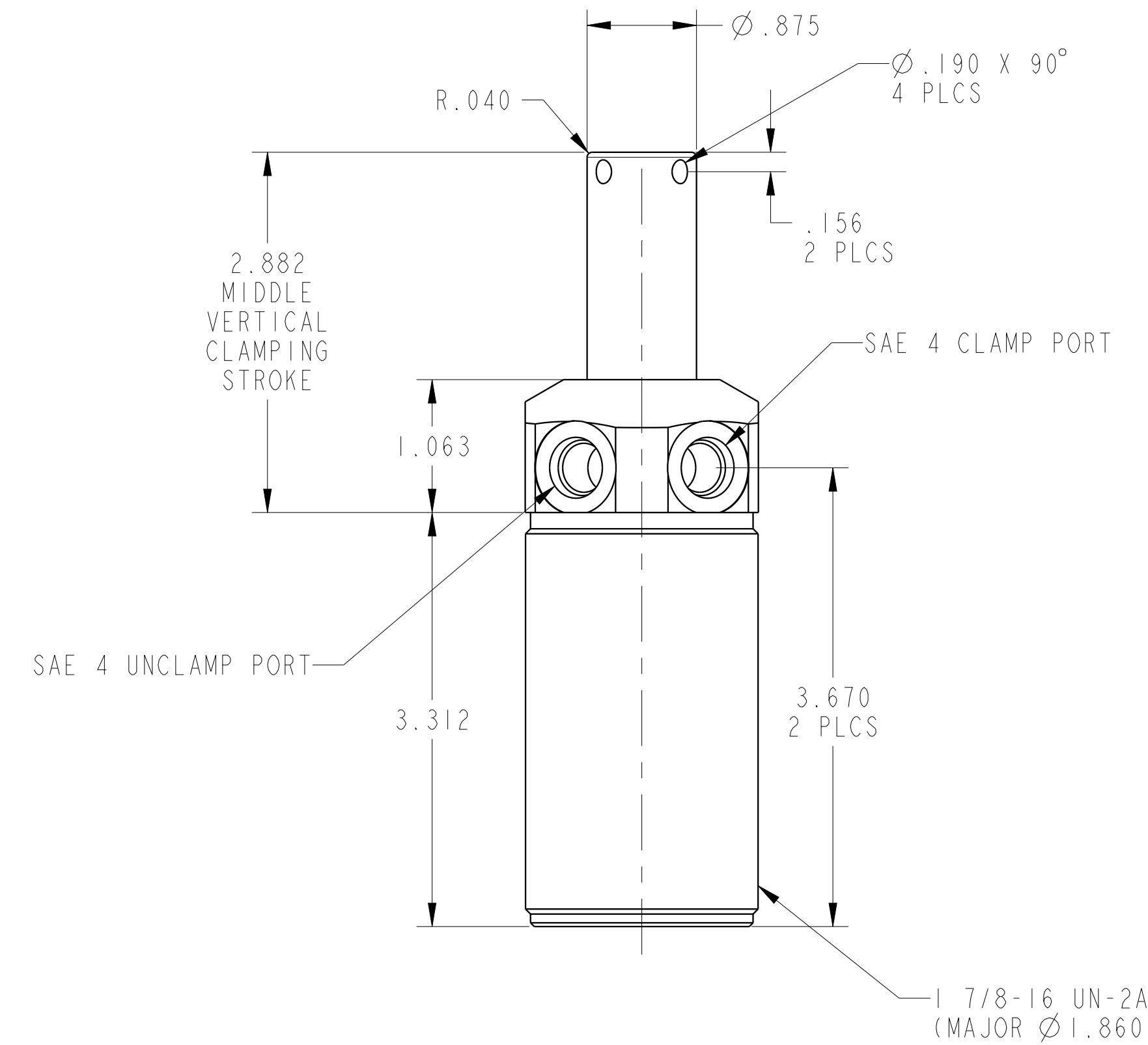
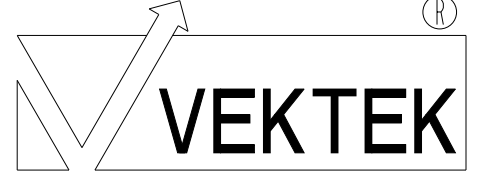
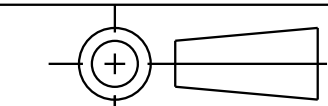


1LC25021312 REVA ECN4452



CAD CONTROL DRAWING		
	VEKTEK, INC. 1334 E. SIXTH AVE. P.O. BOX 625 EMPORIA, KS. 66801 U.S.A.	

A	4452	RELEASE	ALS	5/21/21
REV	IN ACCORDANCE WITH ECN	EFFECTIVE DATE	REVISED BY	DATE
DRW BY:	ALS	DRAWING STATUS: Released		
DATE:	5/21/21	PRODUCTION APPROVED FOR RELEASED STATUS ONLY		

	25021312	A	CYL, PP, TB, 6100/3100
TOLERANCES DO NOT APPLY DIMENSIONS ARE NOMINAL	SIZE D	1LC25021312	REV A