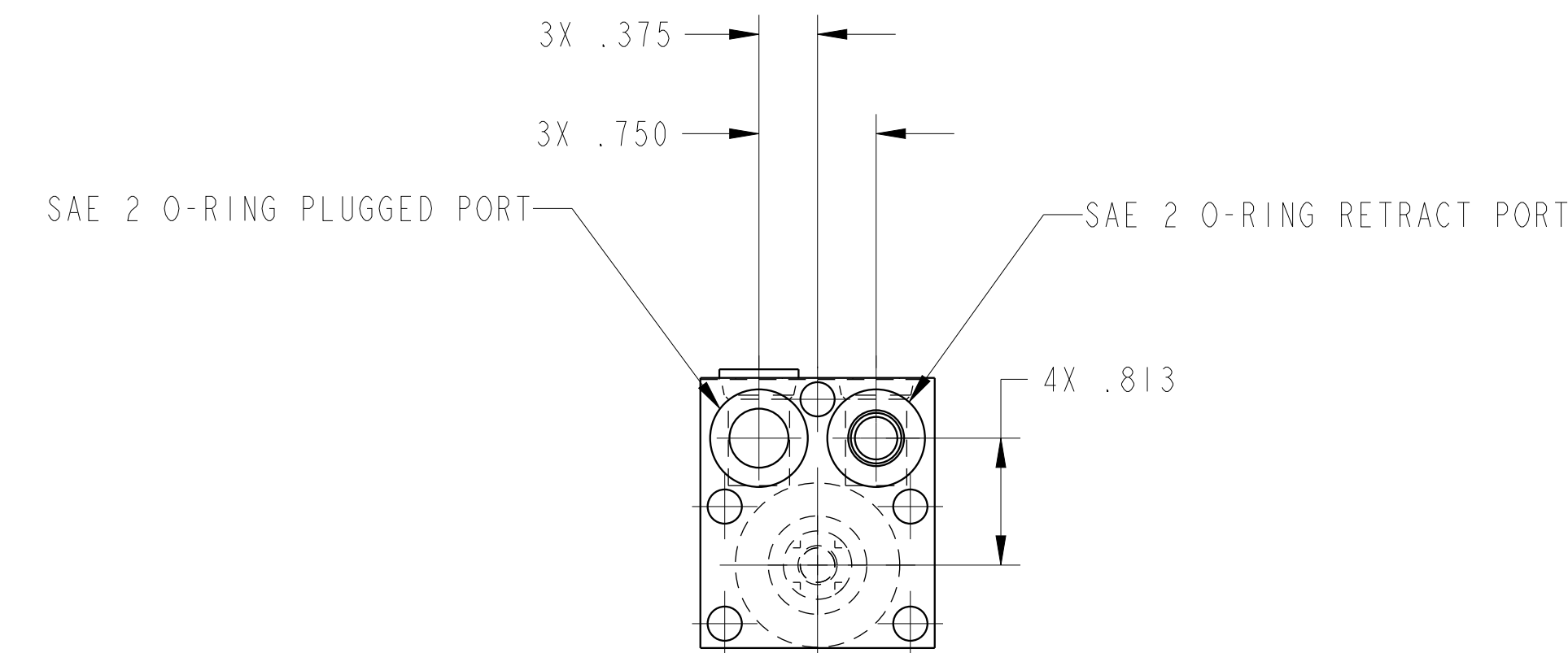
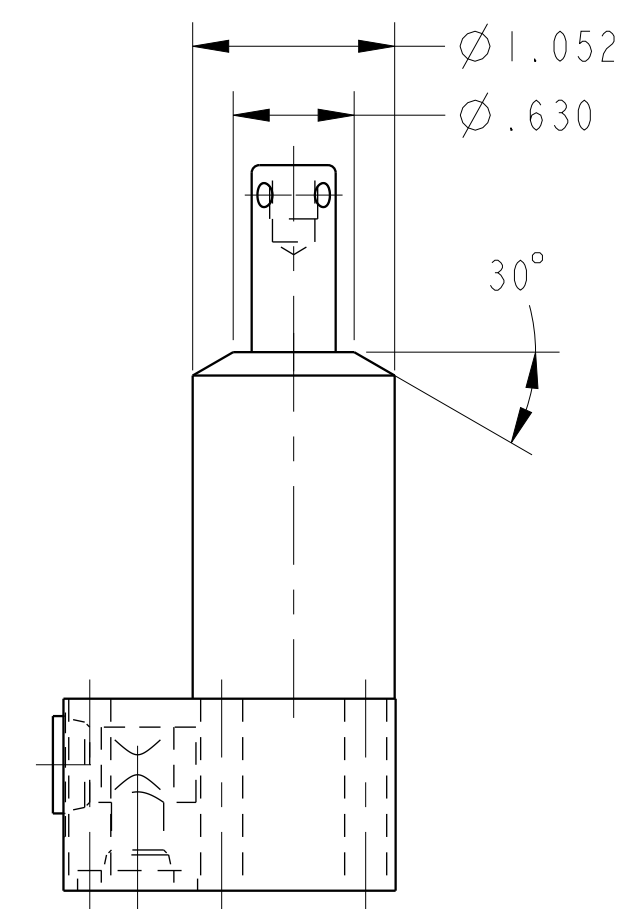
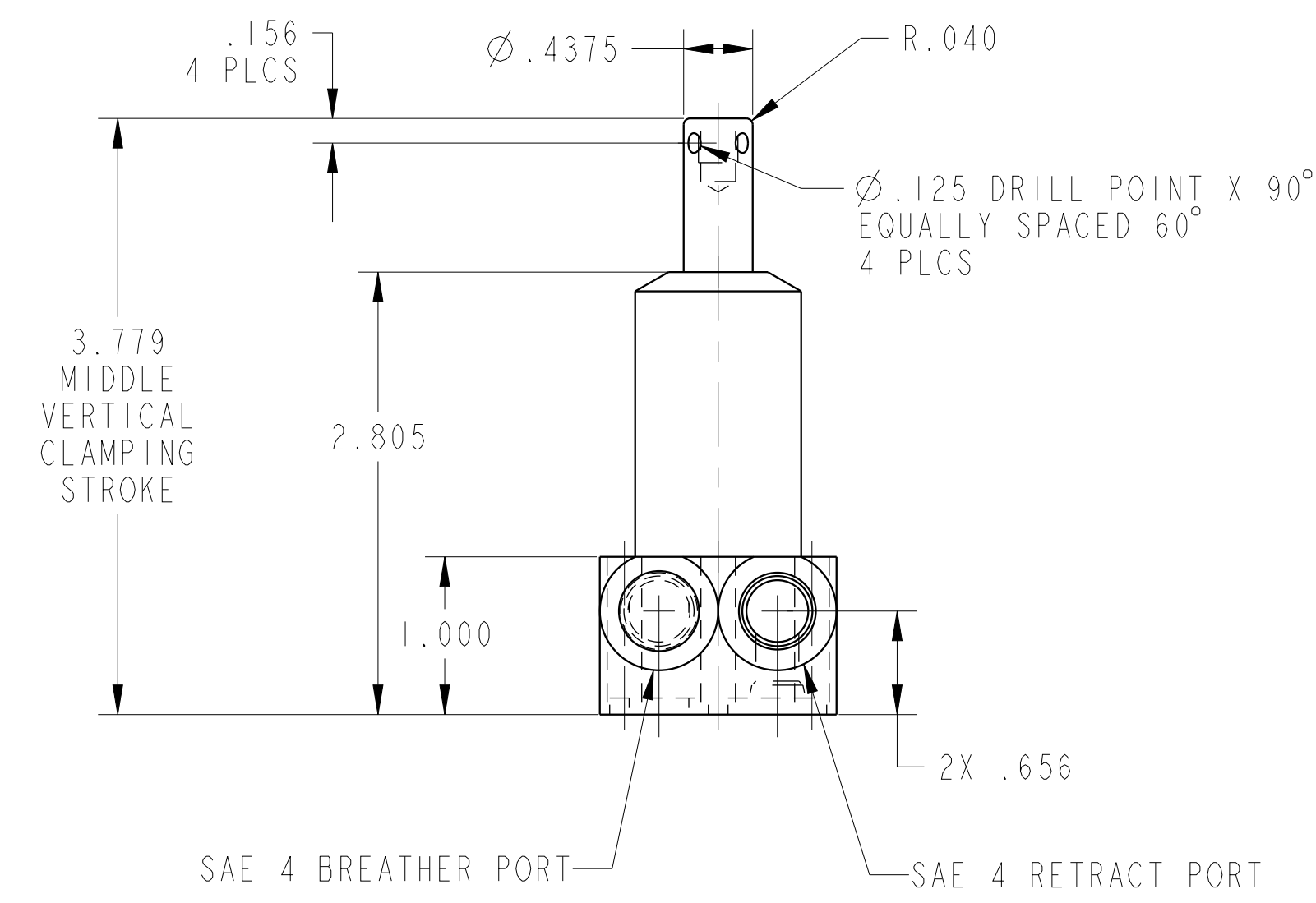


ILC25210502 REV A ECN 4609
SCALE 1.000



CAD CONTROL DRAWING			
		VEKTEK, INC. 1334 E. SIXTH AVE. P.O. BOX 625 EMPORIA, KS. 66801 U.S.A.	

A	4609	RELEASE	RLK	1/20/22
REV	IN ACCORDANCE WITH ECN	EFFECTIVE DATE	REVISED BY	DATE
DRW BY:	RLK	DRAWING STATUS: Released		
DATE:	1/20/22	PRODUCTION APPROVED FOR RELEASED STATUS ONLY		

25210502	A	CYL, PULL, BF, 470
REFERENCE MODEL	REF REV	SIZE
TOLERANCES DO NOT APPLY DIMENSIONS ARE NOMINAL		D ILC25210502 REV A