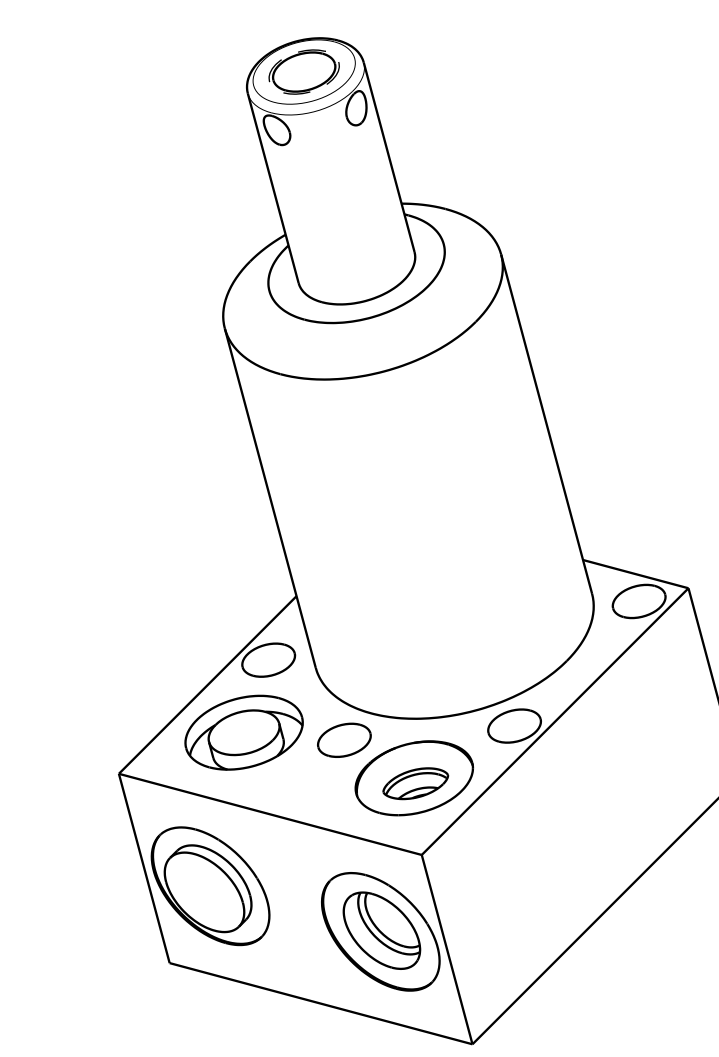
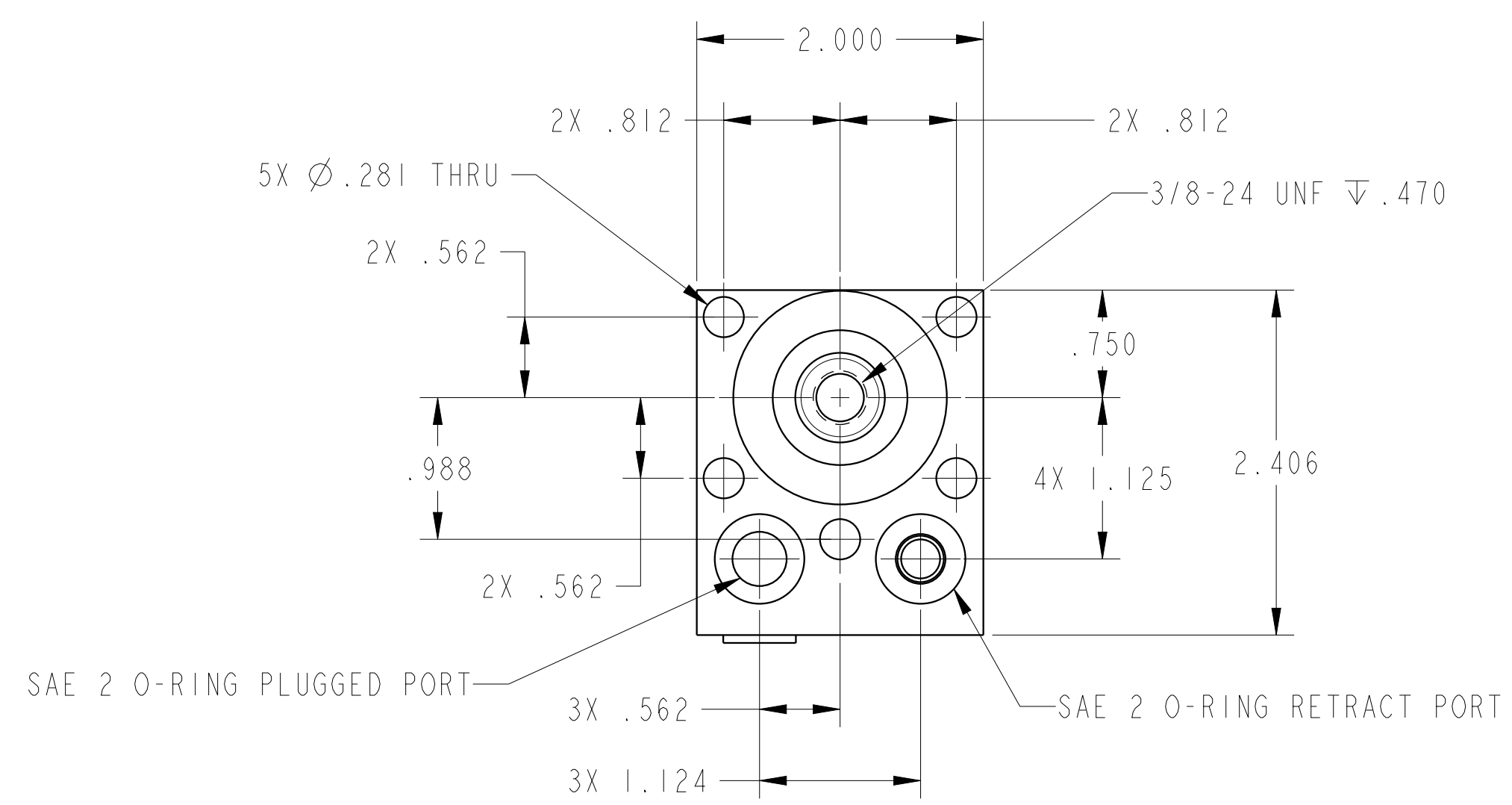


1

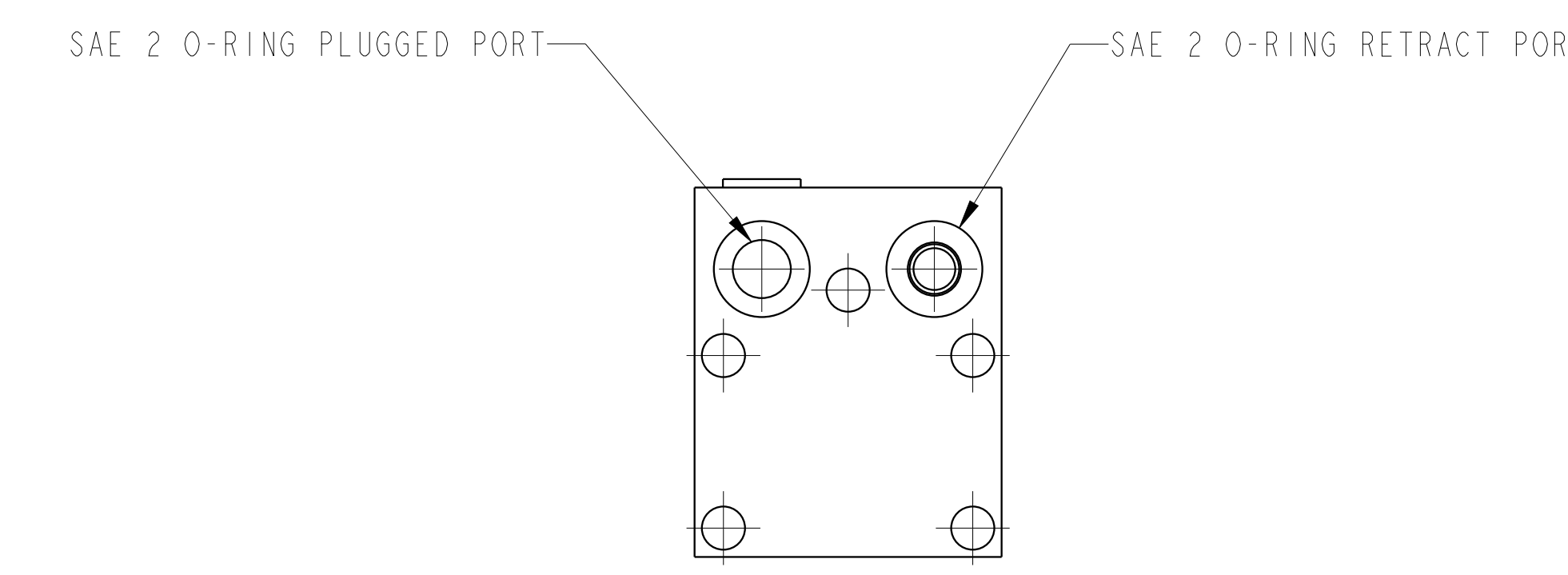
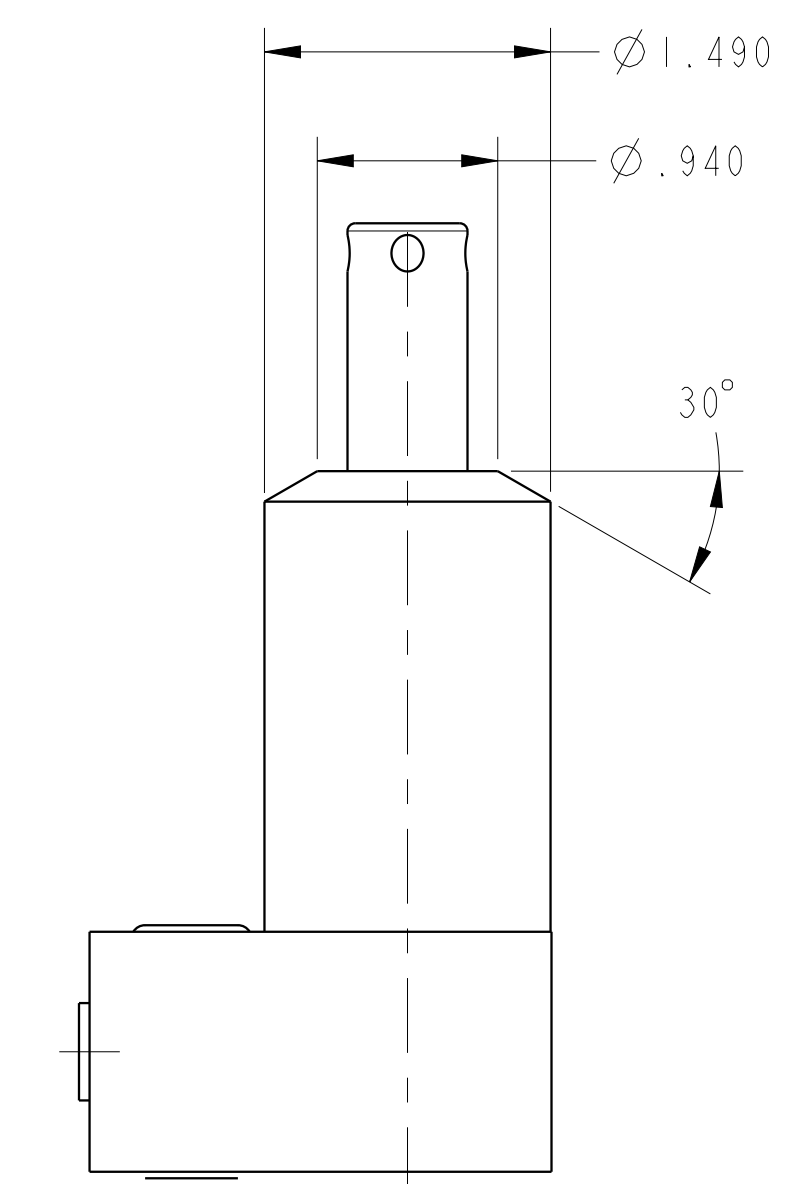
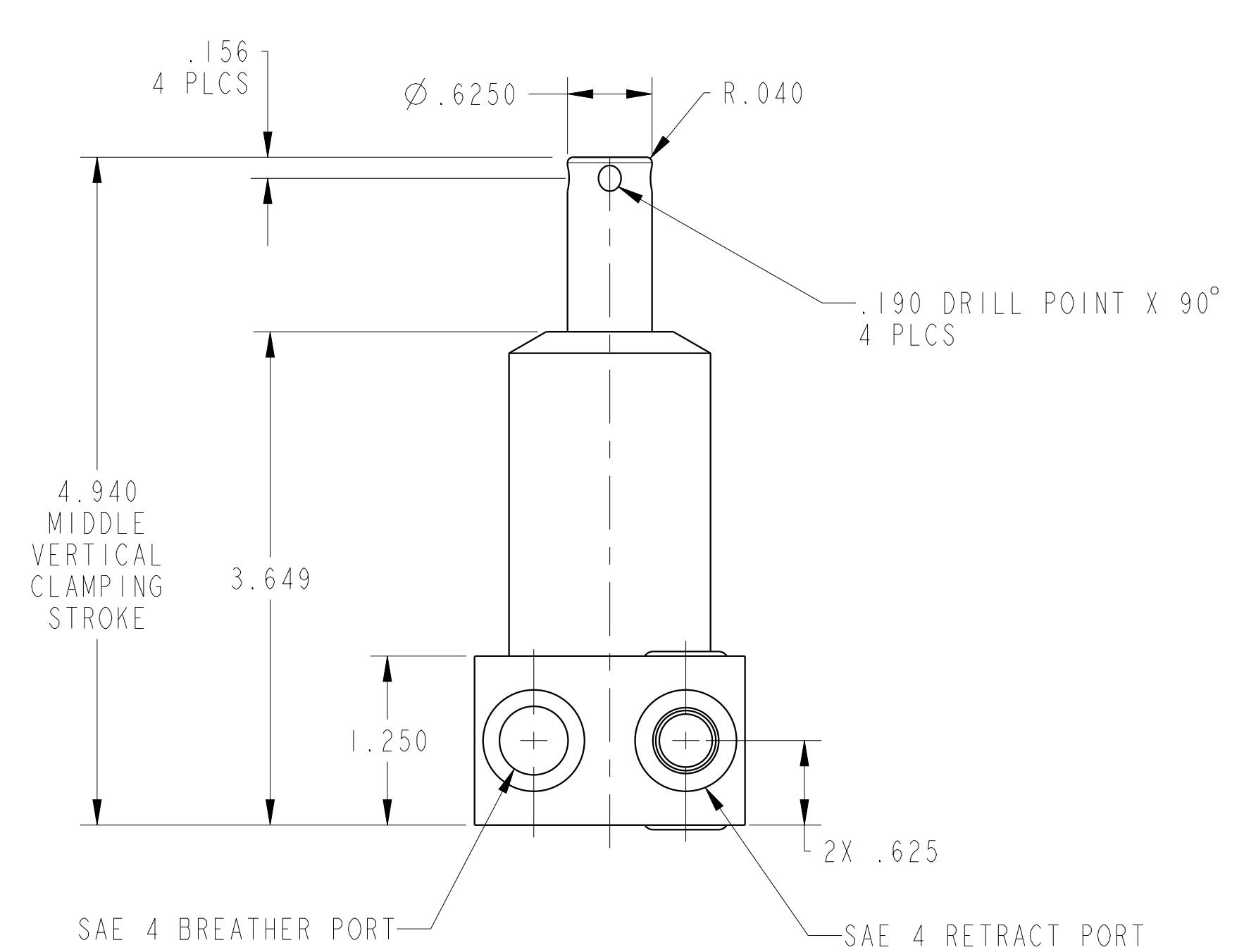
2

3

4



ILC25210902 REV A ECN4448



CAD CONTROL DRAWING		
	VEKTEK, INC. 1334 E. SIXTH AVE. P.O. BOX 625 EMPORIA, KS. 66801 U.S.A.	

A	4448	RELEASE	ALS	5/18/21	25210902	A	CYL, PULL, BF, 1400
REV	IN ACCORDANCE WITH ECN	EFFECTIVE DATE	REVISED BY	DATE	REFERENCE MODEL	REF REV	---
DRW BY:	ALS	DRAWING STATUS: Released			TOLERANCES DO NOT APPLY		SIZE
DATE:	5/19/21	PRODUCTION APPROVED FOR RELEASED STATUS ONLY			DIMENSIONS ARE NOMINAL		D
					ILC25210902	REV	A
							FORM FEG036, Rev. B

1

2

3

4

SHEET 1 OF 1