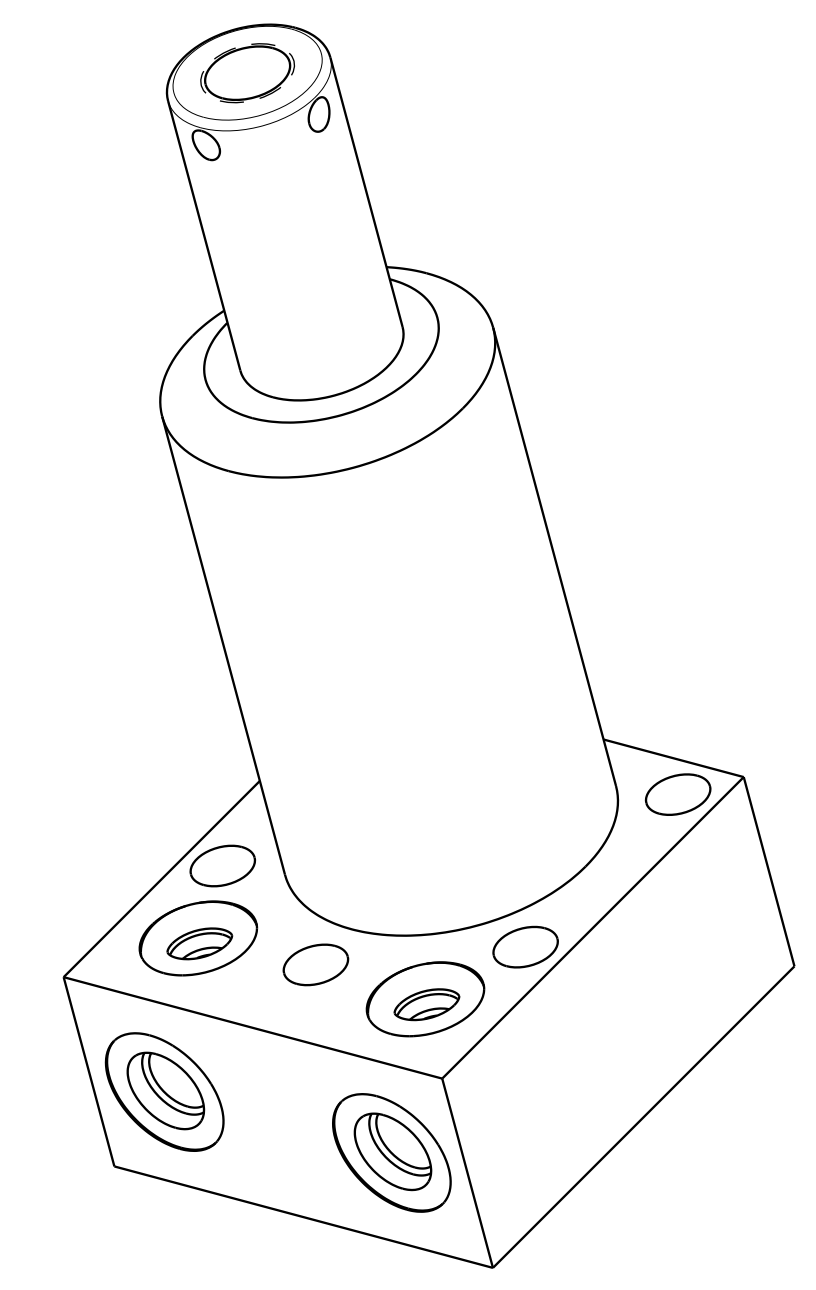
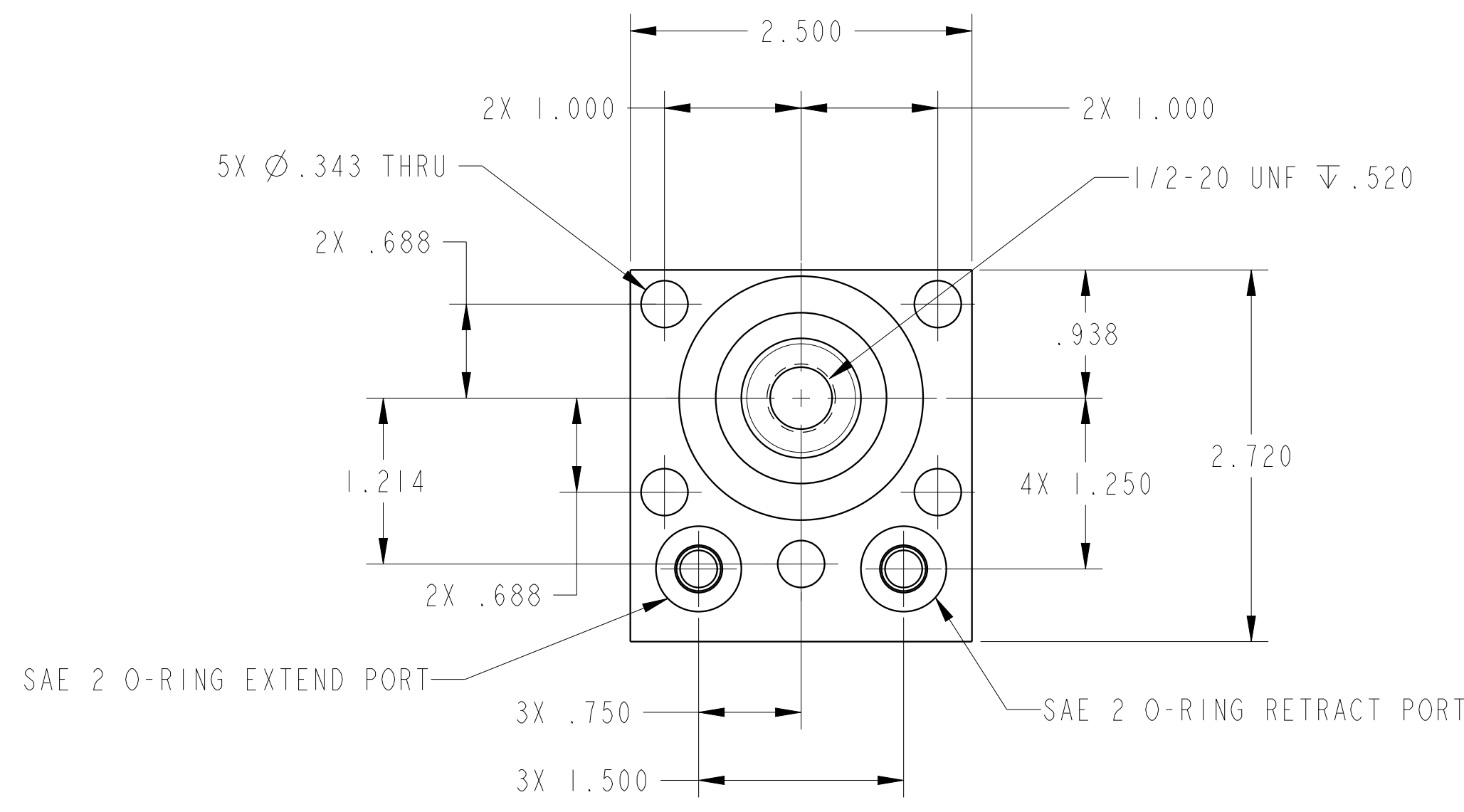


1

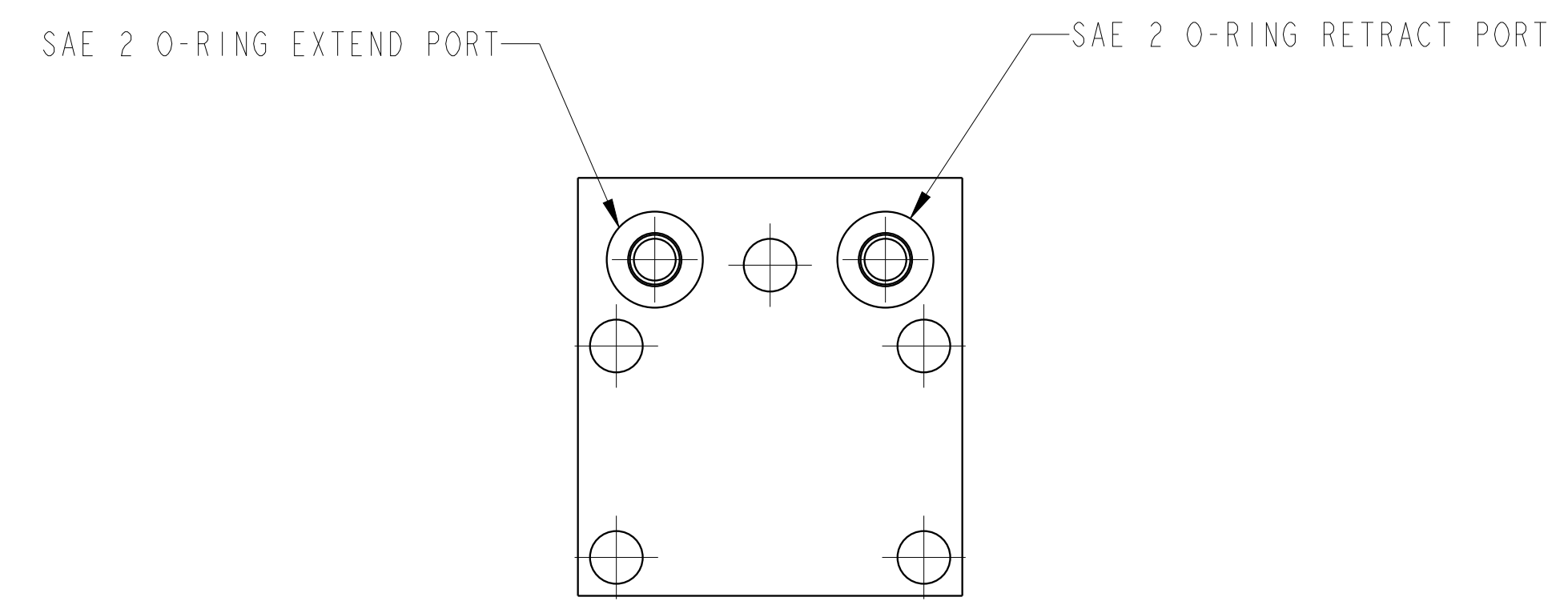
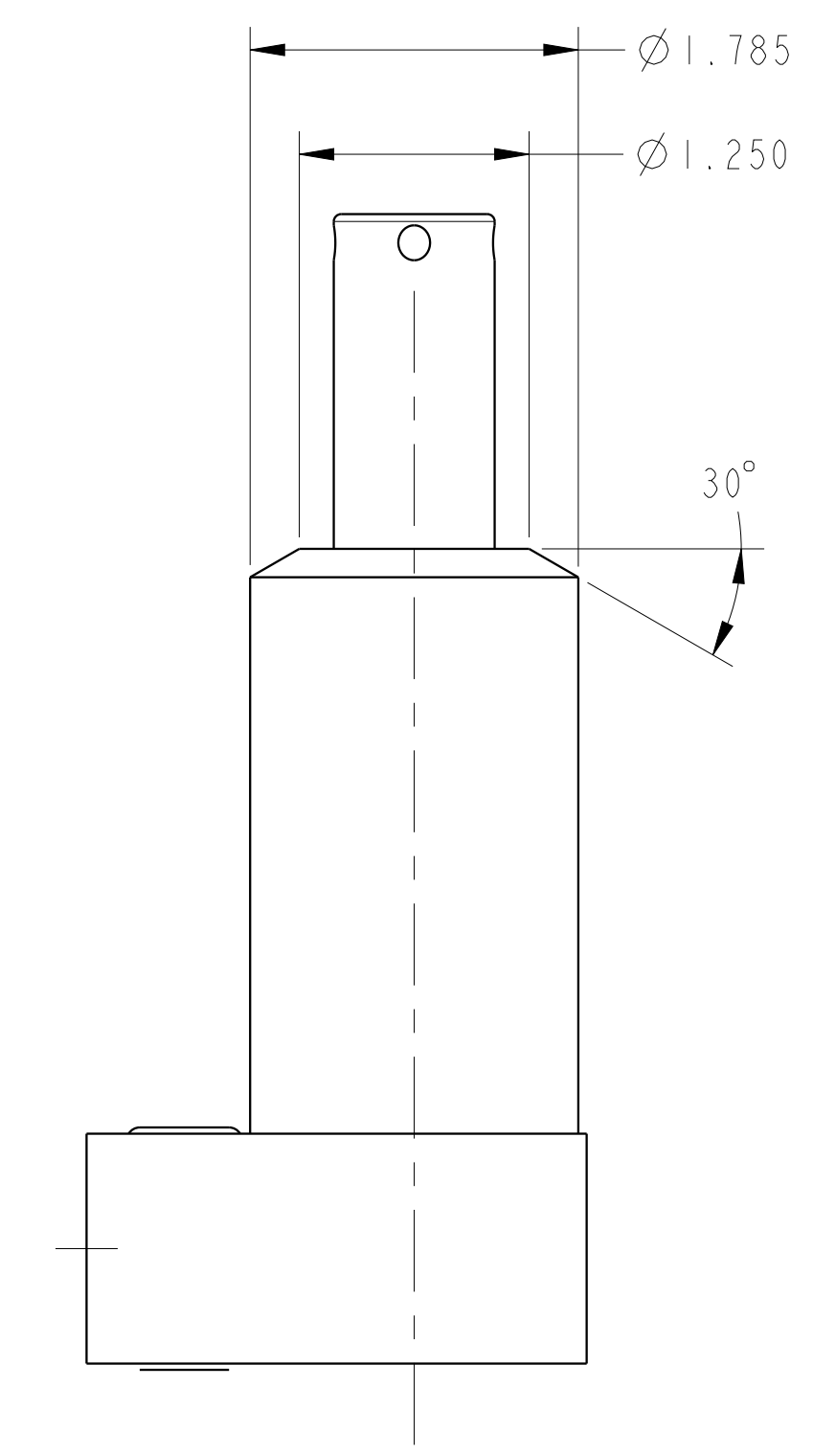
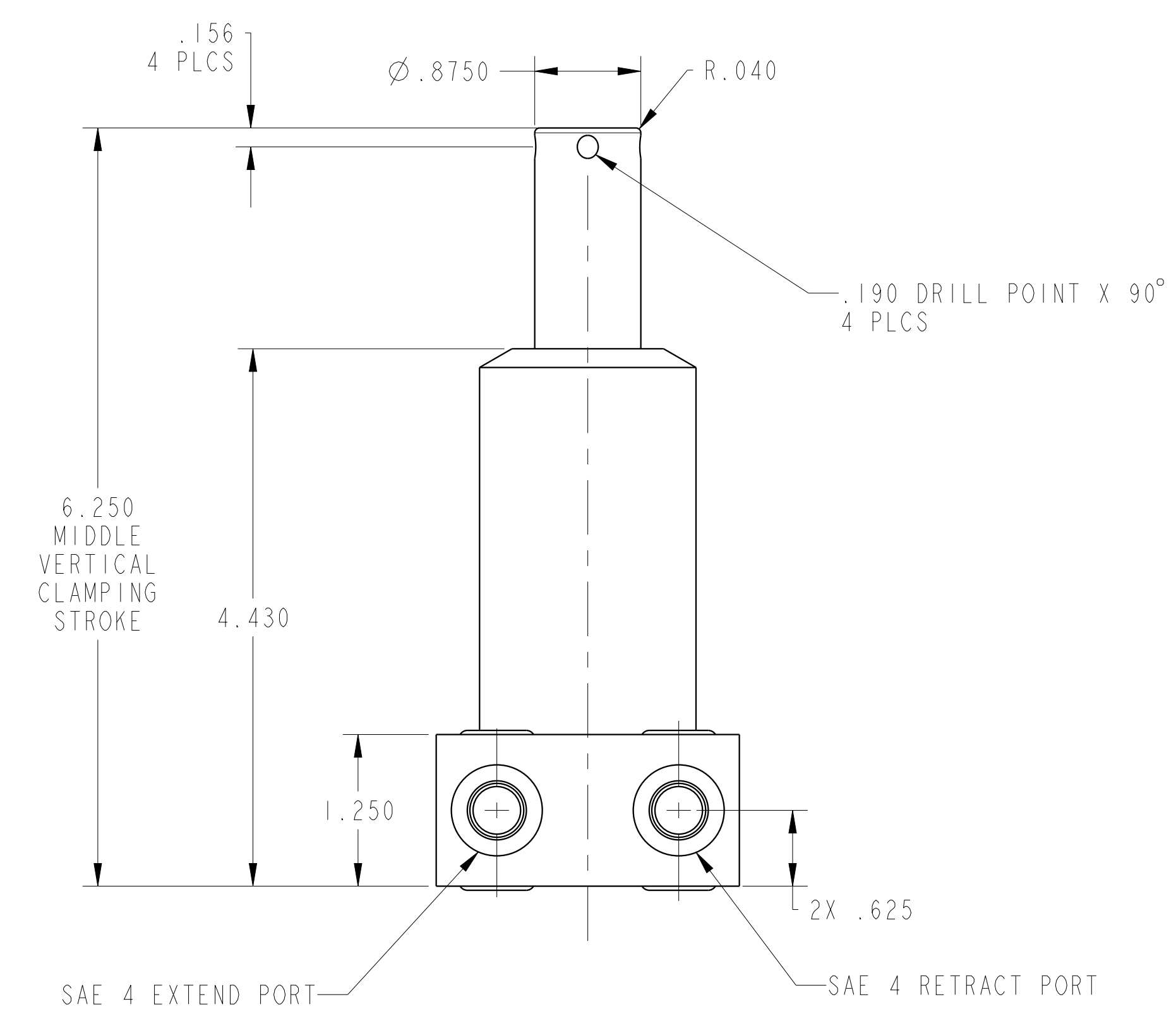
2

3

4



ILC25221302 REV A ECN4448



CAD CONTROL DRAWING		
	VEKTEK, INC. 1334 E. SIXTH AVE. P.O. BOX 625 EMPORIA, KS. 66801 U.S.A.	

A	4448	RELEASE	ALS	6/15/21	25221302	A	CYL, PP, BF, 6100
REV	IN ACCORDANCE WITH ECN	EFFECTIVE DATE	REVISED BY	DATE	REFERENCE MODEL	REF REV	---
DRW BY:	ALS	DRAWING STATUS: Released			TOLERANCES DO NOT APPLY	SIZE	ILC25221302
DATE:	5/19/21	PRODUCTION APPROVED FOR RELEASED STATUS ONLY			DIMENSIONS ARE NOMINAL	D	REV A

1

2

3

4

SHEET 1 OF 1