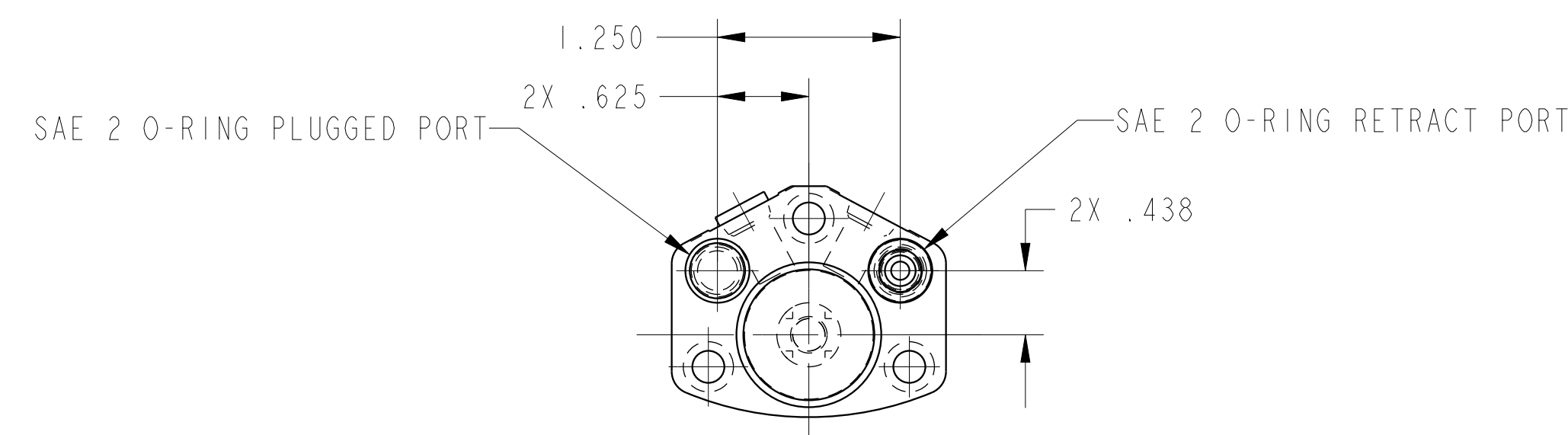
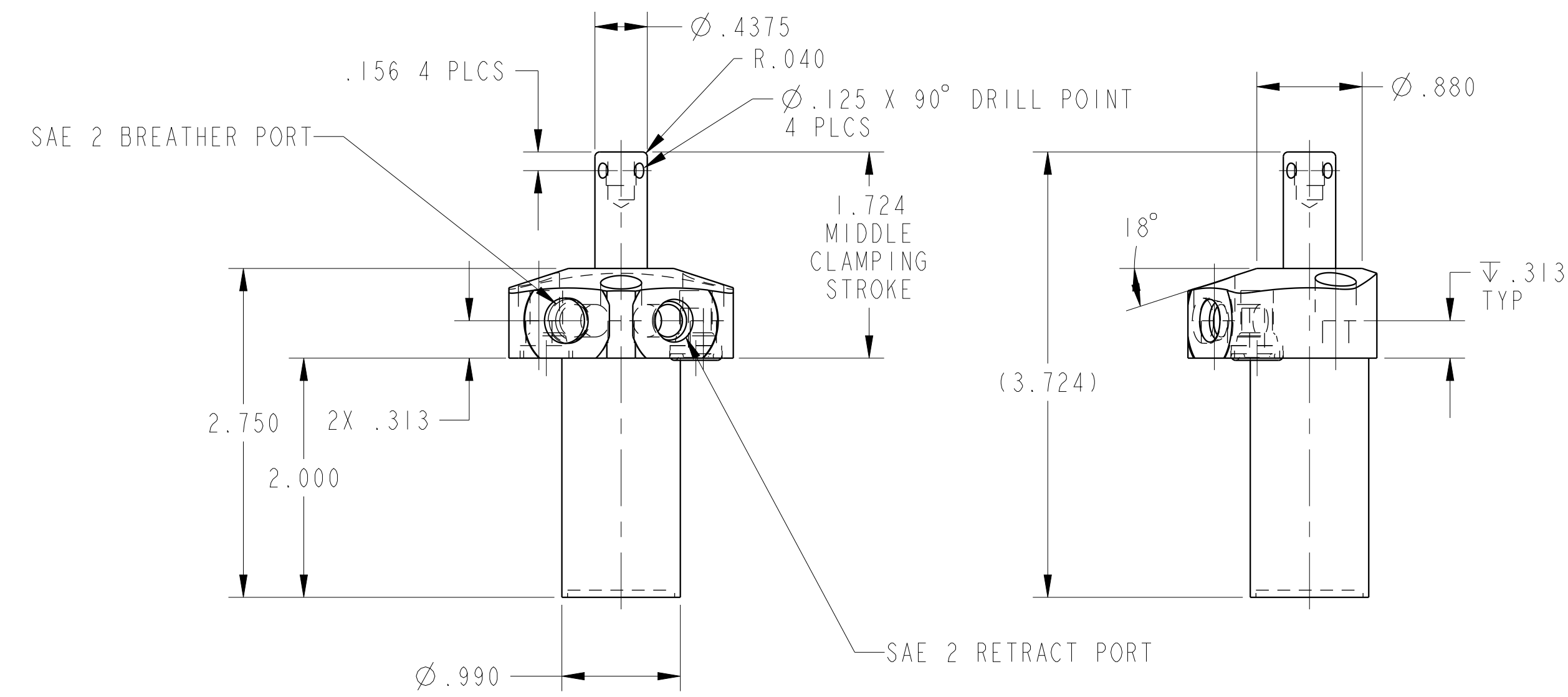


ILC25610500 REV A ECN 4609  
SCALE 1.000



<b>CAD CONTROL DRAWING</b>			
		VEKTEK, INC. 1334 E. SIXTH AVE. P.O. BOX 625 EMPORIA, KS. 66801 U.S.A.	

A	4609	RELEASE	RLK	1/21/22
REV	IN ACCORDANCE WITH ECN	EFFECTIVE DATE	REVISED BY	DATE
DRW BY: RLK		DRAWING STATUS: <b>Released</b>		
DATE: 1/21/22		PRODUCTION APPROVED FOR RELEASED STATUS ONLY		

25610500	A	CYL, PULL, TF, 470
REFERENCE MODEL	REF REV	
TOLERANCES DO NOT APPLY DIMENSIONS ARE NOMINAL		SIZE D
ILC25610500		REV A