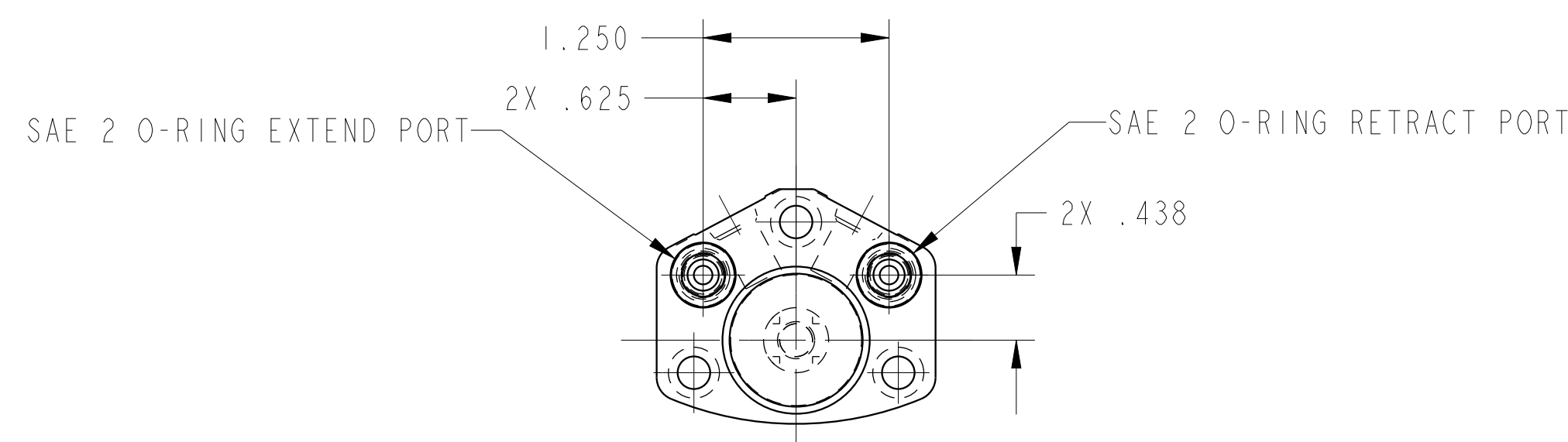
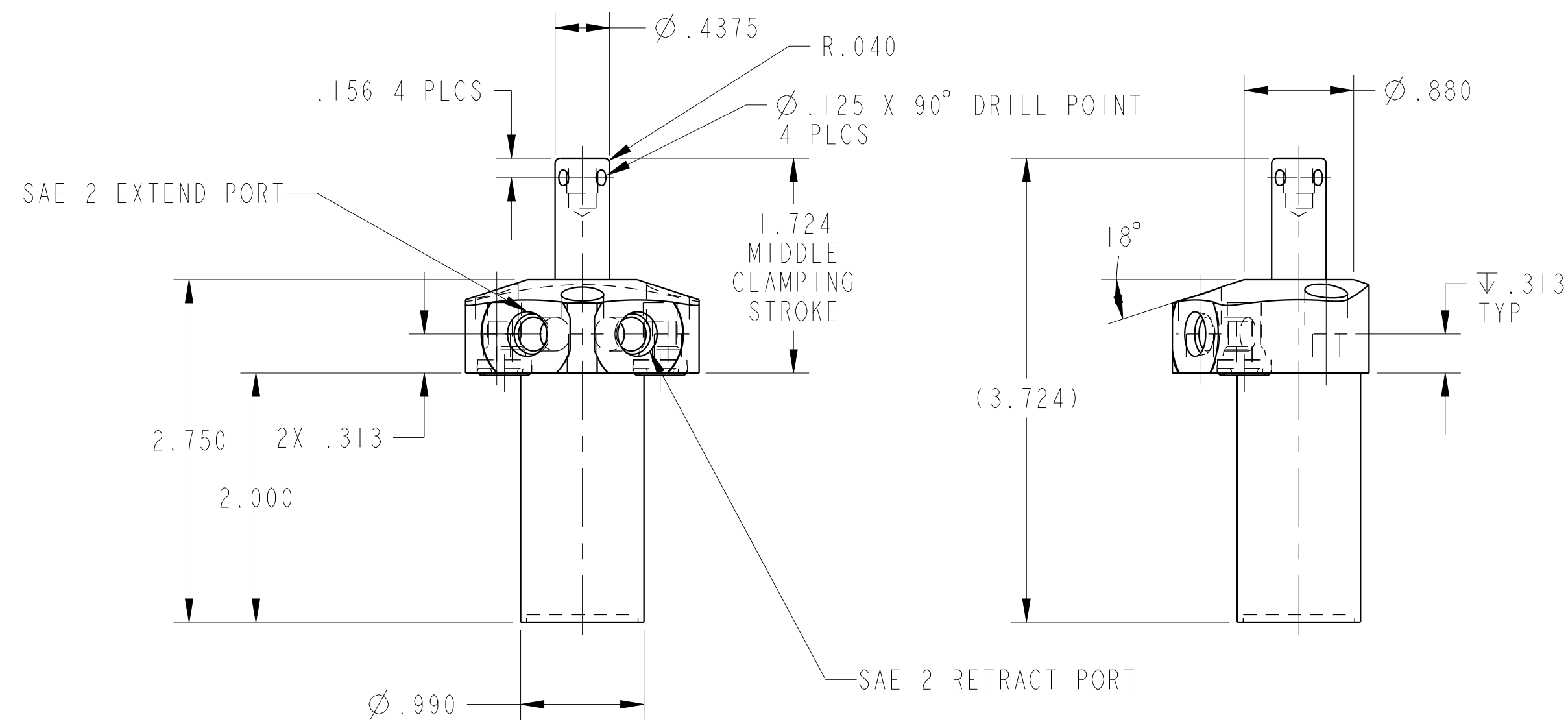


ILC25620500 REV A ECN 4609
SCALE 1.000



CAD CONTROL DRAWING		
	VEKTEK, INC. 1334 E. SIXTH AVE. P.O. BOX 625 EMPORIA, KS. 66801 U.S.A.	

A	4609	RELEASE	RLK	1/21/22
REV	IN ACCORDANCE WITH ECN	EFFECTIVE DATE	REVISED BY	DATE
DRW BY: RLK DATE: 1/21/22		DRAWING STATUS: Released PRODUCTION APPROVED FOR RELEASED STATUS ONLY		

25620500	A	CYL, PP, TF, 1200/470
REFERENCE MODEL	REF REV	
TOLERANCES DO NOT APPLY DIMENSIONS ARE NOMINAL		SIZE D ILC25620500 REV A