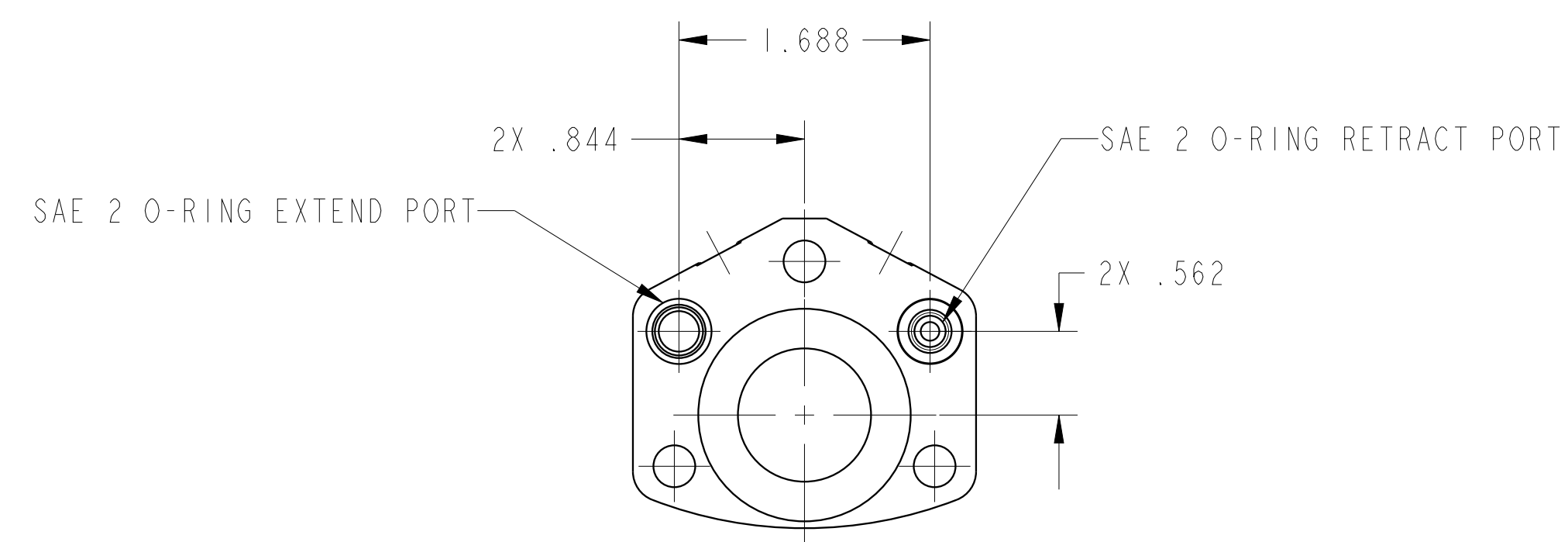
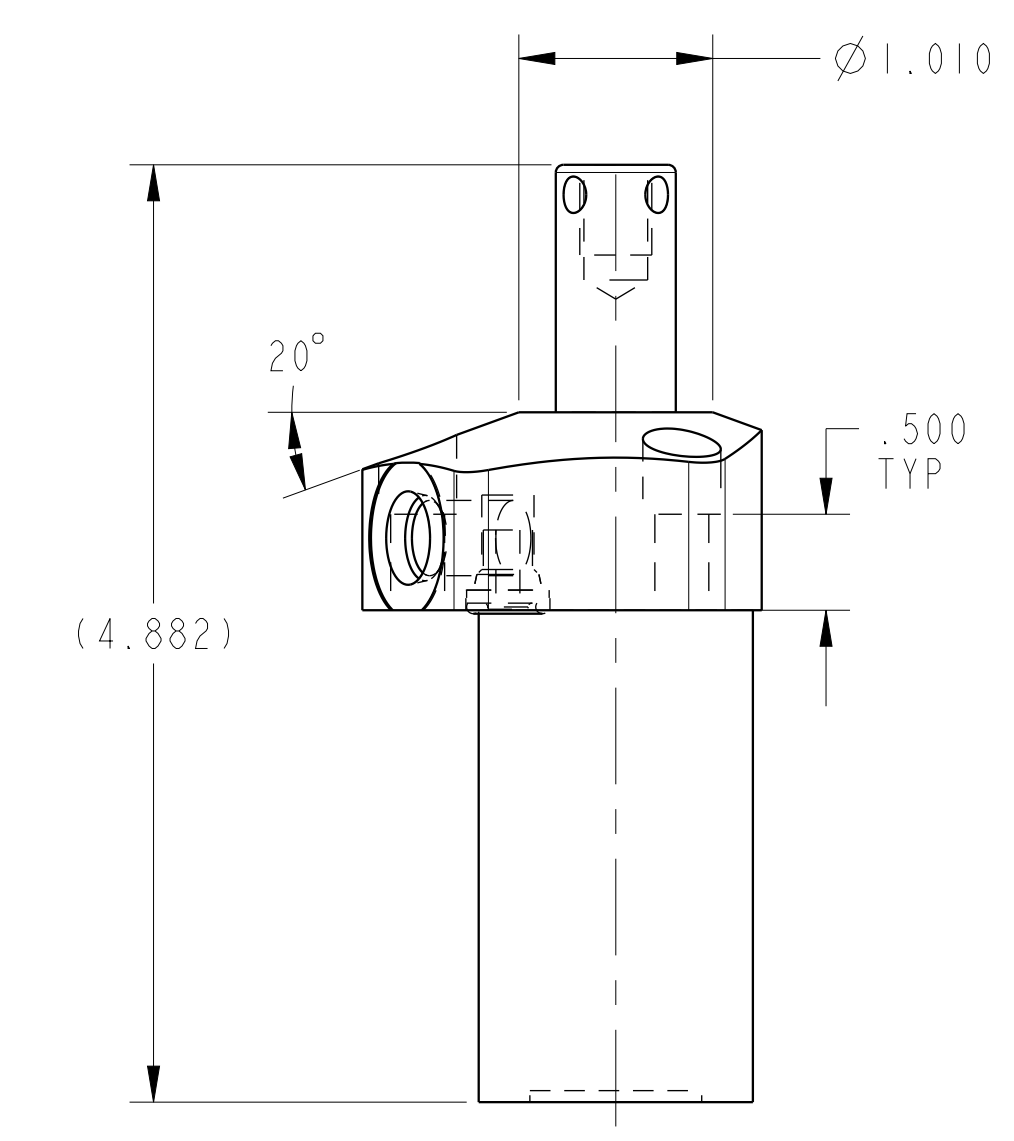
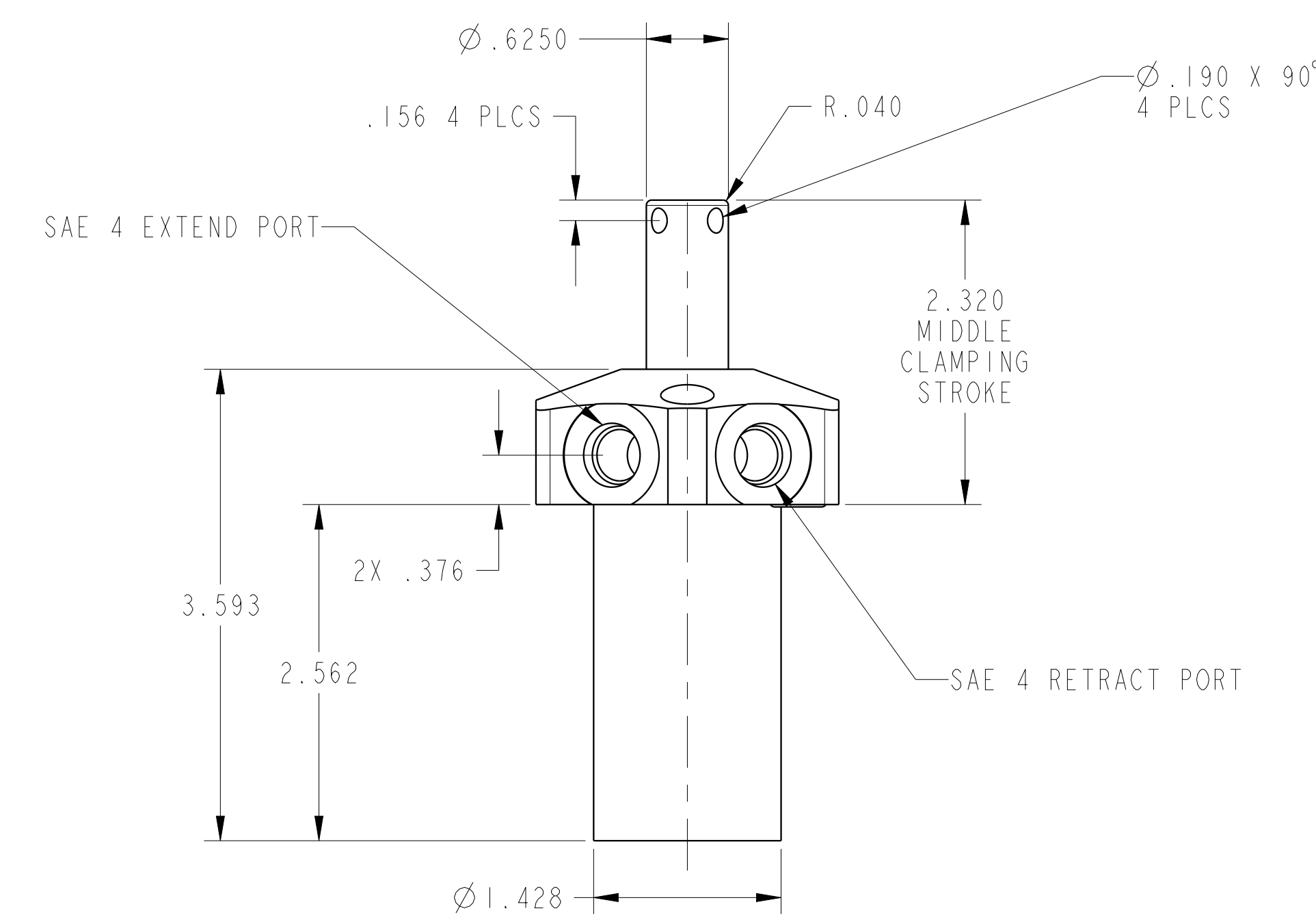
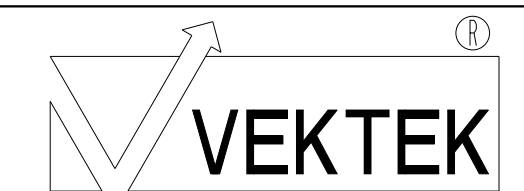


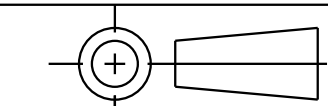
1LC25620900 REVA ECN4454



CAD CONTROL DRAWING



VEKTEK, INC.
1334 E. SIXTH AVE. P.O. BOX 625
EMPORIA, KS. 66801 U.S.A.



A	4454	RELEASE	ALS	5/25/21	25620900	A	CYL, PP, TF, 3000/1400
REV	IN ACCORDANCE WITH ECN	EFFECTIVE DATE	REVISED BY	DATE	REFERENCE MODEL	REF REV	
DRW BY:	ALS	DRAWING STATUS: Released			TOLERANCES DO NOT APPLY DIMENSIONS ARE NOMINAL		SIZE D
DATE:	5/25/21	PRODUCTION APPROVED FOR RELEASED STATUS ONLY			1LC25620900	REV A	