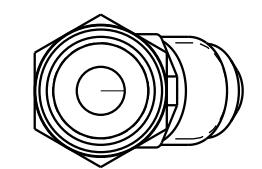
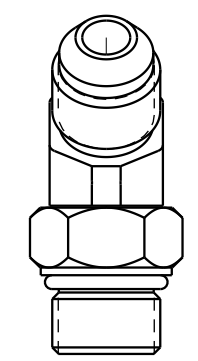
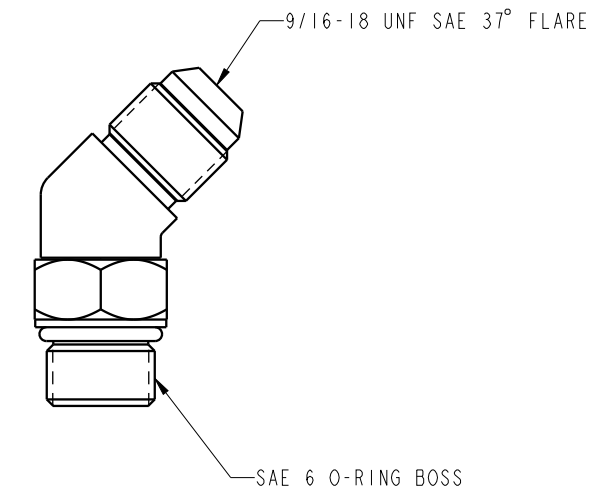
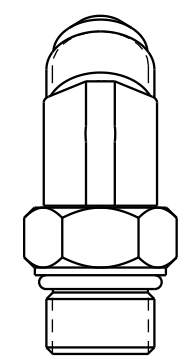

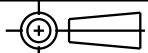


ILC30151566 REV A ECN 4756



<b>CAD CONTROL DRAWING</b>		 VEKTEK, INC. 1334 E. SIXTH AVE. P.O. BOX 625 EMPORIA, KS. 66801 U.S.A.	
			

B	4756	RELEASE	RLK	9/6/22	30151566	B	ELBOW, -6,M,JIC,45DEG/ADJ X -6,M,ORB
REV	IN ACCORDANCE WITH ECN	EFFECTIVE DATE	REVISED BY	DATE	REFERENCE MODEL	REF REV	
DRW BY:	RLK	<b>DRAWING STATUS: Released</b>			TOLERANCES DO NOT APPLY DIMENSIONS ARE NOMINAL		SIZE B
DATE:	9/6/22	PRODUCTION APPROVED FOR RELEASED STATUS ONLY					ILC30151566 REV B

FORM FEG036, Rev. B

SHEET 1 OF 1