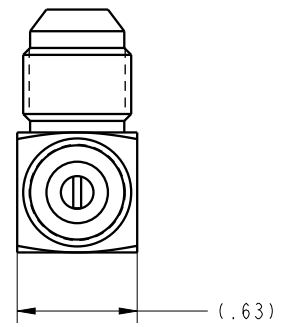
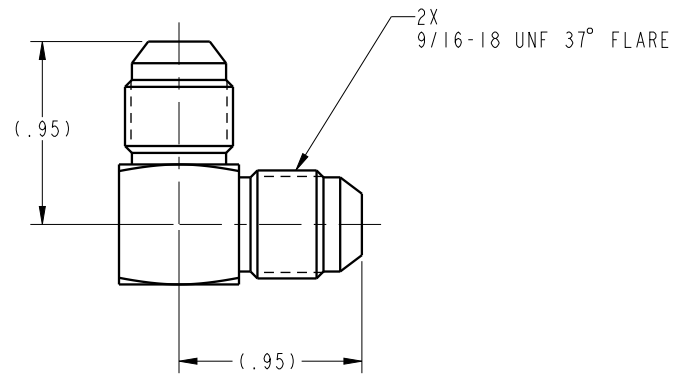
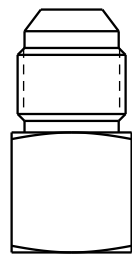


ILC30165566 REV A ECN 4492



**CAD CONTROL  
DRAWING**



VEKTEK, INC.  
1334 E. SIXTH AVE. P.O. BOX 625  
EMPORIA, KS. 66801 U.S.A.

A	4492	RELEASE	RLK	6/23/22	30165566	A	ELBOW, -6,M,JIC,90DEG/UNION X -6,M,JIC
REV	IN ACCORDANCE WITH ECN	EFFECTIVE DATE	REVISED BY	DATE	REFERENCE MODEL	REF REV	
DRW BY:	RLK	<b>DRAWING STATUS: Released</b>			TOLERANCES DO NOT APPLY	SIZE	ILC30165566
DATE:	6/23/22	PRODUCTION APPROVED FOR RELEASED STATUS ONLY			DIMENSIONS ARE NOMINAL	B	REV A

FORM FEG036, Rev. B

SHEET 1 OF 1