

1

2

3

4

D

D

C

C

B

B

A

A

1

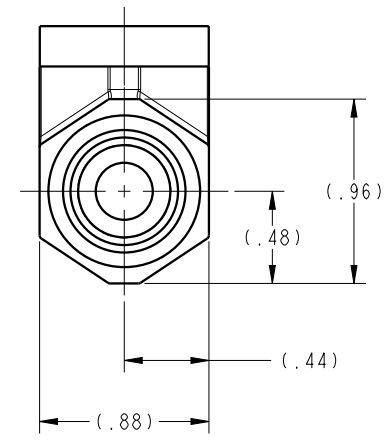
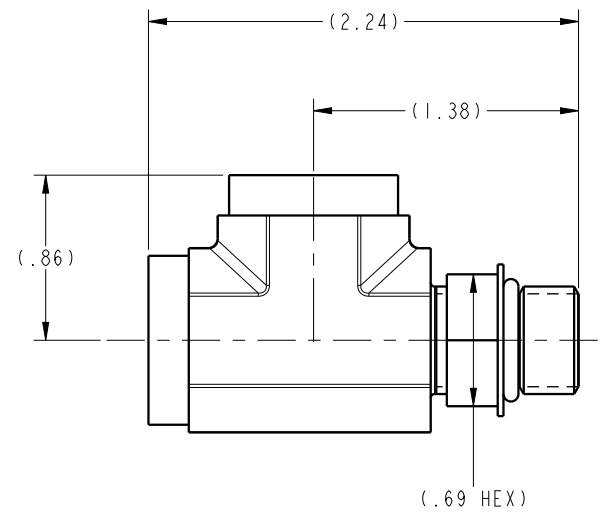
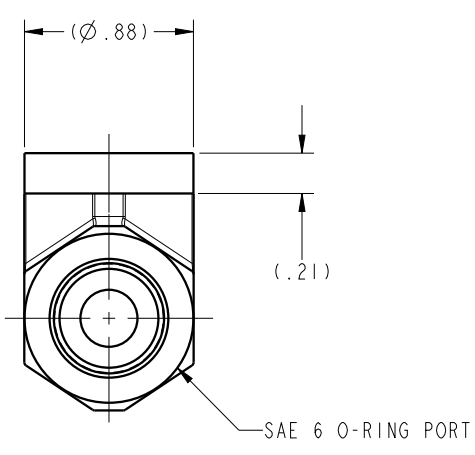
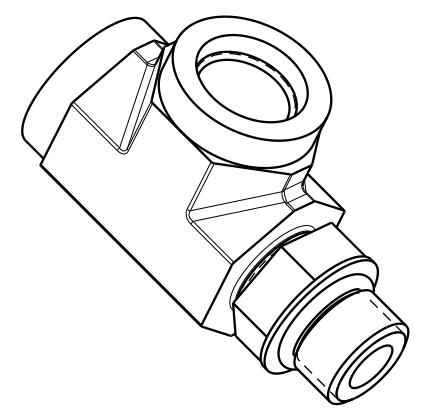
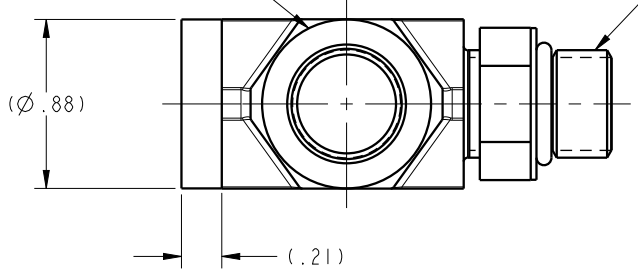
2

3

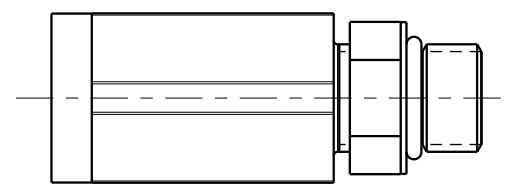
4

SAE 6 O-RING PORT

SAE 6 O-RING BOSS SWIVEL END



ILC30231266 REV A ECN 3103



CAD CONTROL DRAWING



VEKTEK, INC.  
1334 E. SIXTH AVE. P.O. BOX 625  
EMPORIA, KS. 66801 U.S.A.

A	3103	RELEASE	JDW	10/26/16
REV	IN ACCORDANCE WITH ECN	EFFECTIVE DATE	REVISED BY	DATE
DRW BY:	JDW	<b>DRAWING STATUS: Released</b>		
DATE:	10/26/16	PRODUCTION APPROVED FOR RELEASED STATUS ONLY		

30231266	A
REFERENCE MODEL	REF REV

FITTING, TEE, RUN, SAE 6

TOLERANCES DO NOT APPLY  
DIMENSIONS ARE NOMINAL

SIZE B ILC30231266 REV A

FORM FEG036, Rev. B

SHEET 1 OF 1