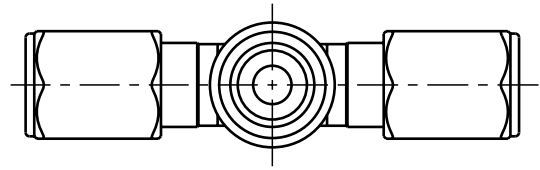
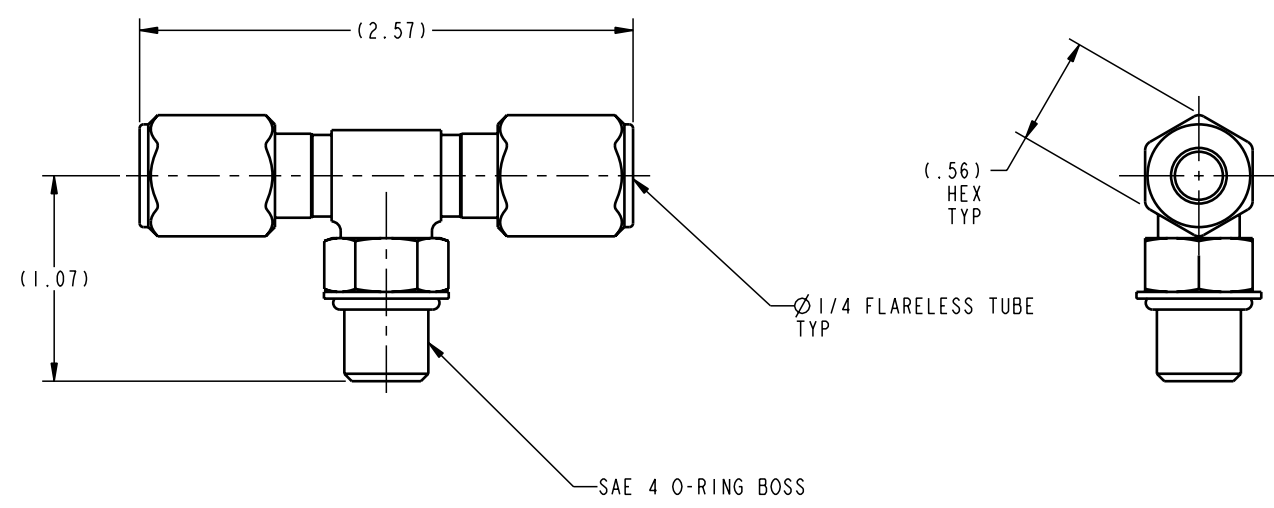




ILC30241044 REV A ECN 1364



<b>CAD CONTROL DRAWING</b>		 VEKTEK, INC. 1334 E. SIXTH AVE. P.O. BOX 625 EMPORIA, KS. 66801 U.S.A.	
			

A	1364	RELEASE	K. ROEMER	08-08-05	30241044	D	FITTING, TEE, BRANCH, SAE 4-1/4 TUBE	
REV	IN ACCORDANCE WITH ECN	EFFECTIVE DATE	REVISED BY	DATE	REFERENCE MODEL	REF REV	*****	
DRW BY:	K. ROEMER	DRAWING STATUS: <b>Released</b>			TOLERANCES DO NOT APPLY		SIZE	
DATE:	08-08-05	PRODUCTION APPROVED FOR RELEASED STATUS ONLY			DIMENSIONS ARE NOMINAL		B	
							ILC30241044	REV
							FORM FEG036, Rev. A	A

SHEET 1 OF 1