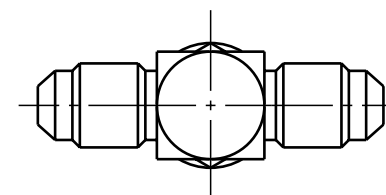
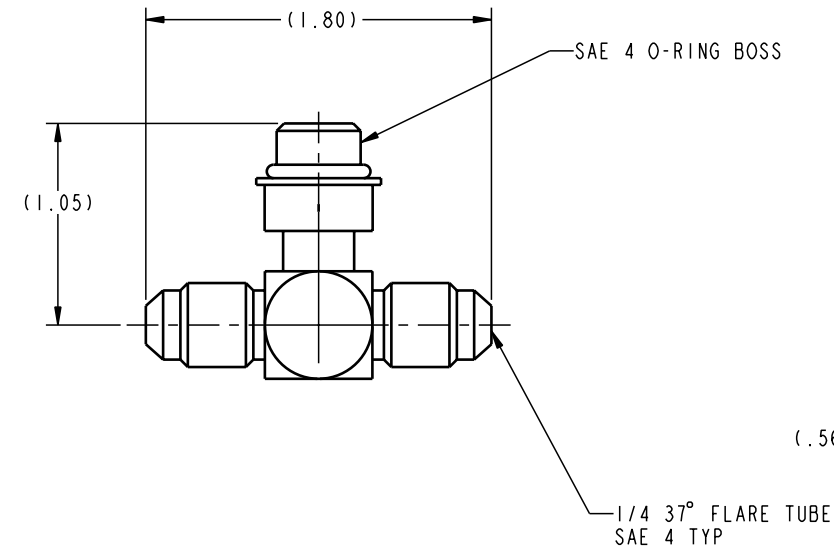
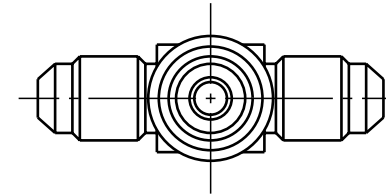


ILC30241544 REV A ECN 1368



**CAD CONTROL
DRAWING**



VEKTEK, INC.
1334 E. SIXTH AVE. P.O. BOX 625
EMPORIA, KS. 66801 U.S.A.

A	1368	RELEASE	K. ROEMER	08-10-05	30241544	C	FITTING, TEE, BRANCH, 1/4 37° FLARE - SAE 4
REV	IN ACCORDANCE WITH ECN	EFFECTIVE DATE	REVISED BY	DATE	REFERENCE MODEL	REF REV	*****
DRW BY:	K. ROEMER	DRAWING STATUS: Released			TOLERANCES DO NOT APPLY DIMENSIONS ARE NOMINAL		SIZE B
DATE:	08-10-05	PRODUCTION APPROVED FOR RELEASED STATUS ONLY					ILC30241544 REV A

FORM FEG036, Rev. A

SHEET 1 OF 1