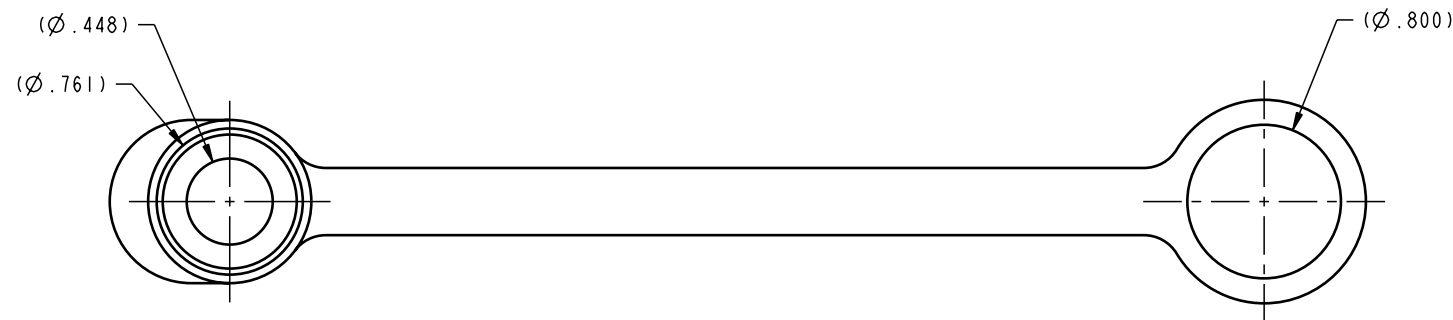
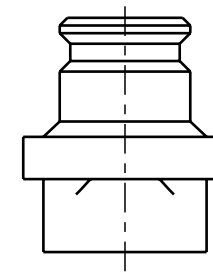
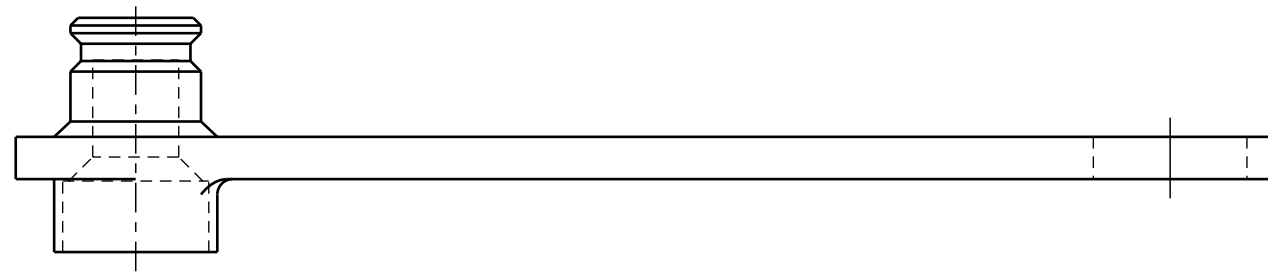


ILC30719706 REV A ECN 1373



CAD CONTROL  
DRAWING



VEKTEK, INC.  
1334 E. SIXTH AVE. P.O. BOX 625  
EMPORIA, KS. 66801 U.S.A.

A	1373	RELEASE	K. ROEMER	08-16-05	30719706	D	COVER, DUST, SAE 6, OD
REV	IN ACCORDANCE WITH ECN	EFFECTIVE DATE	REVISED BY	DATE	REFERENCE MODEL	REF REV	*****
DRW BY:	K. ROEMER	DRAWING STATUS: <b>Released</b>			TOLERANCES DO NOT APPLY	SIZE	ILC30719706
DATE:	08-16-05	PRODUCTION APPROVED FOR RELEASED STATUS ONLY			DIMENSIONS ARE NOMINAL	B	REV A

FORM FEG036, Rev. A

SHEET 1 OF 1