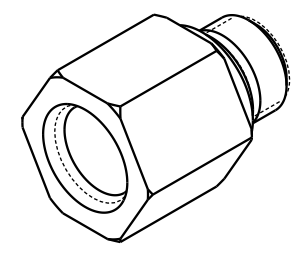


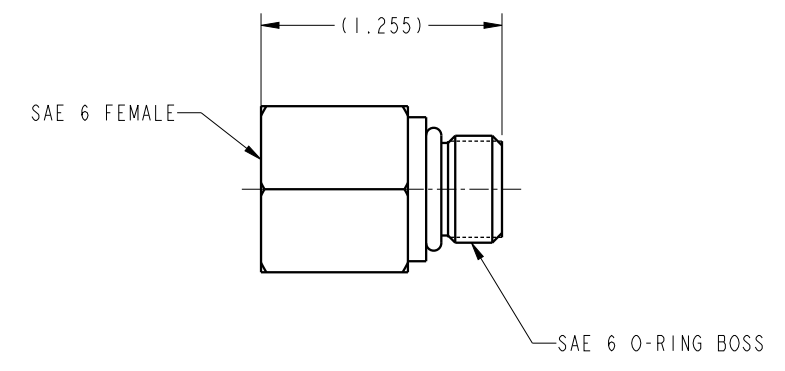
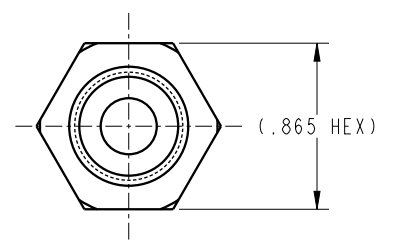
1 2 3 4

D  
C  
B  
A

D  
C  
B  
A



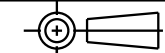
ILC30791266 REV A ECN 3190



**CAD CONTROL  
DRAWING**



VEKTEK, INC.  
1334 E. SIXTH AVE. P.O. BOX 625  
EMPORIA, KS. 66801 U.S.A.



A	5147	RELEASE	RLK	8/6/23	30791266	A	FITTING, SAE 6, MALE- FEMALE		
REV	IN ACCORDANCE WITH ECN	EFFECTIVE DATE	REVISED BY	DATE	REFERENCE MODEL	REF REV			
DRW BY:	MAJ	DRAWING STATUS: Released			TOLERANCES DO NOT APPLY DIMENSIONS ARE NOMINAL		SIZE B	ILC30791266	REV A
DATE:	2-10-17	PRODUCTION APPROVED FOR RELEASED STATUS ONLY							

FORM FEG036, Rev. B

SHEET 1 OF 1