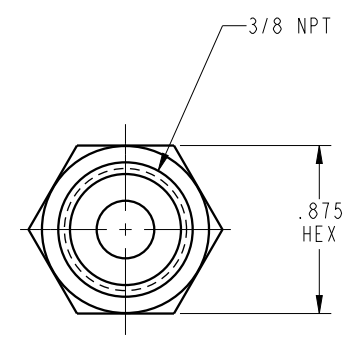
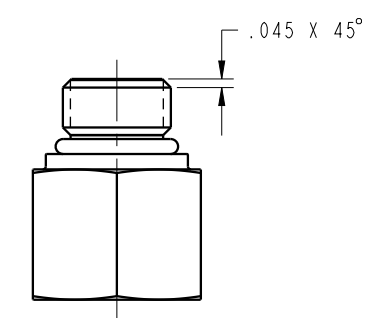
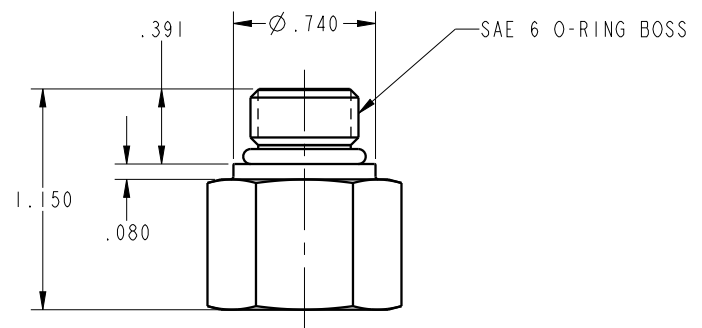


ILC30801466 REV B ECN 3353



|                                |   |  |
|--------------------------------|---|--|
| <b>CAD CONTROL<br/>DRAWING</b> |   |  |
|                                | <small>VEKTEK, INC.<br/>1334 E. SIXTH AVE. P.O. BOX 625<br/>EMPORIA, KS. 66801 U.S.A.</small> |  |

|         |                        |  |            |          |   |         |  |
|---------|------------------------|--|------------|----------|---|---------|--|
| B       | 3353                   | RELEASE                                      | JDW        | 12/11/17 | 30801466  | D       | FITTING, ADAPTER, MALE SAE 6-FEM 3/8 NPT |
| REV     | IN ACCORDANCE WITH ECN | EFFECTIVE DATE                               | REVISED BY | DATE     | REFERENCE MODEL                                   | REF REV |  |
| DRW BY: | K. ROEMER              | <b>DRAWING STATUS: Released</b>              |            |          | TOLERANCES DO NOT APPLY<br>DIMENSIONS ARE NOMINAL |         | SIZE B                                   |
| DATE:   | 08-15-05               | PRODUCTION APPROVED FOR RELEASED STATUS ONLY |            |          | ILC30801466                                       |         | REV B                                    |

FORM FEG036, Rev. B

SHEET 1 OF 1