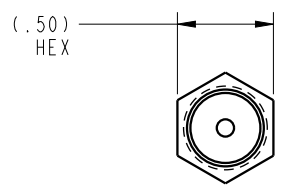
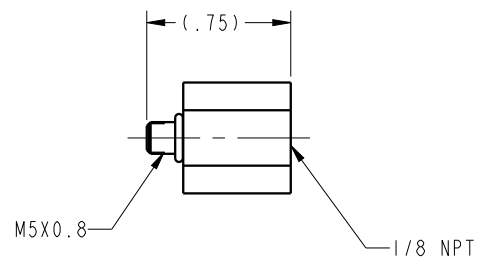

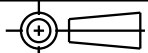


ILC30808432 REV A ECN 4492



CAD CONTROL DRAWING		 VEKTEK, INC. 1334 E. SIXTH AVE. P.O. BOX 625 EMPORIA, KS. 66801 U.S.A.	
			

A	4492	RELEASE	RLK	6/24/22	30808432	A	M5x0.8, M X 1/8, F, NPT	
REV	IN ACCORDANCE WITH ECN	EFFECTIVE DATE	REVISED BY	DATE	REFERENCE MODEL	REF REV		
DRW BY:	RLK	DRAWING STATUS: Released			TOLERANCES DO NOT APPLY		SIZE	
DATE:	6/24/22	PRODUCTION APPROVED FOR RELEASED STATUS ONLY			DIMENSIONS ARE NOMINAL		B	
							ILC30808432	REV A
							FORM FEG036, Rev. B	

SHEET 1 OF 1