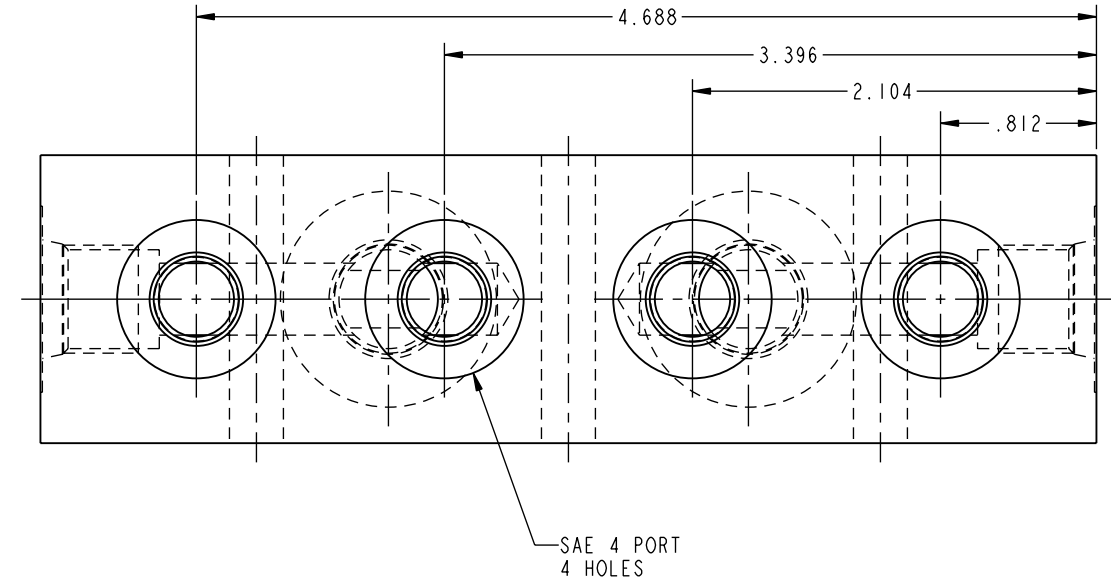
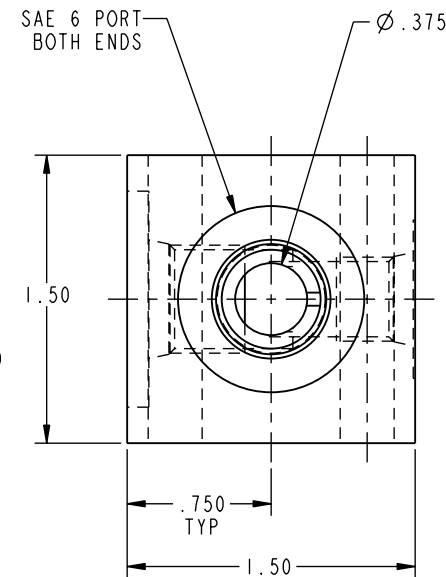
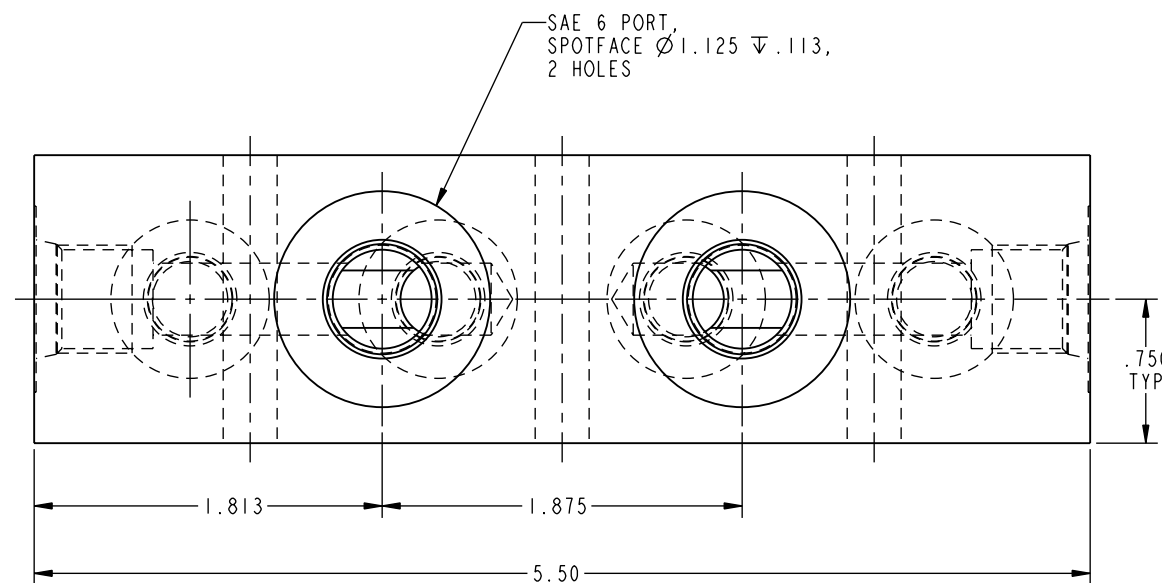


ILC31426424 REV B ECN 2369

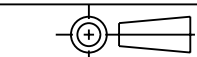


CAD CONTROL DRAWING



VEKTEK, INC.
1334 E. SIXTH AVE. P.O. BOX 625
EMPORIA, KS. 66801 U.S.A.

B	2369	RELEASE	JDW	2/15/12	31426424	F	MANIFOLD, RECT, DUAL, SAE 6-6-4
REV	IN ACCORDANCE WITH ECN	EFFECTIVE DATE	REVISED BY	DATE	REFERENCE MODEL	REF REV	
DRW BY:	K. ROEMER	DRAWING STATUS: Released			TOLERANCES DO NOT APPLY DIMENSIONS ARE NOMINAL		SIZE B
DATE:	11-20-02	PRODUCTION APPROVED FOR RELEASED STATUS ONLY			ILC31426424		REV B



FORM FEG036, Rev. A

SHEET 1 OF 1