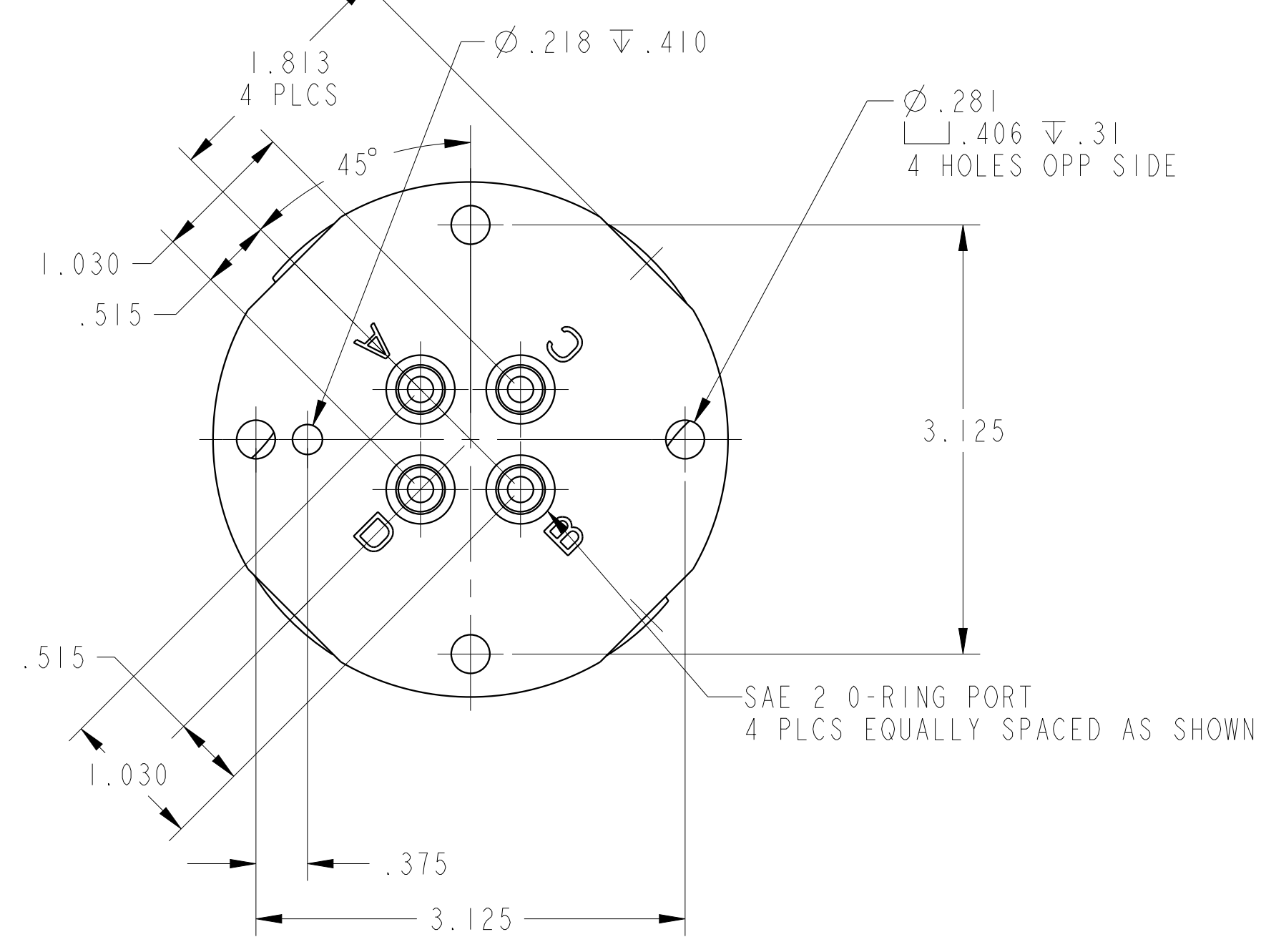
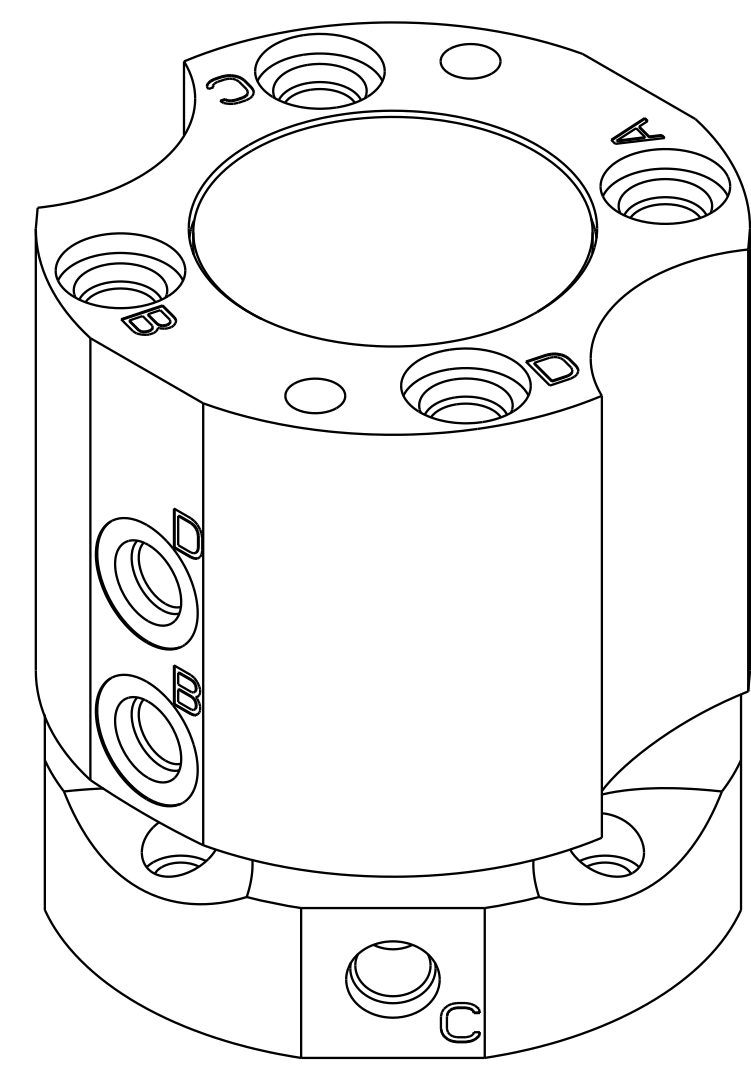
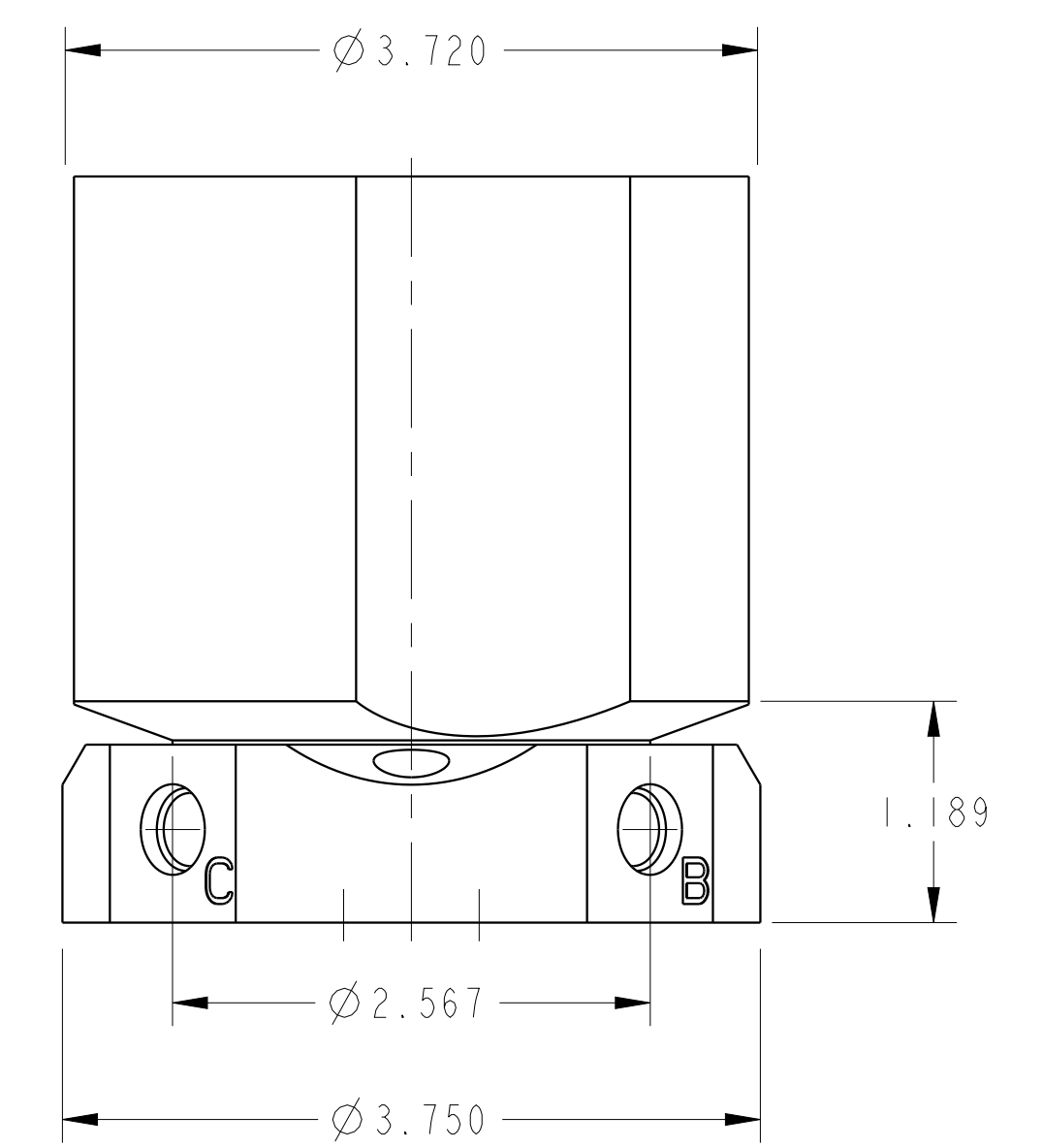
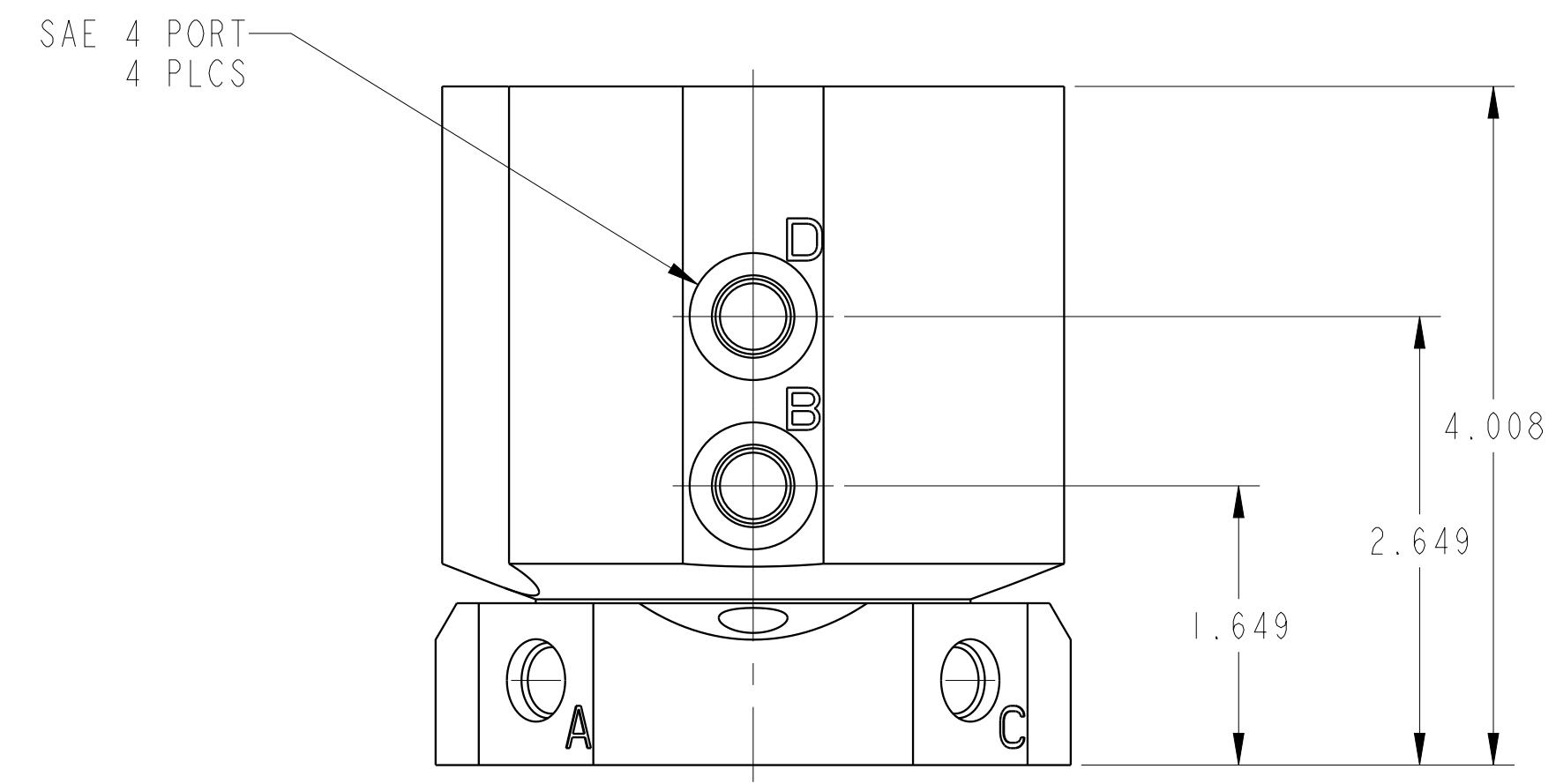
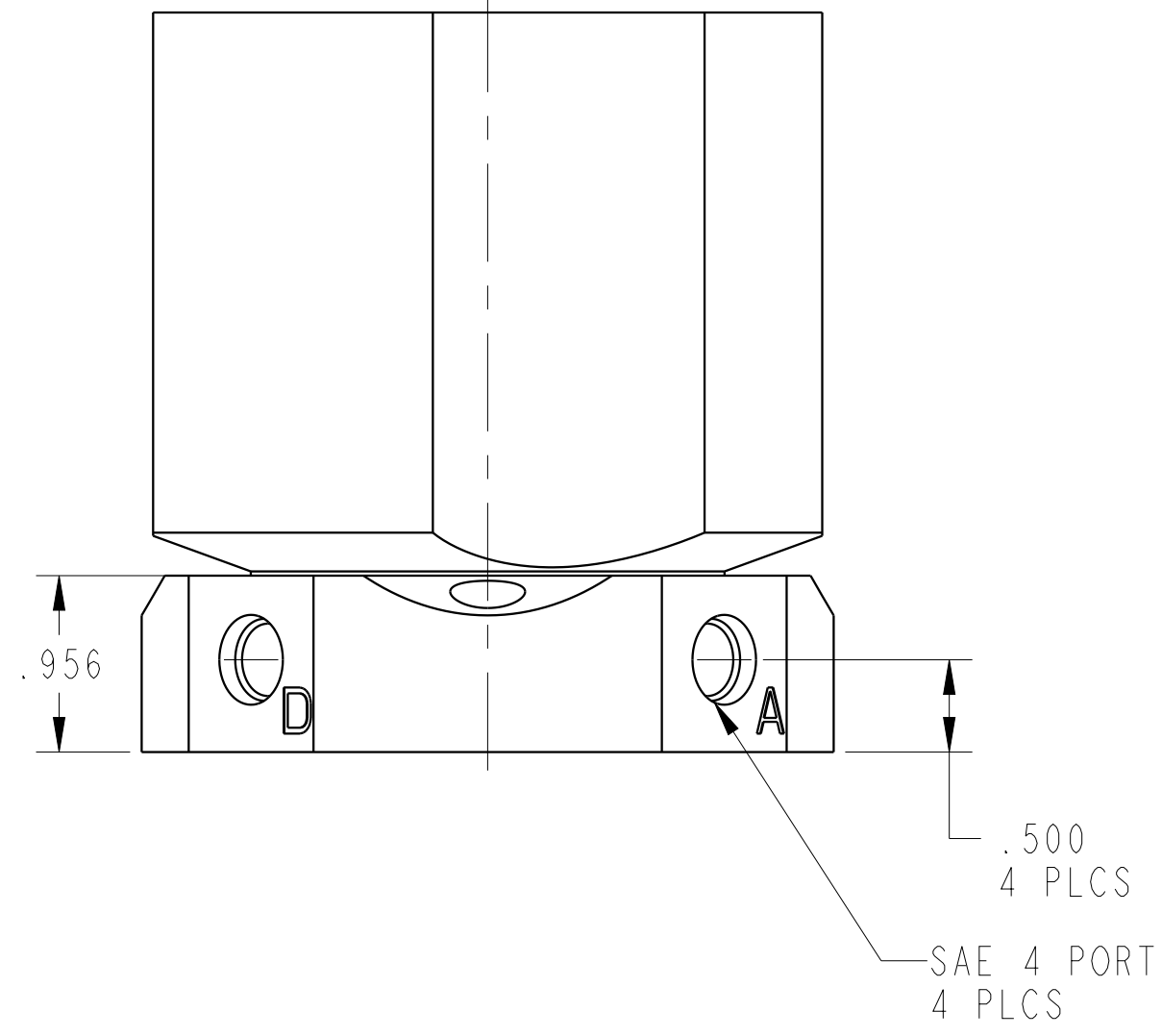
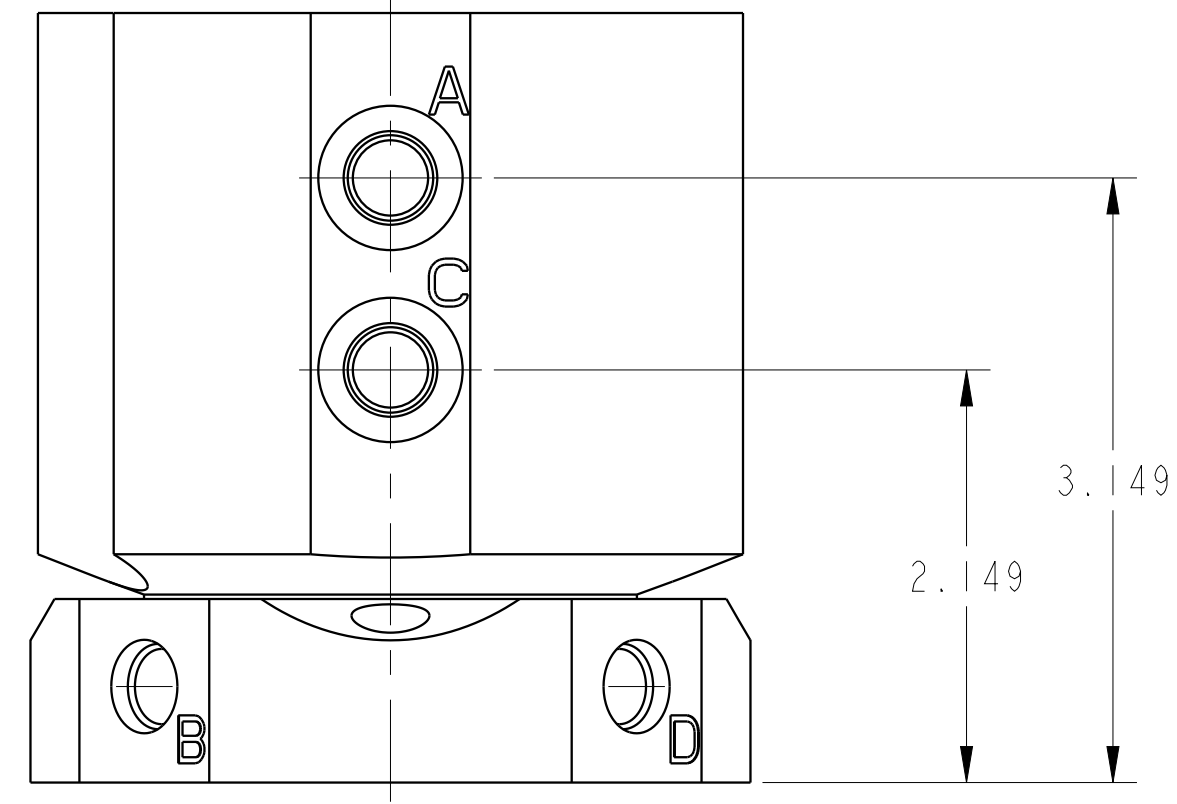
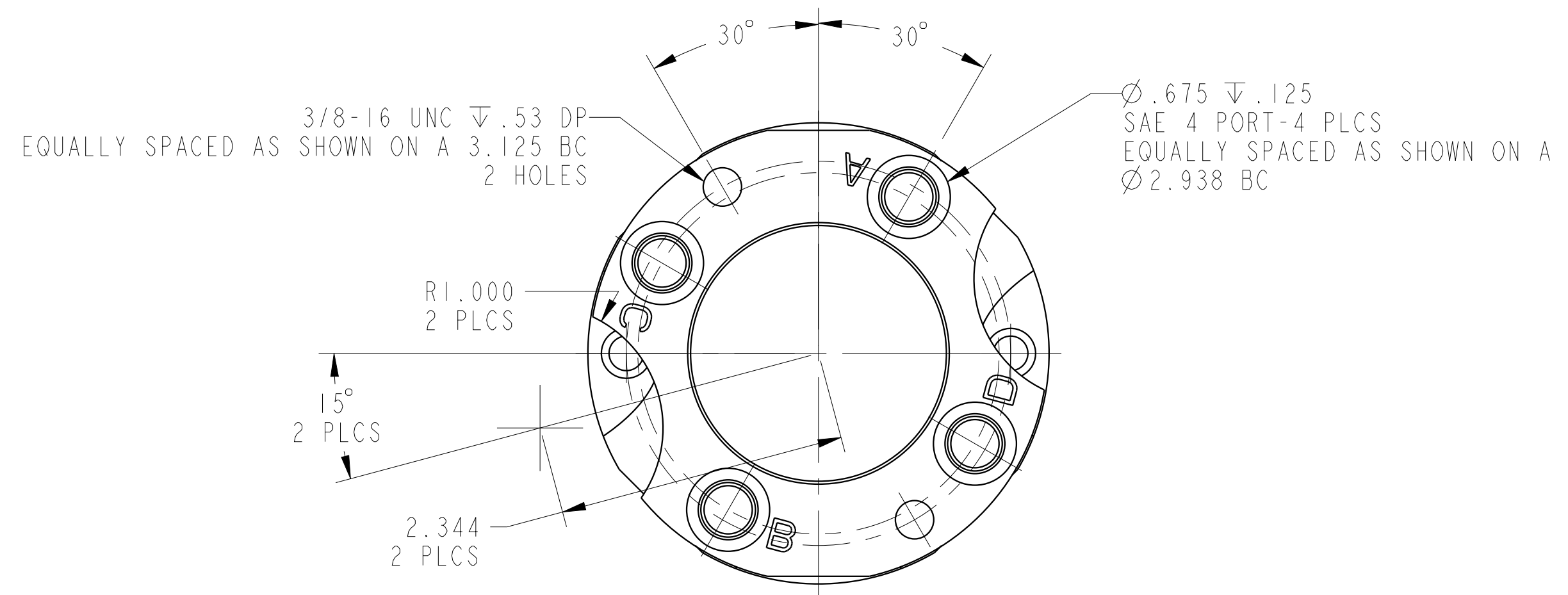


1

2

3

4



ILC32424401 REV A ECN 5033

CAD CONTROL DRAWING			VEKTEK, INC.	
			1334 E. SIXTH AVE. P.O. BOX 625 EMPORIA, KS. 66801 U.S.A.	
		RU, QP, SAE 2/4		REV B

B	5033	RELEASE	JDW	02/15/23	32424401	F	RU, QP, SAE 2/4
REV	IN ACCORDANCE WITH ECN	EFFECTIVE DATE	REVISED BY	DATE	REFERENCE MODEL	REF REV	
DRW BY:	DLG	DRAWING STATUS: Released			TOLERANCES DO NOT APPLY		
DATE:	3/3/17	PRODUCTION APPROVED FOR RELEASED STATUS ONLY			DIMENSIONS ARE NOMINAL		

SIZE D ILC32424401

FORM FEG036, Rev. B

1

2

3

4

SHEET 1 OF 1