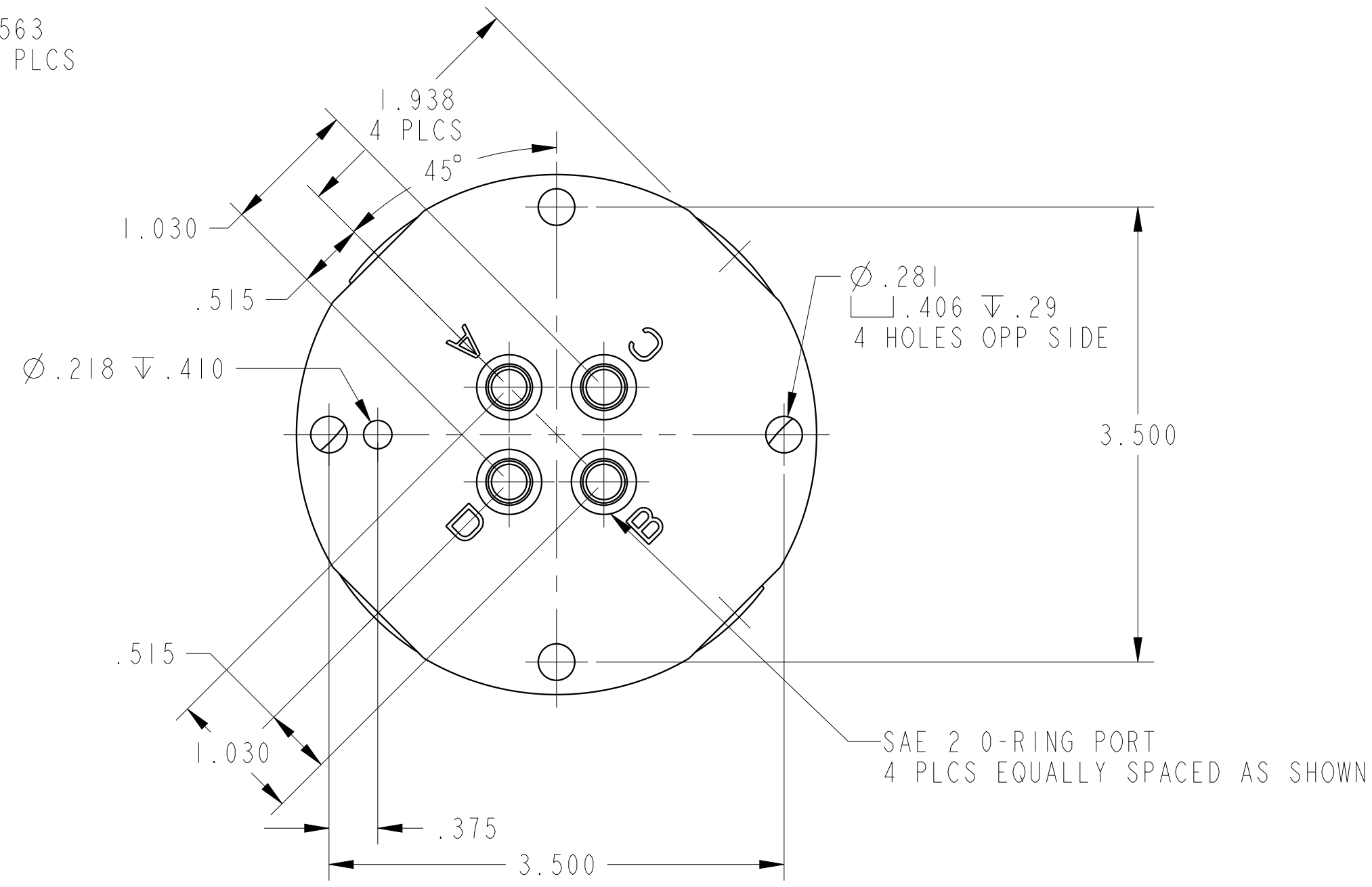
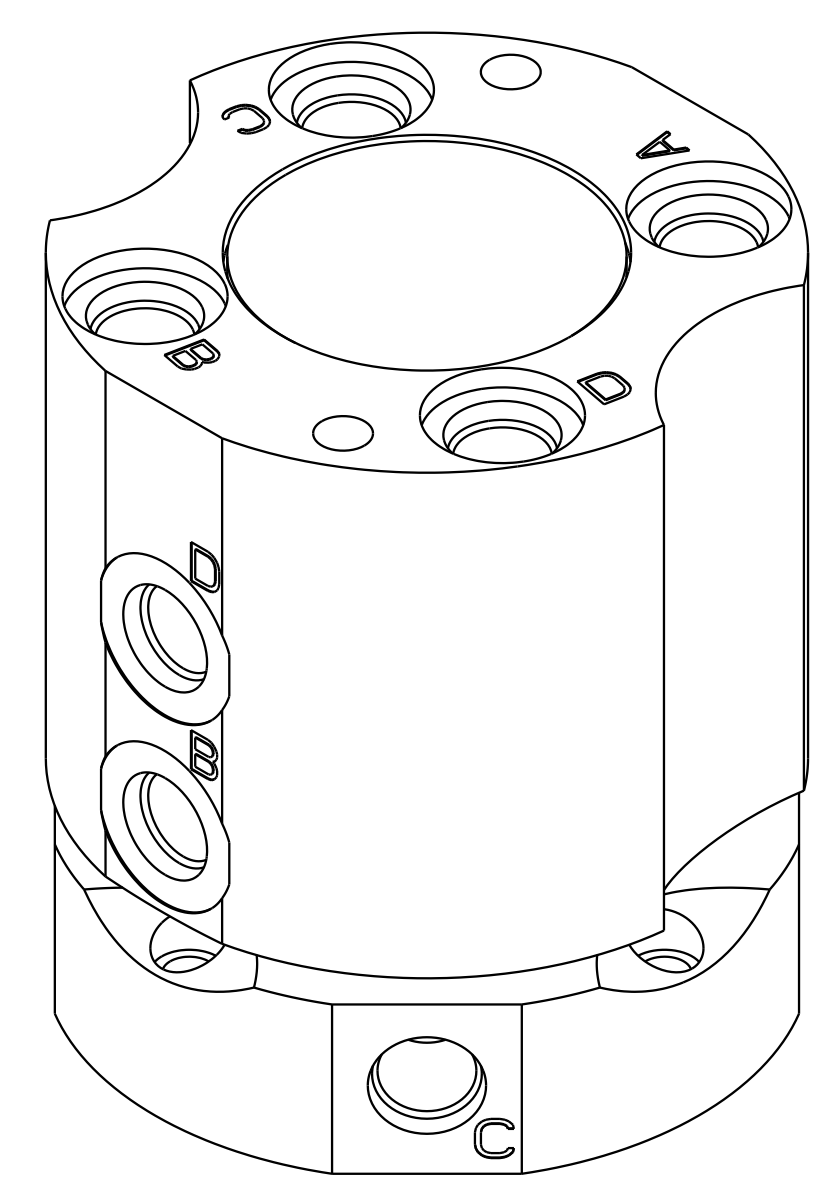
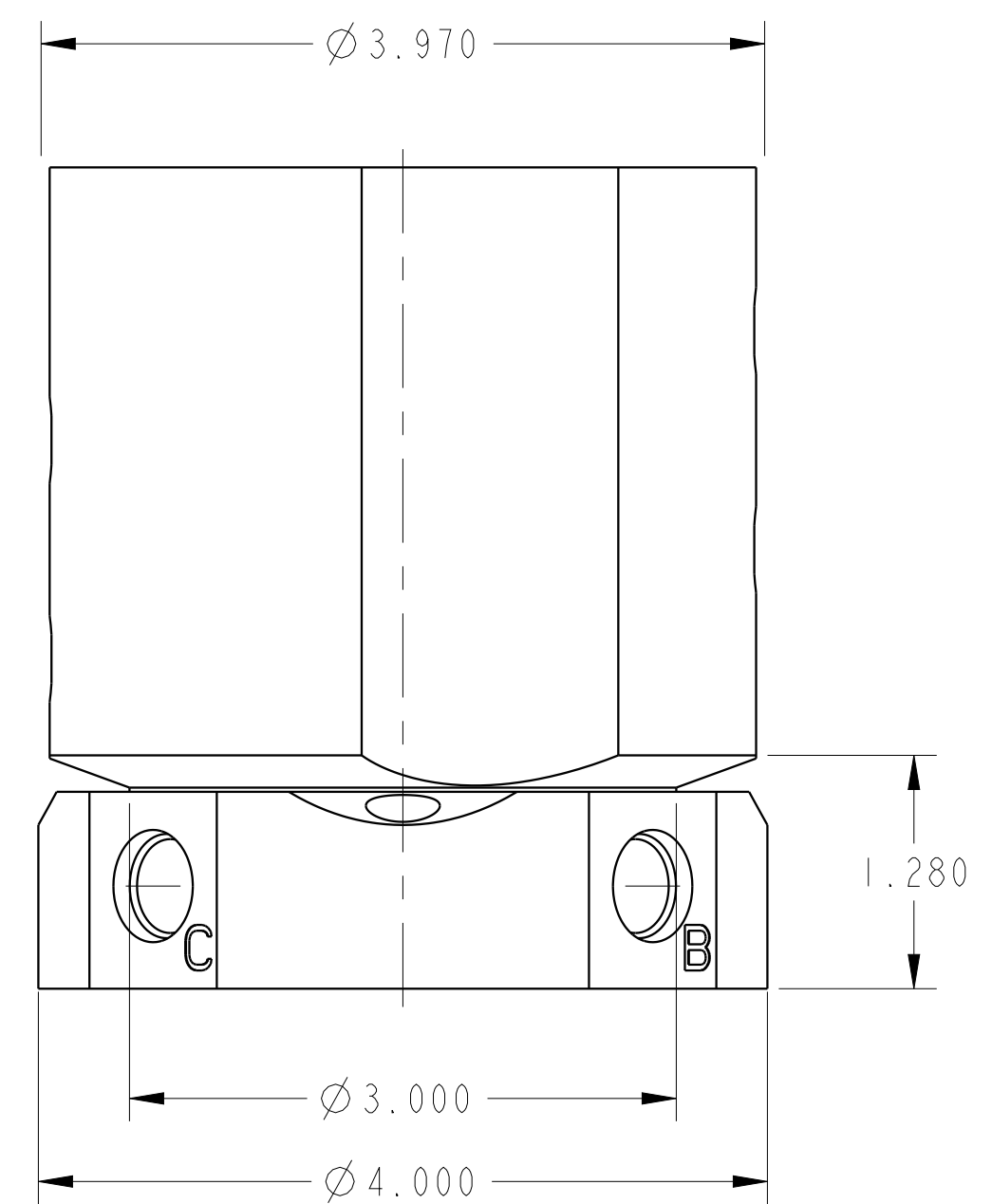
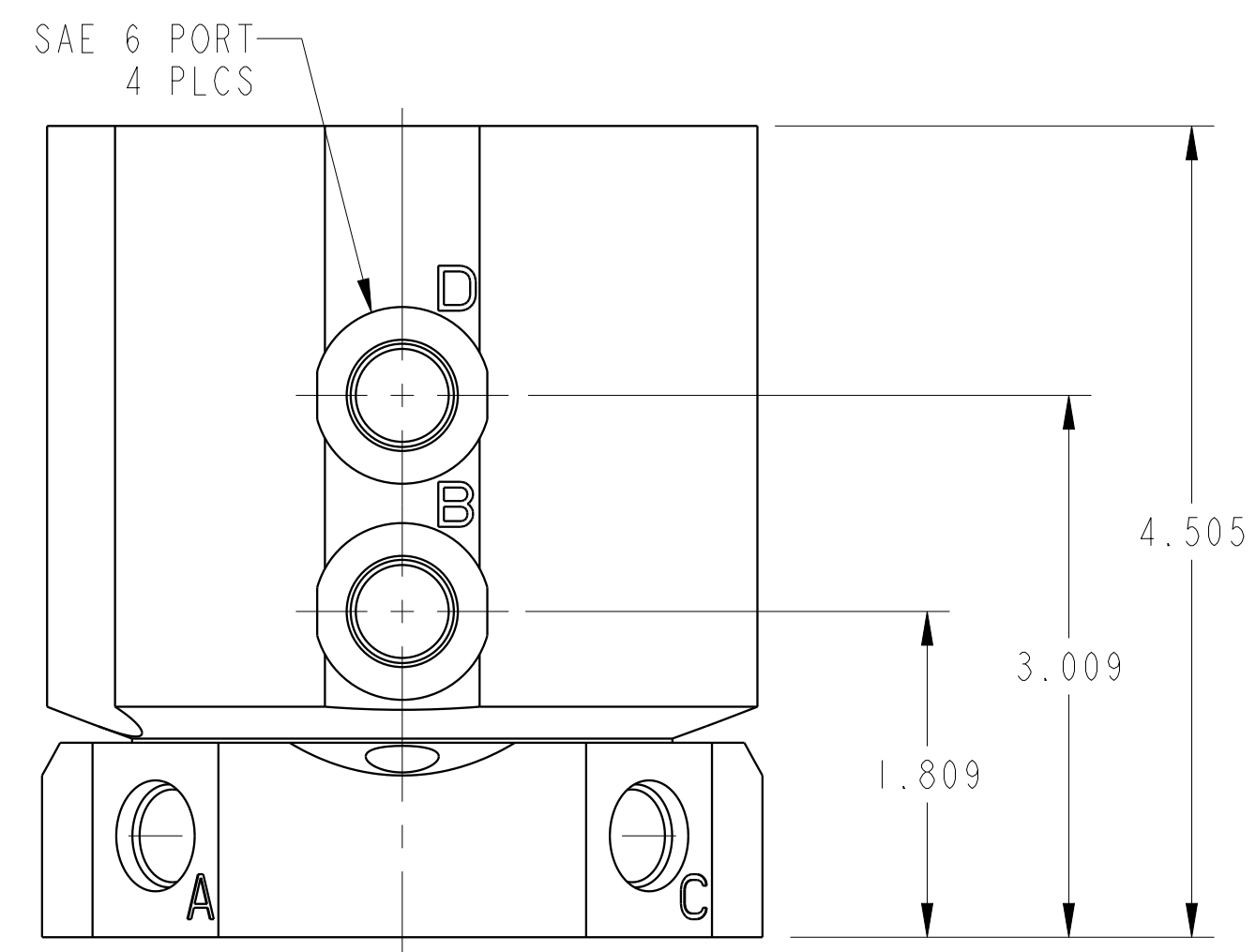
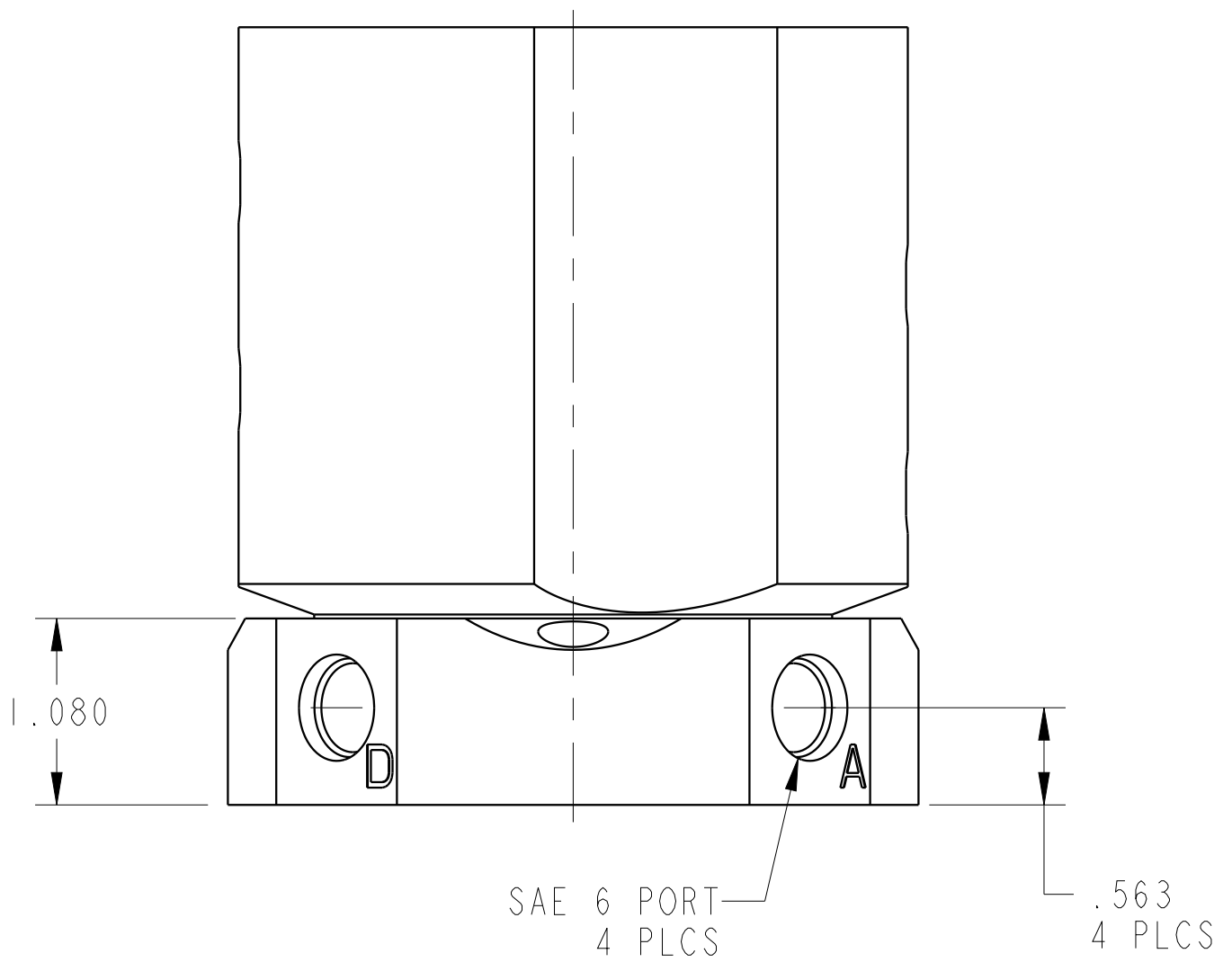
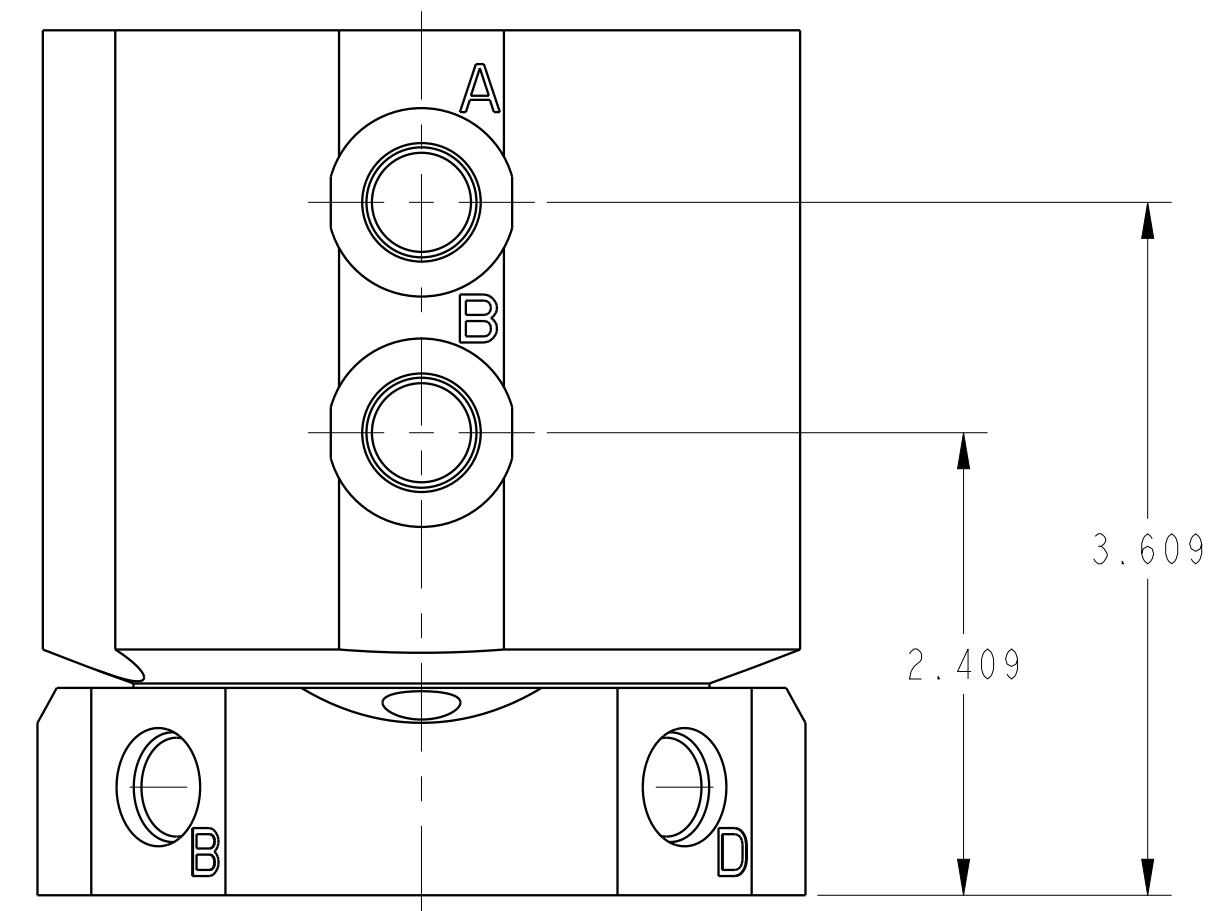
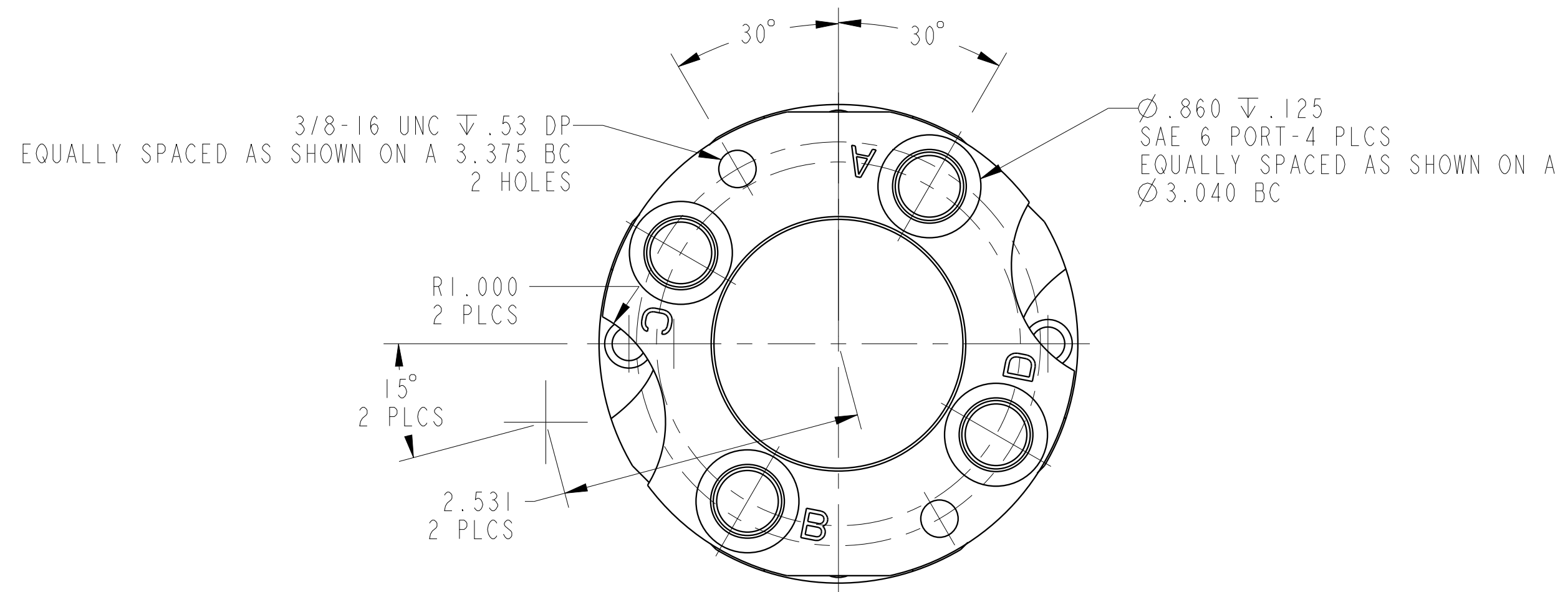


1

2

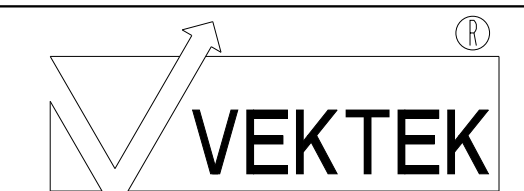
3

4



ILC32426401 REV A ECN 5033

CAD CONTROL DRAWING



VEKTEK, INC.
1334 E. SIXTH AVE. P.O. BOX 625
EMPORIA, KS. 66801 U.S.A.

B	5033	RELEASE	JDW	02/15/23
REV	IN ACCORDANCE WITH ECN	EFFECTIVE DATE	REVISED BY	DATE
DRW BY:	DLG	DRAWING STATUS: Released		
DATE:	3/3/17	PRODUCTION APPROVED FOR RELEASED STATUS ONLY		

32426401	F	RU, QP, SAE 2/6
REFERENCE MODEL	REF REV	
TOLERANCES DO NOT APPLY		SIZE
DIMENSIONS ARE NOMINAL		D

ILC32426401	REV B
FORM FEG036, Rev. B	

1

2

3

4

SHEET 1 OF 1