

1

2

3

4

D

D

C

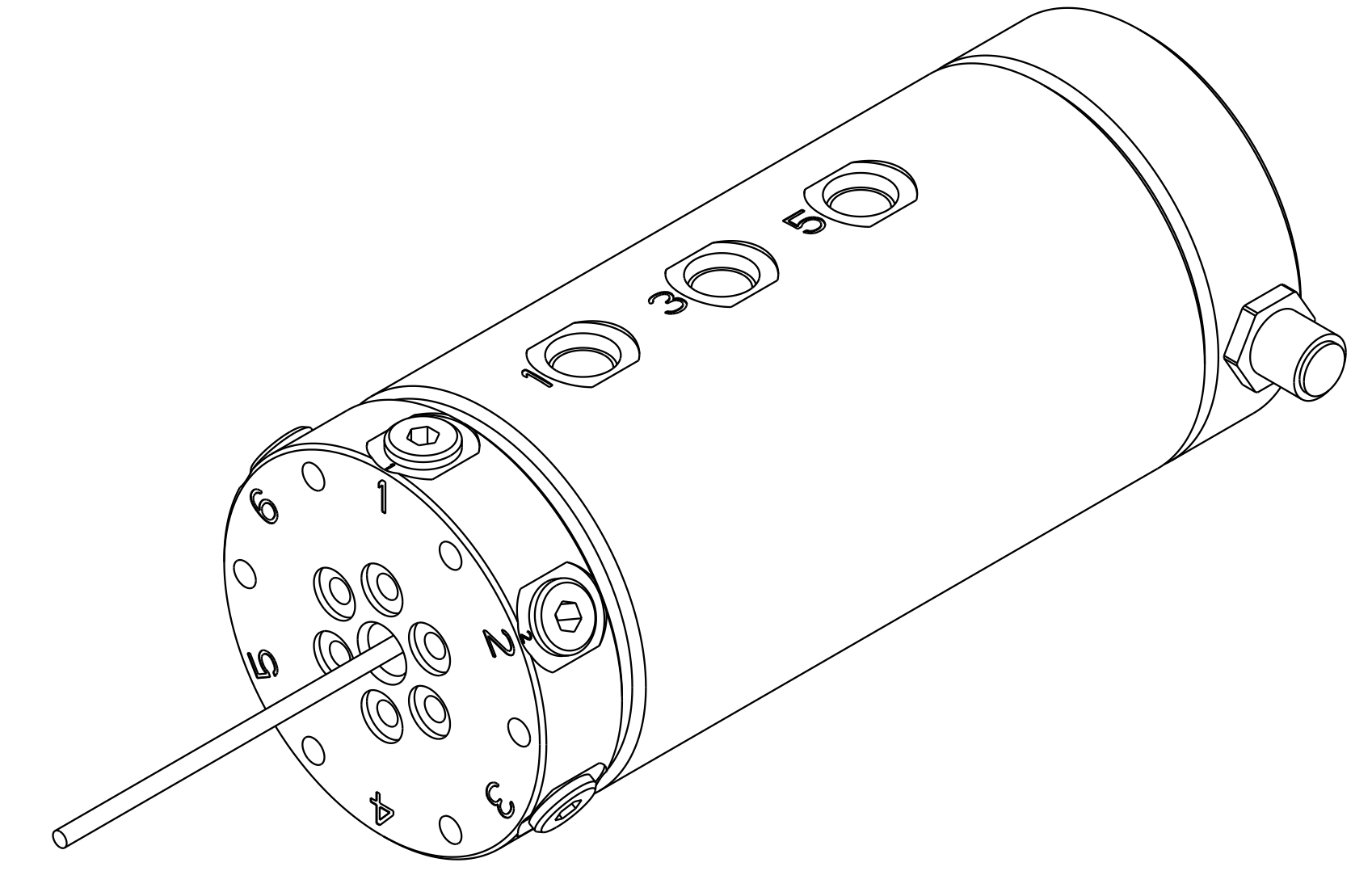
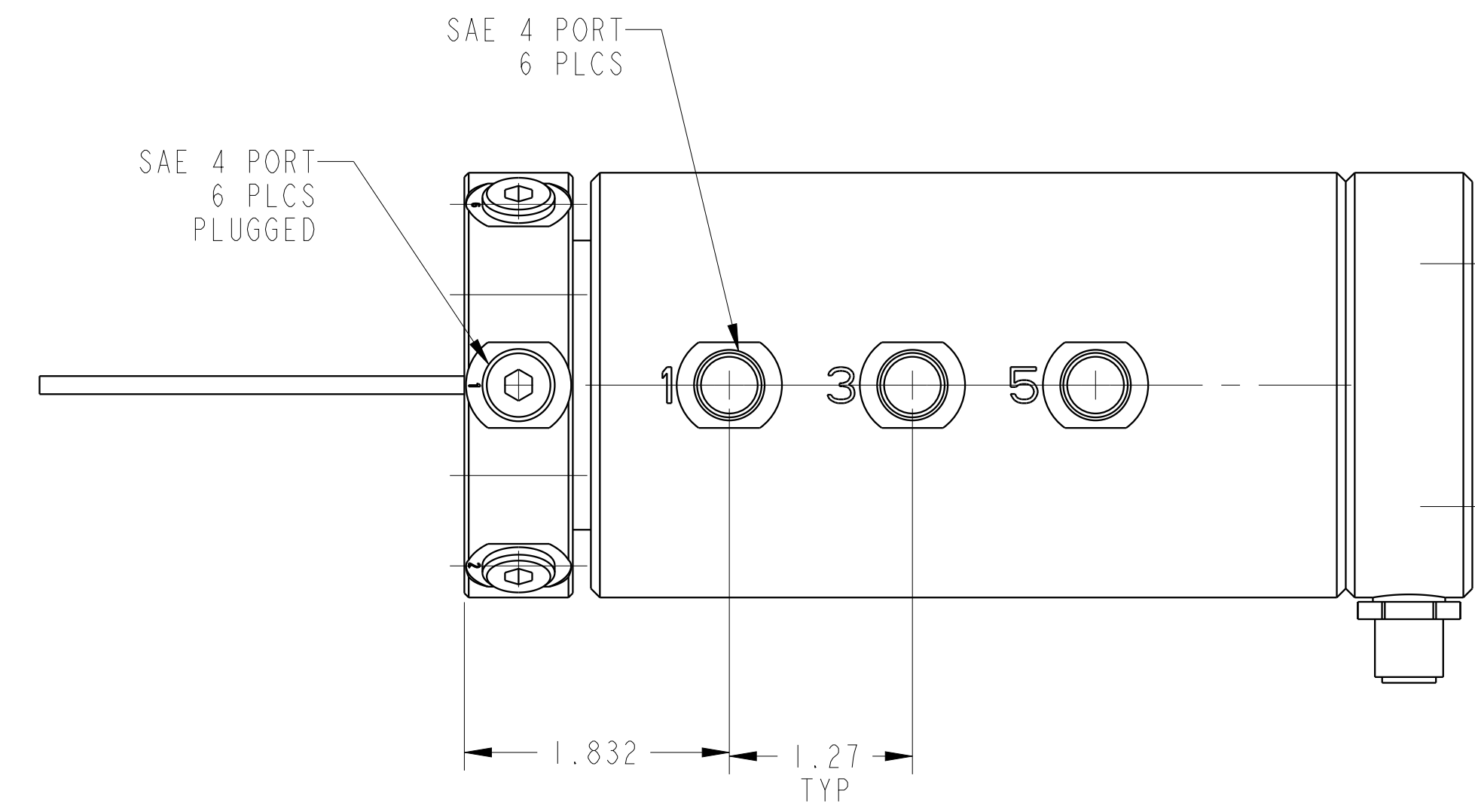
C

B

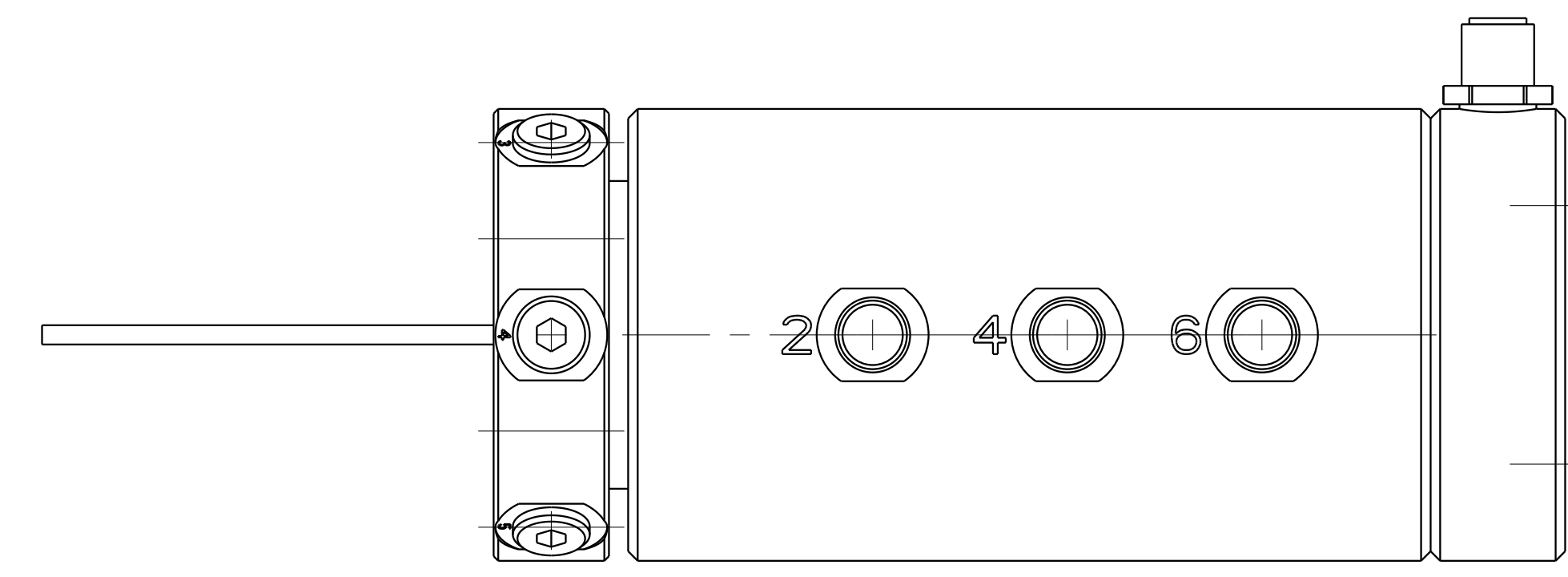
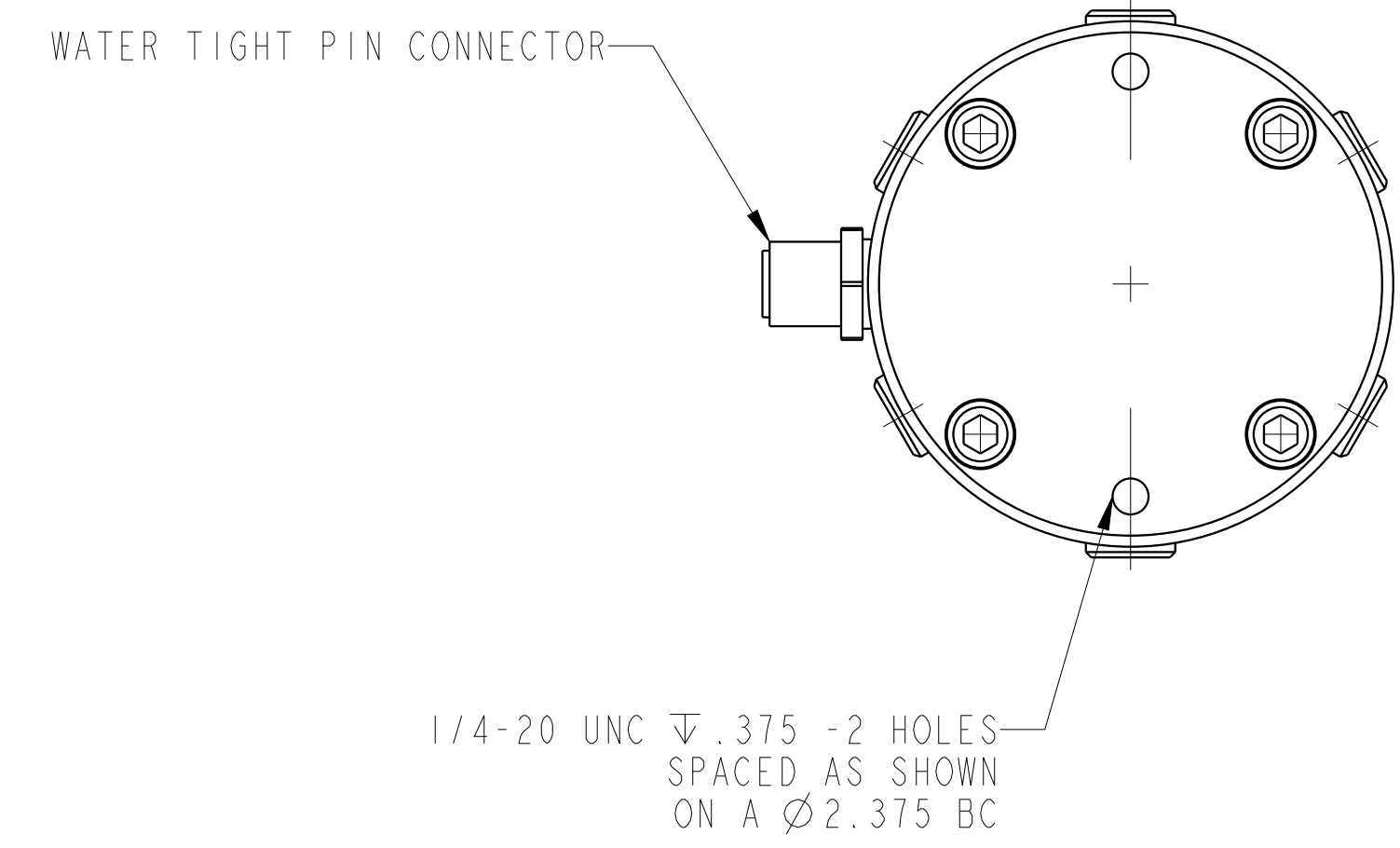
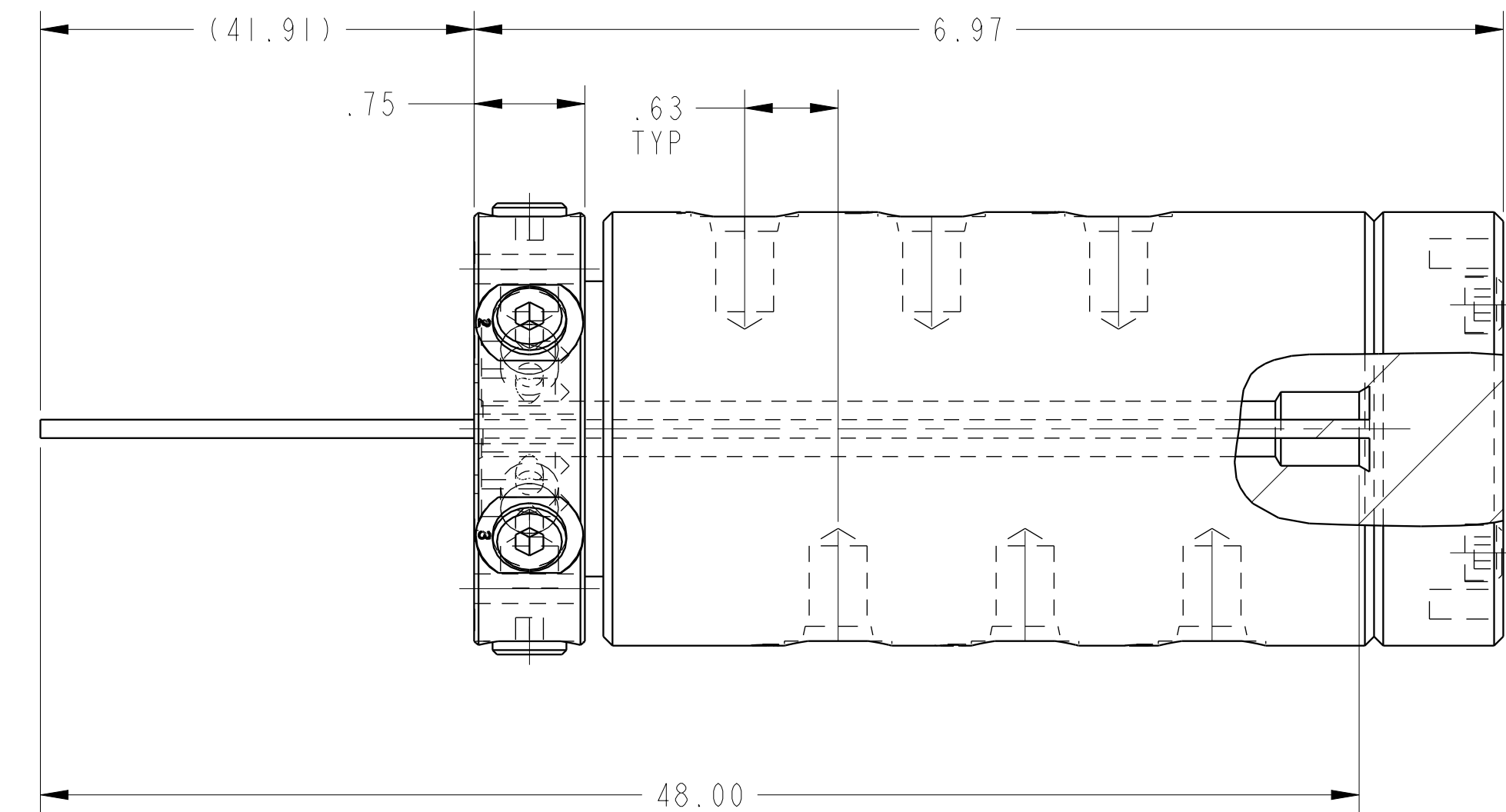
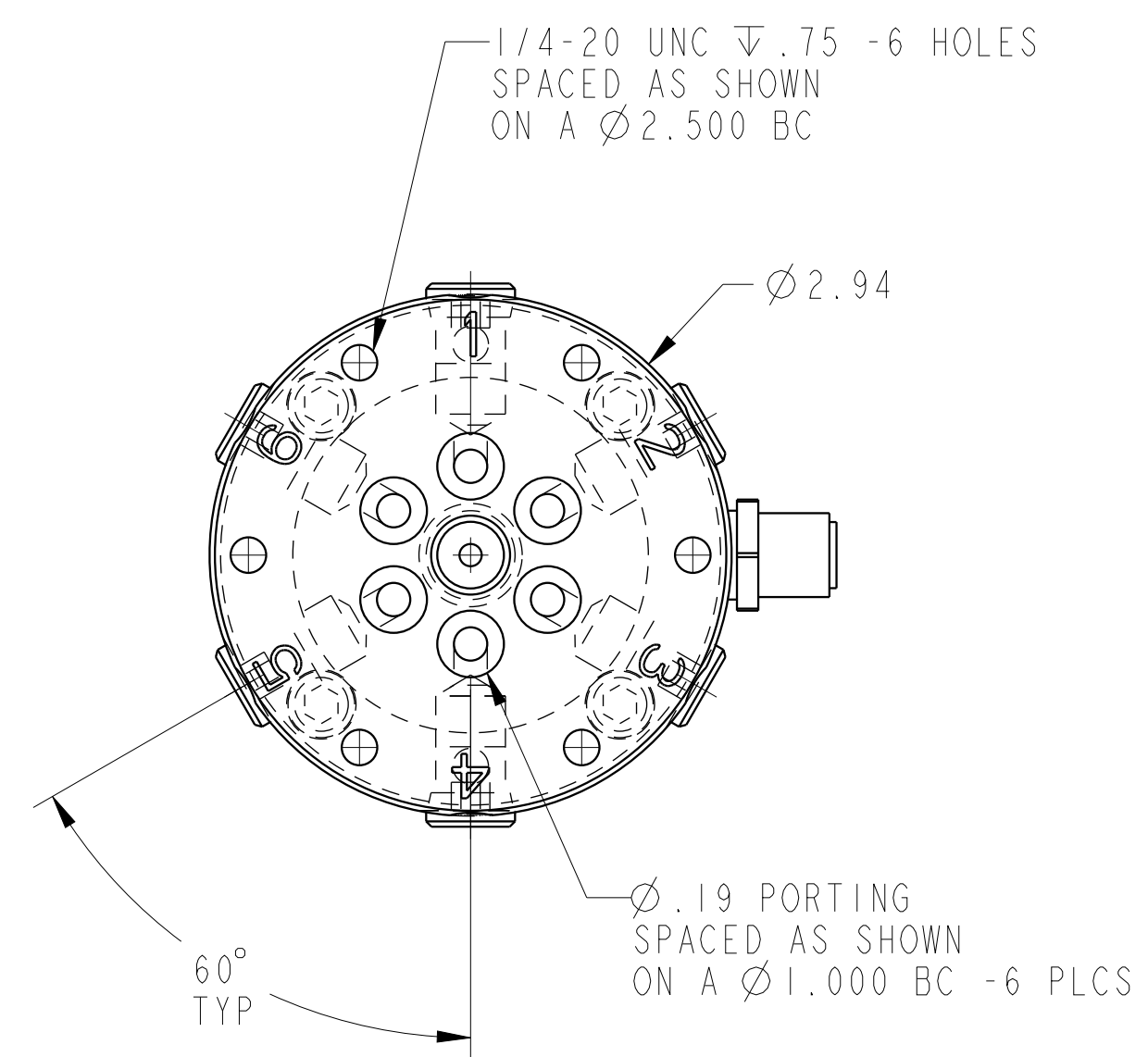
B

A

A



1LC32624601ES6A REV C ECN 5033



CAD CONTROL DRAWING		VEKTEK, INC. 1334 E. SIXTH AVE. P.O. BOX 625 EMPORIA, KS. 66801 U.S.A.

C	5033	RELEASE	JDW	02/14/23	32624601ES6A	B	RU,6 PASSAGE,MM,6 CIRCUIT
REV	IN ACCORDANCE WITH ECN	EFFECTIVE DATE	REVISED BY	DATE	REFERENCE MODEL	REF REV	
DRW BY:	K. ROEMER	DRAWING STATUS: Released			TOLERANCES DO NOT APPLY DIMENSIONS ARE NOMINAL		SIZE D
DATE:	06-29-05	PRODUCTION APPROVED FOR RELEASED STATUS ONLY					1LC32624601ES6A REV C

1

2

3

4

SHEET 1 OF 1