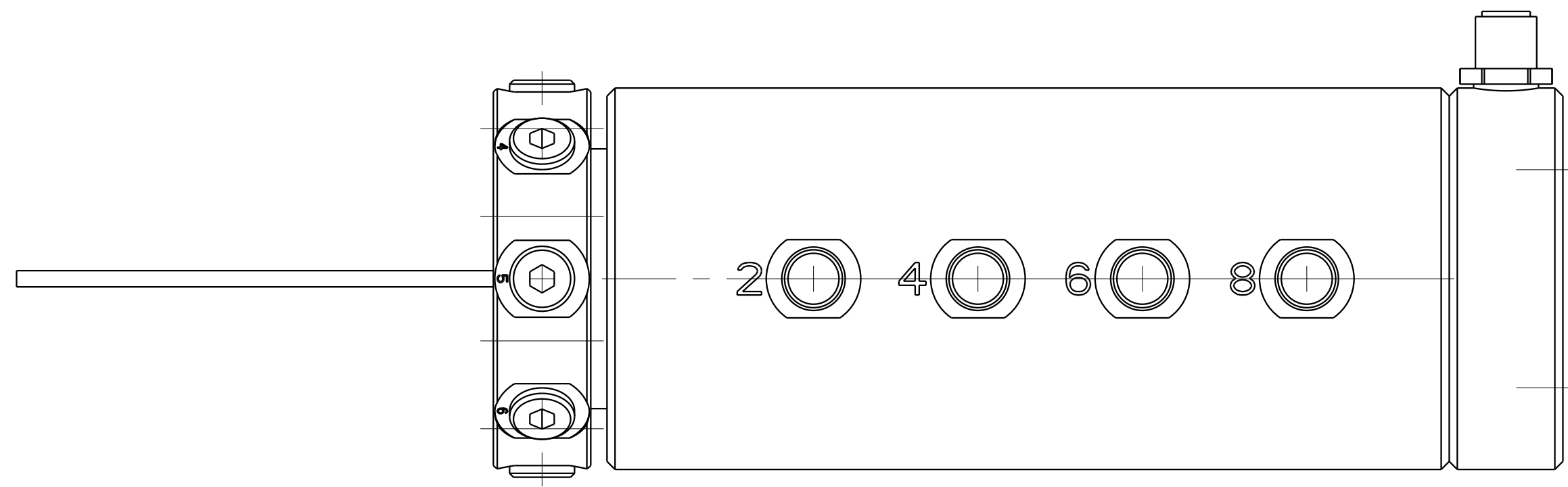
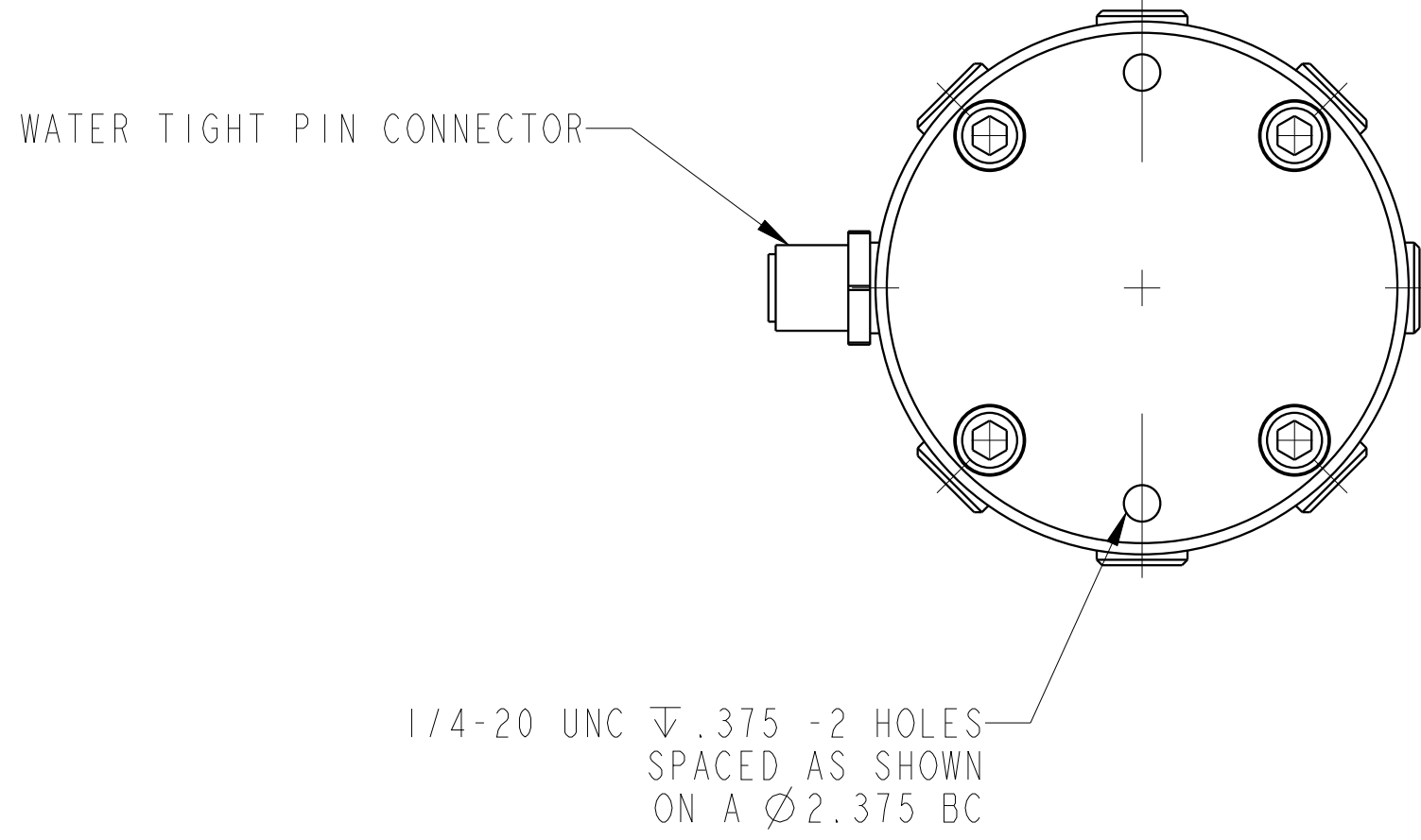
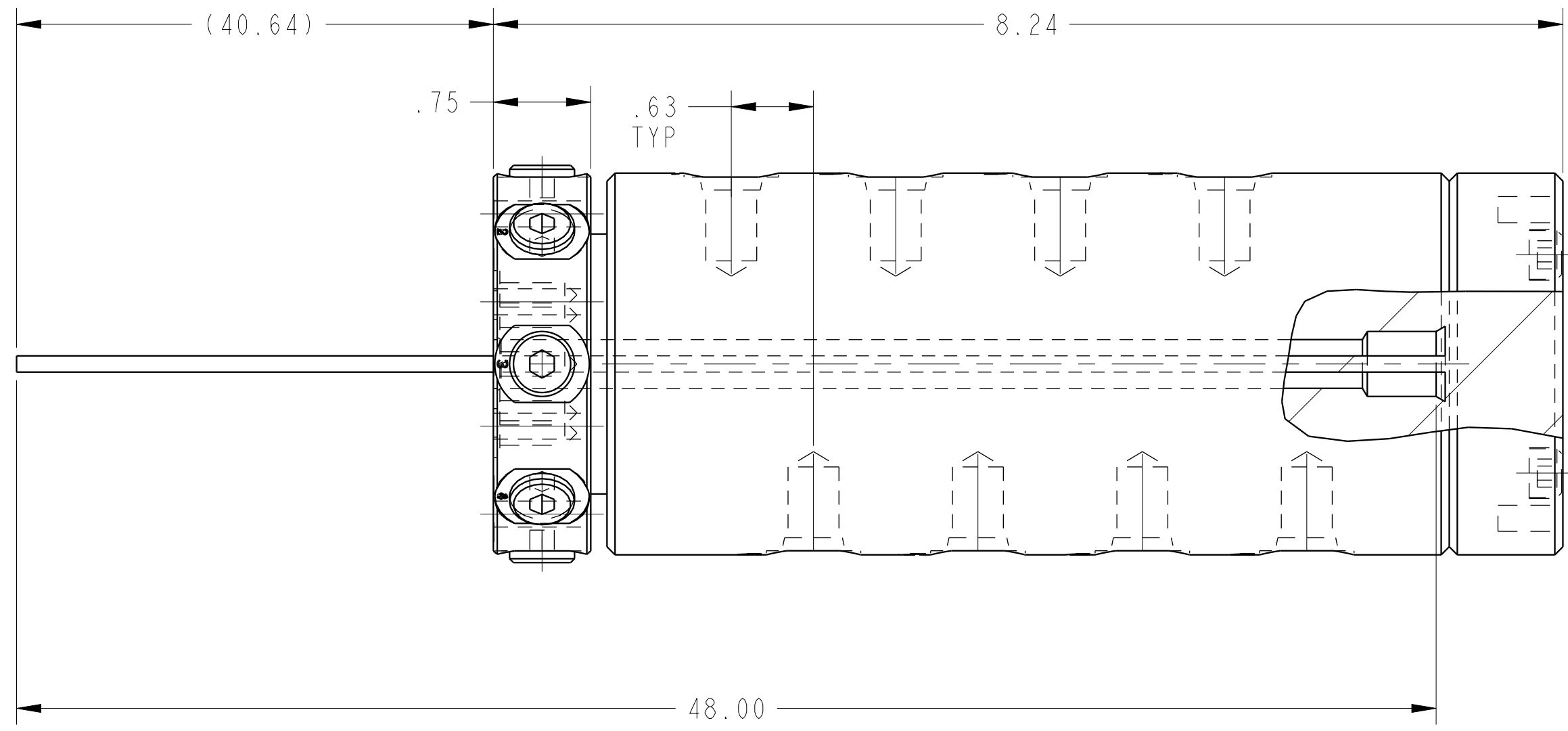
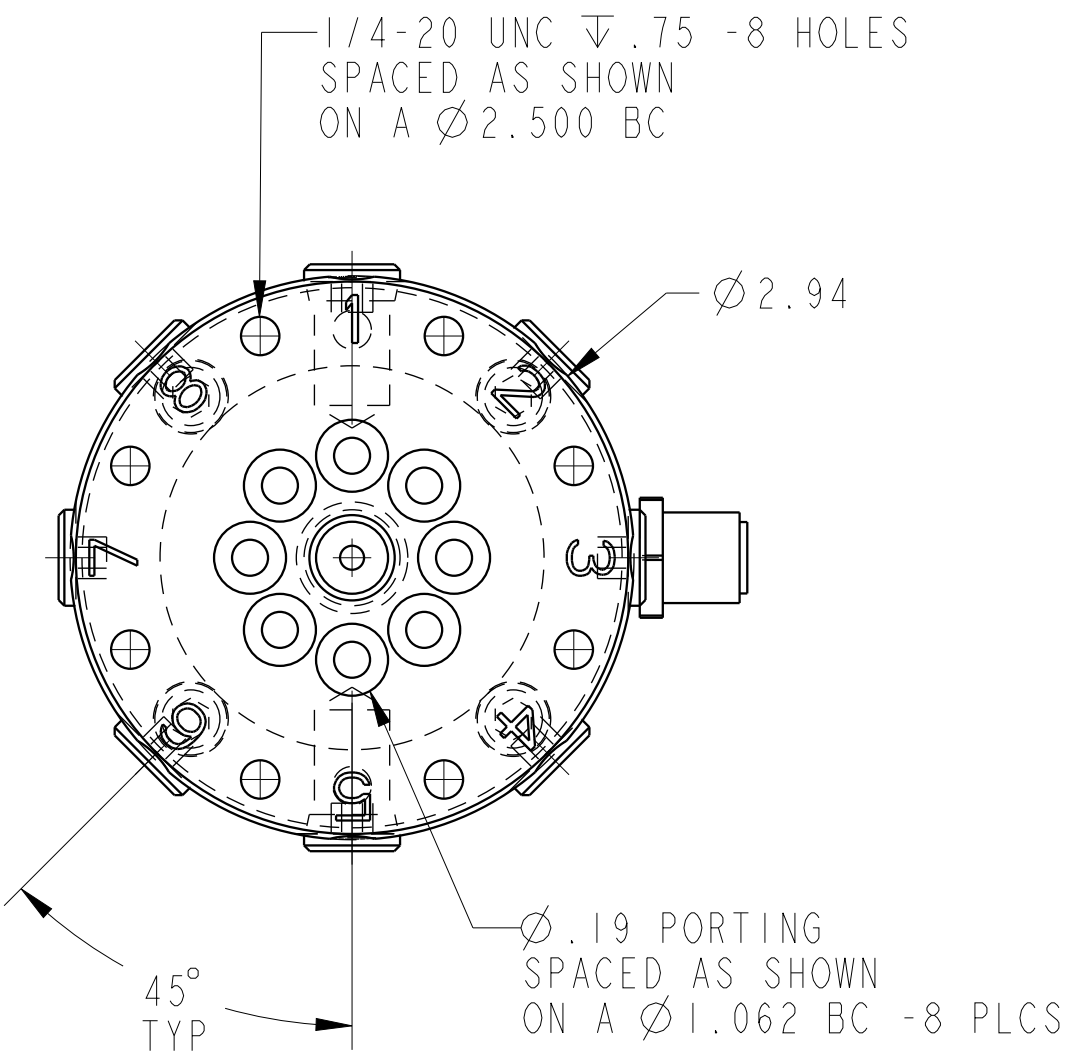
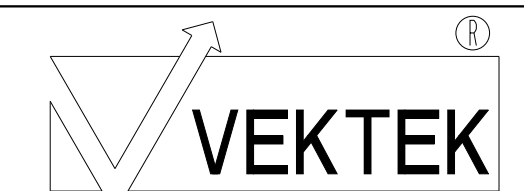


ILC3282480IES12A REV C ECN 5033



CAD CONTROL  
DRAWING



VEKTEK, INC.  
1334 E. SIXTH AVE. P.O. BOX 625  
EMPORIA, KS. 66801 U.S.A.

C	5033	RELEASE	JDW	02/15/23	3282480IES12A	C	RU, 8 PASSAGE, MM, 12 CIRCUIT
REV	IN ACCORDANCE WITH ECN	EFFECTIVE DATE	REVISED BY	DATE	REFERENCE MODEL	REF REV	
DRW BY:	K. ROEMER	DRAWING STATUS: Released			TOLERANCES DO NOT APPLY DIMENSIONS ARE NOMINAL		SIZE D
DATE:	06-29-05	PRODUCTION APPROVED FOR RELEASED STATUS ONLY					ILC3282480IES12A REV C