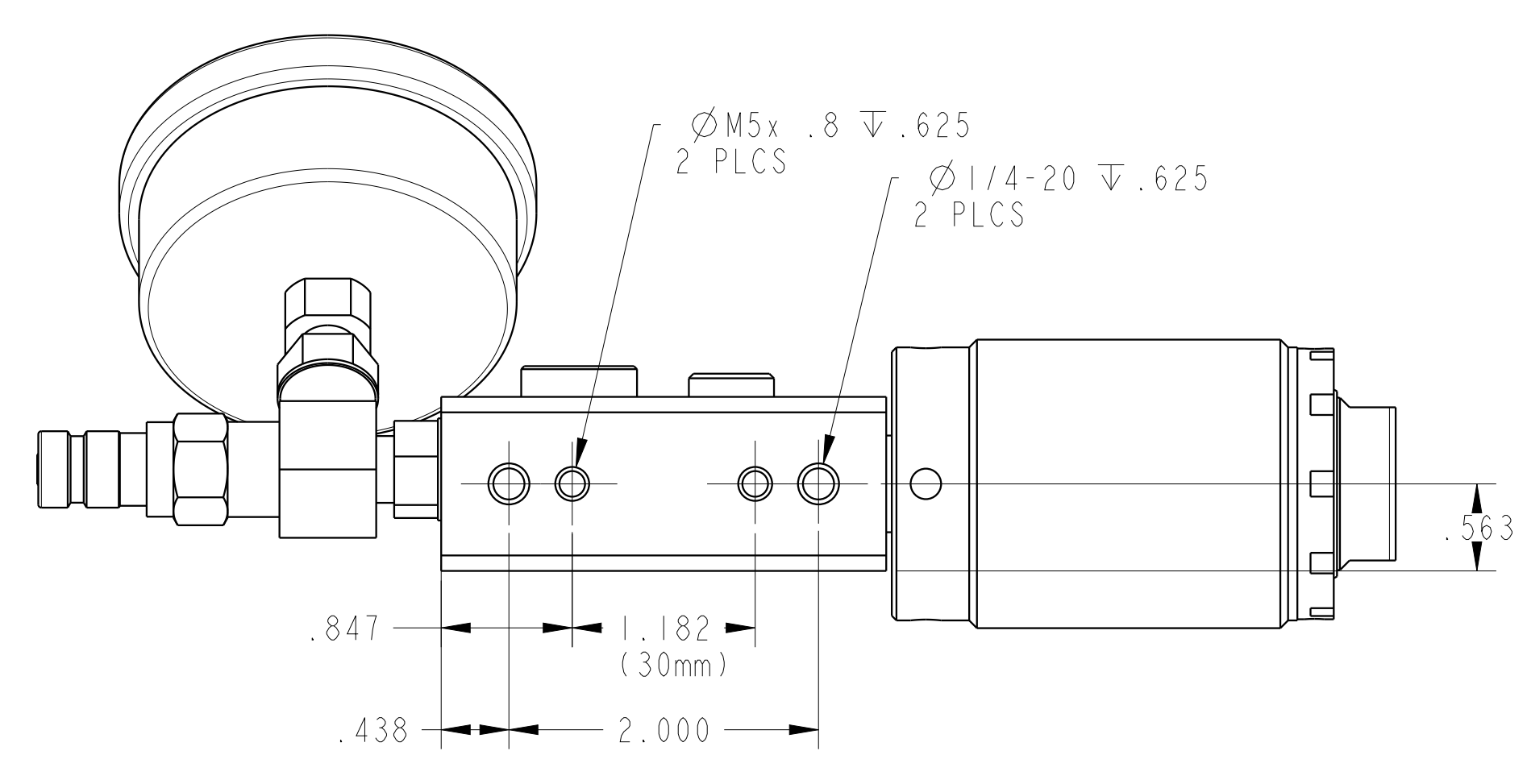
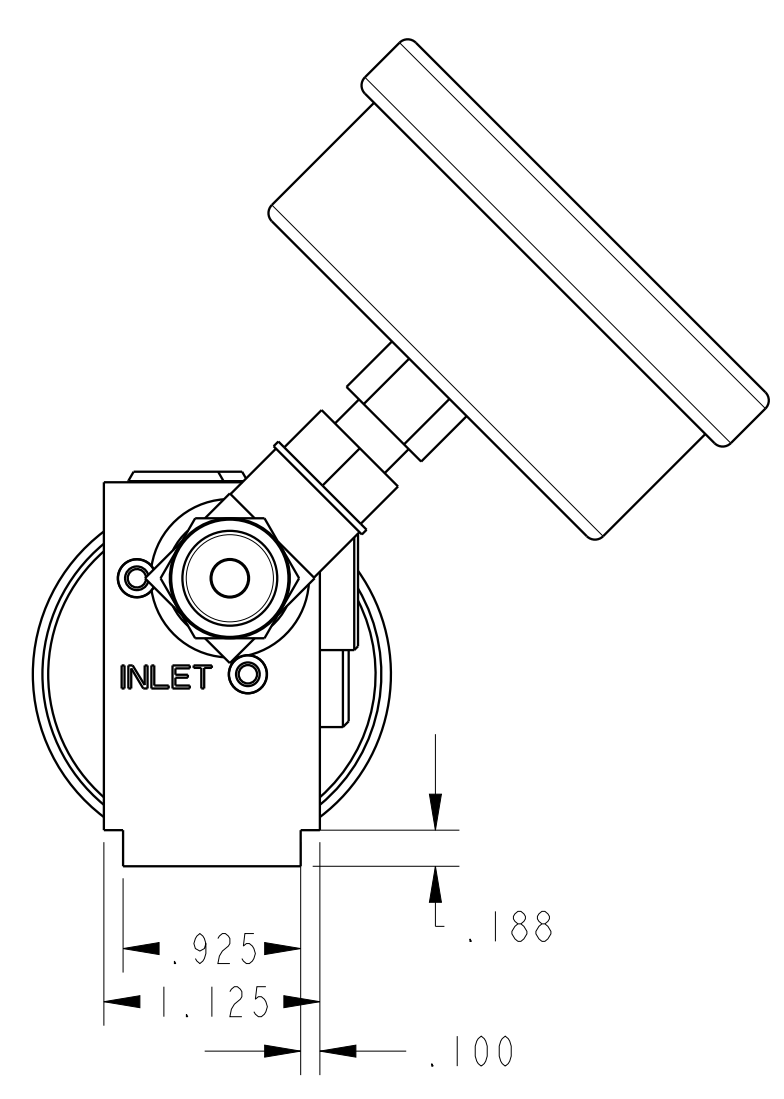
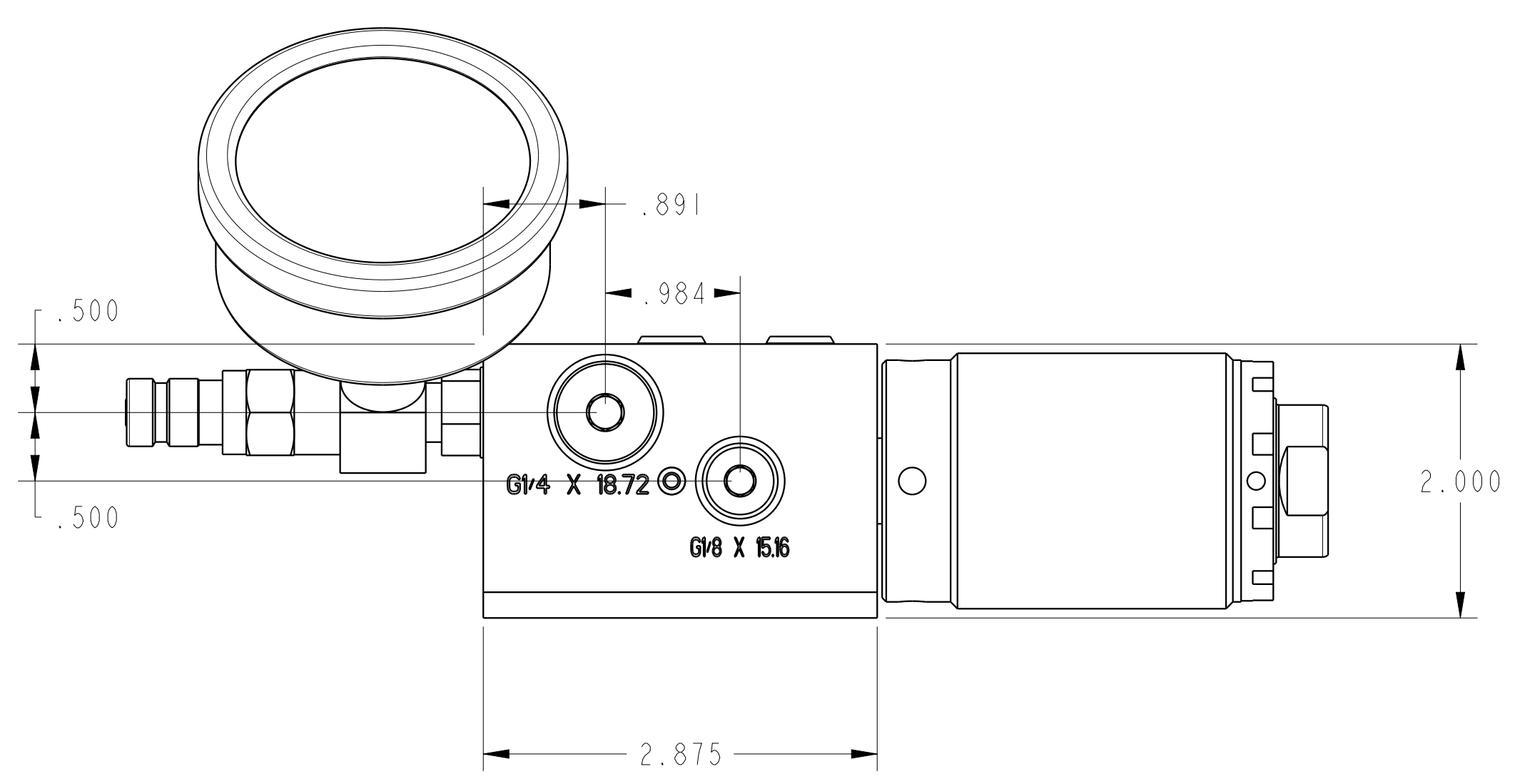


ILC33011700 REVA ECN3582



CAD CONTROL DRAWING		 VEKTEK, INC. 1334 E. SIXTH AVE. P.O. BOX 625 EMPORIA, KS. 66801 U.S.A.	
A	3582	RELEASE	ALS
REV	IN ACCORDANCE WITH ECN	EFFECTIVE DATE	REVISED BY
DATE: 9/21/18	DRAWING STATUS: Released		9/24/18
PRODUCTION APPROVED FOR RELEASED STATUS ONLY		33011700	A
TOLERANCES DO NOT APPLY DIMENSIONS ARE NOMINAL		REFERENCE MODEL	REF REV
SIZE D	ILC33011700	ASSY, PRESSURE SET, IP VALVE	
FORM FEG036, Rev. B		REV A	