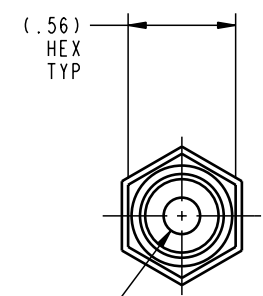
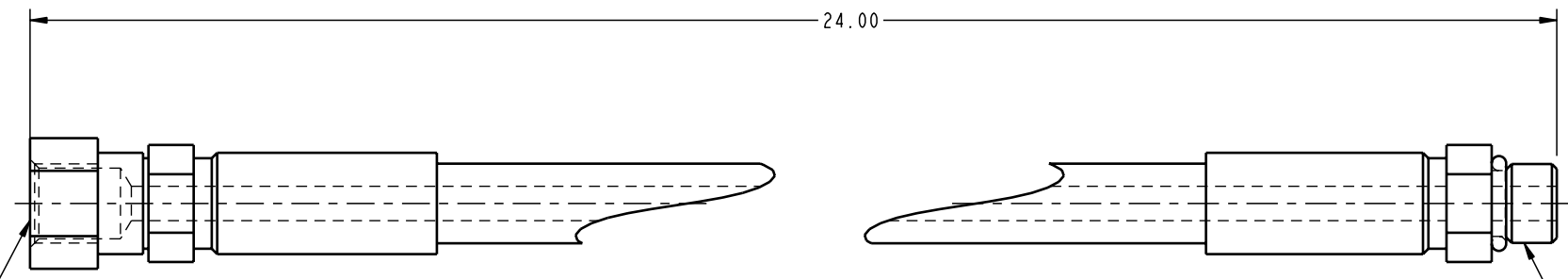


JIC 37° FEMALE SWIVEL
CRIMPED END
(7/16-20 UNF)



SAE 4 O-RING BOSS MALE
SOLID CRIMPED END
(7/16-20 UNF)

ILC35113302 REV A ECN 1376

**CAD CONTROL
DRAWING**



VEKTEK, INC.
1334 E. SIXTH AVE. P.O. BOX 625
EMPORIA, KS. 66801 U.S.A.

A	1376	RELEASE	K. ROEMER	08-17-05
REV	IN ACCORDANCE WITH ECN	EFFECTIVE DATE	REVISED BY	DATE
DRW BY:	K. ROEMER	DRAWING STATUS: Released		
DATE:	08-17-05	PRODUCTION APPROVED FOR RELEASED STATUS ONLY		

35113302	D
REFERENCE MODEL	REF REV
TOLERANCES DO NOT APPLY DIMENSIONS ARE NOMINAL	SIZE B

HOSE, HYDR, 3/16 x 24	
ILC35113302	REV A

FORM FEG036, Rev. A