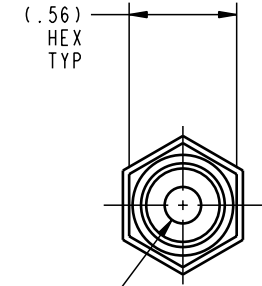


.625
HEX

JIC 37° FEMALE SWIVEL
CRIMPED END
(7/16-20 UNF)

60.00



.56
HEX
TYP

Ø .19
ID

SAE 4 O-RING BOSS MALE
SOLID CRIMPED END
(7/16-20 UNF)

ILC35113305 REV A ECN 1376

CAD CONTROL DRAWING		VEKTEK, INC. 1334 E. SIXTH AVE. P.O. BOX 625 EMPORIA, KS. 66801 U.S.A.	
		SIZE B	REV A

A	1376	RELEASE	K. ROEMER	08-17-05	35113305	D	HOSE, HYDR, 3/16 x 60
REV	IN ACCORDANCE WITH ECN	EFFECTIVE DATE	REVISED BY	DATE	REFERENCE MODEL	REF REV	*****
DRW BY:	K. ROEMER	DRAWING STATUS: Released			TOLERANCES DO NOT APPLY DIMENSIONS ARE NOMINAL		SIZE B
DATE:	08-17-05	PRODUCTION APPROVED FOR RELEASED STATUS ONLY					ILC35113305

FORM FEG036, Rev. A

SHEET 1 OF 1