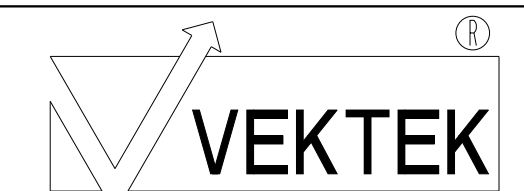
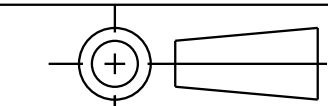


**CAD CONTROL
DRAWING**



VEKTEK, INC.
1334 E. SIXTH AVE. P.O. BOX 625
EMPORIA, KS. 66801 U.S.A.



C	2933	RELEASE	Two	02/02/16	55011402	L	BOOSTER, 40:1, W/O CTRL
REV	IN ACCORDANCE WITH ECN	EFFECTIVE DATE	REVISED BY	DATE	REFERENCE MODEL	REF REV	*****
DRW BY:	DRAWING STATUS: Released			TOLERANCES DO NOT APPLY		SIZE	ILC55011402
DATE:	PRODUCTION APPROVED FOR RELEASED STATUS ONLY			DIMENSIONS ARE NOMINAL		D	