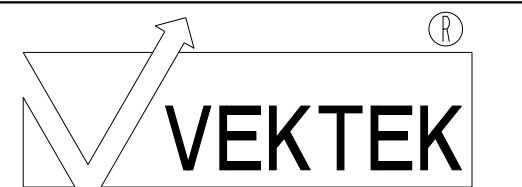
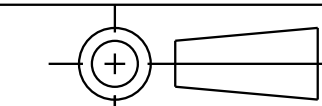


ILC55954500 REV A ECN 3111
SCALE 0.500

CAD CONTROL
DRAWING



VEKTEK, INC.
1334 E. SIXTH AVE. P.O. BOX 625
EMPORIA, KS. 66801 U.S.A.



A	3111	RELEASE	KR	11/17/16	55954500	A	AY, AWP, 50, 1HP, 1P, 100-120V, 5G, NP
REV	IN ACCORDANCE WITH ECN	EFFECTIVE DATE	REVISED BY	DATE	REFERENCE MODEL	REF REV	*****
DRW BY:	KR	DRAWING STATUS: Released			TOLERANCES DO NOT APPLY DIMENSIONS ARE NOMINAL		SIZE D
DATE:	11/17/16	PRODUCTION APPROVED FOR RELEASED STATUS ONLY			I L C 5 5 9 5 4 5 0 0		REV A