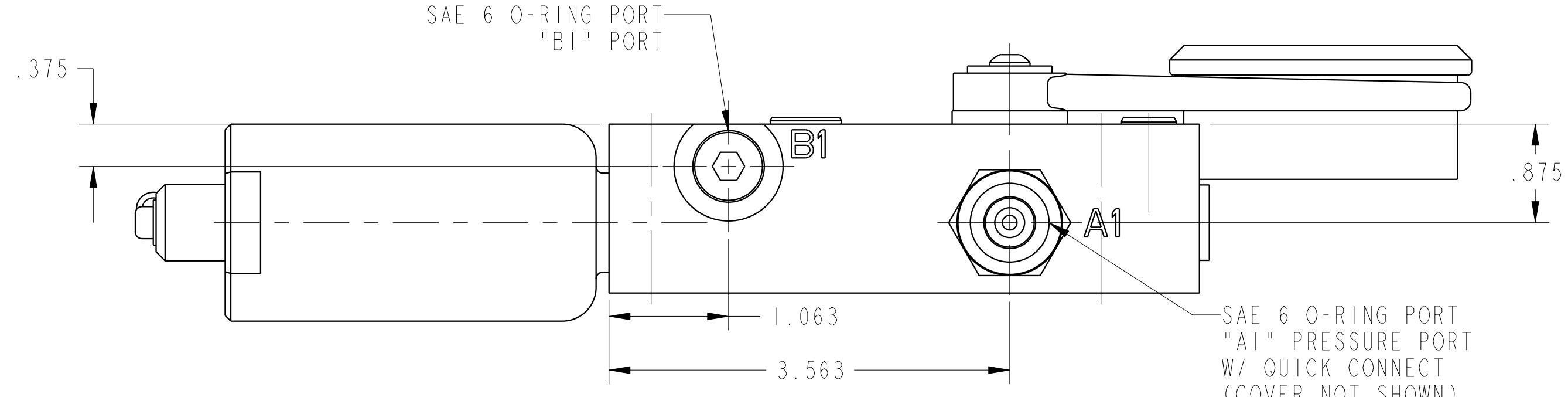
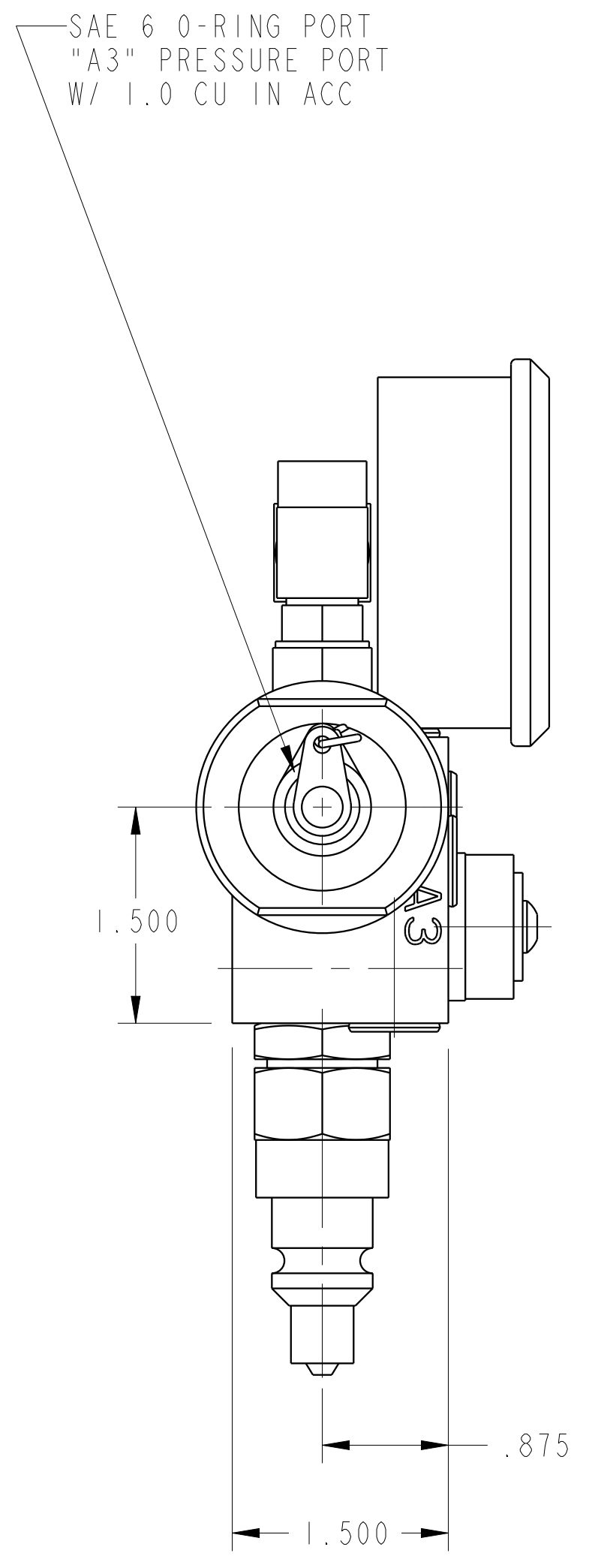
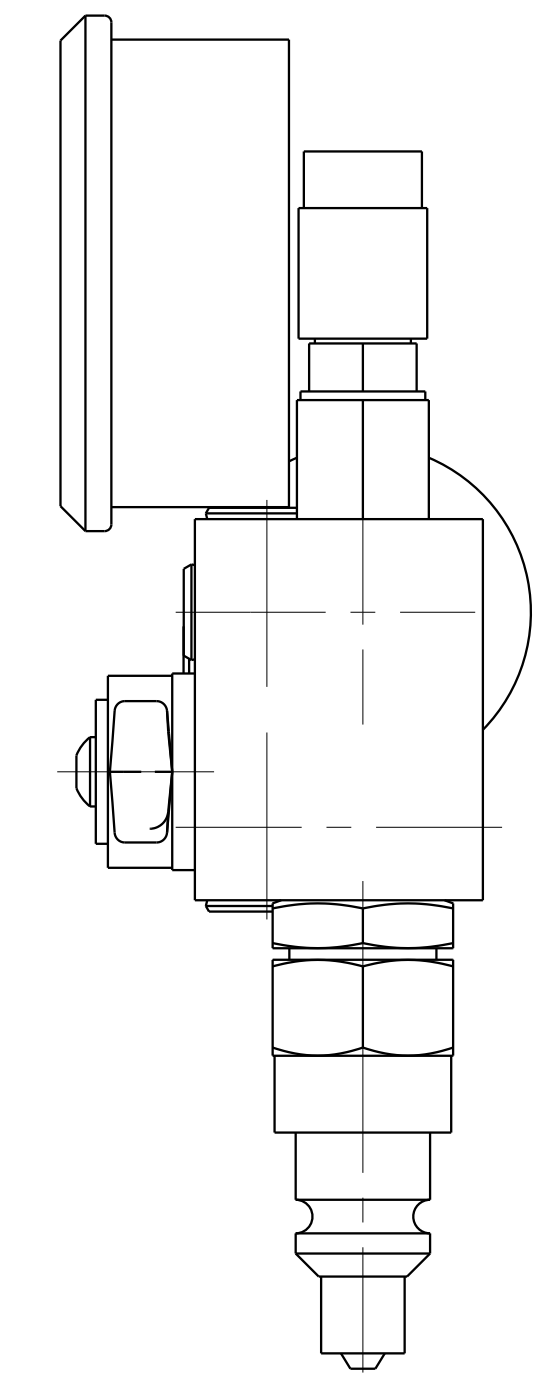
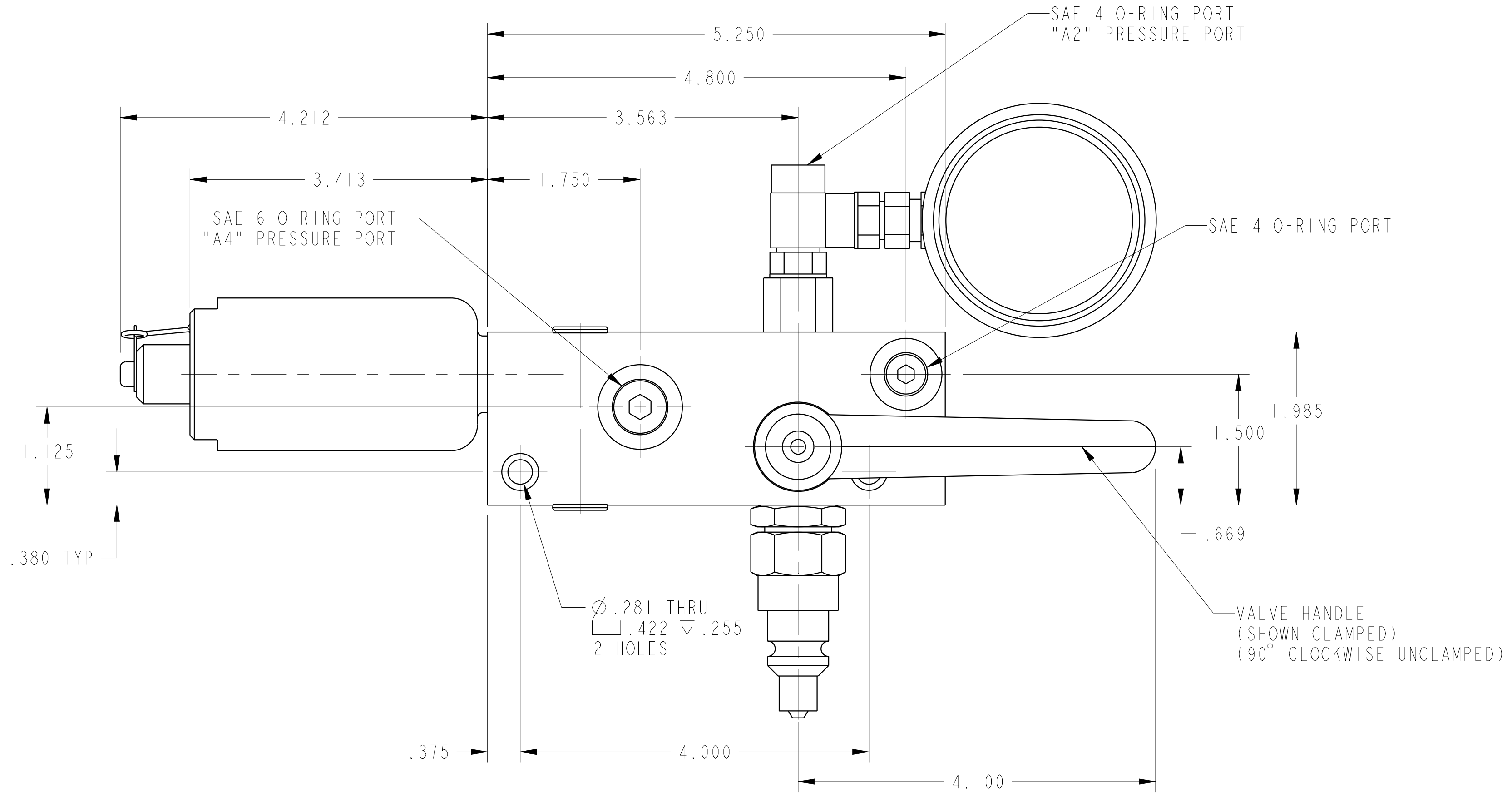
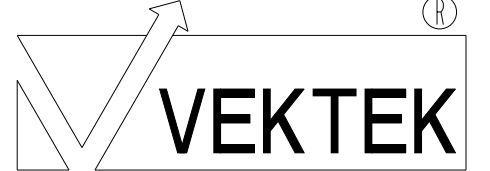
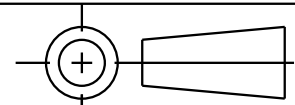


ILC56000203 REV B ECN2947



CAD CONTROL DRAWING		 VEKTEK, INC. 1334 E. SIXTH AVE. P.O. BOX 625 EMPORIA, KS. 66801 U.S.A.	
			
B 2947	RELEASE	GAR	1/7/16
REV IN ACCORDANCE WITH ECN	EFFECTIVE DATE	REVISED BY	DATE
DRW BY: K. ROEMER	DRAWING STATUS: <b>Released</b>		56000203 N
DATE: 05-25-05	PRODUCTION APPROVED FOR RELEASED STATUS ONLY		PD, HORZ, 1500 PSI, 1.0 CU IN ACC
			REFERENCE MODEL REF REV
			TOLERANCES DO NOT APPLY DIMENSIONS ARE NOMINAL
			SIZE D ILC56000203 REV B
			FORM FEG036, Rev. B