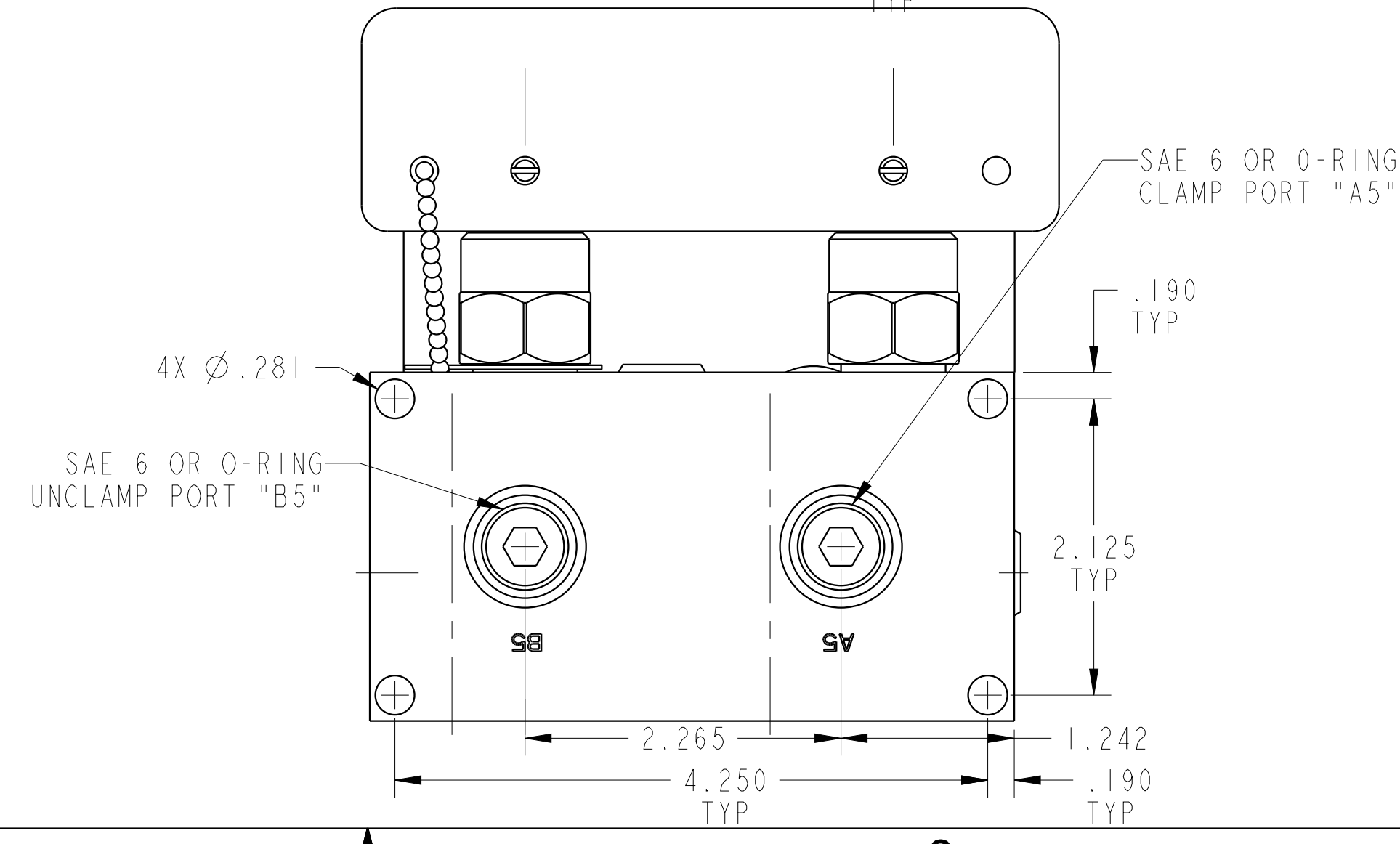
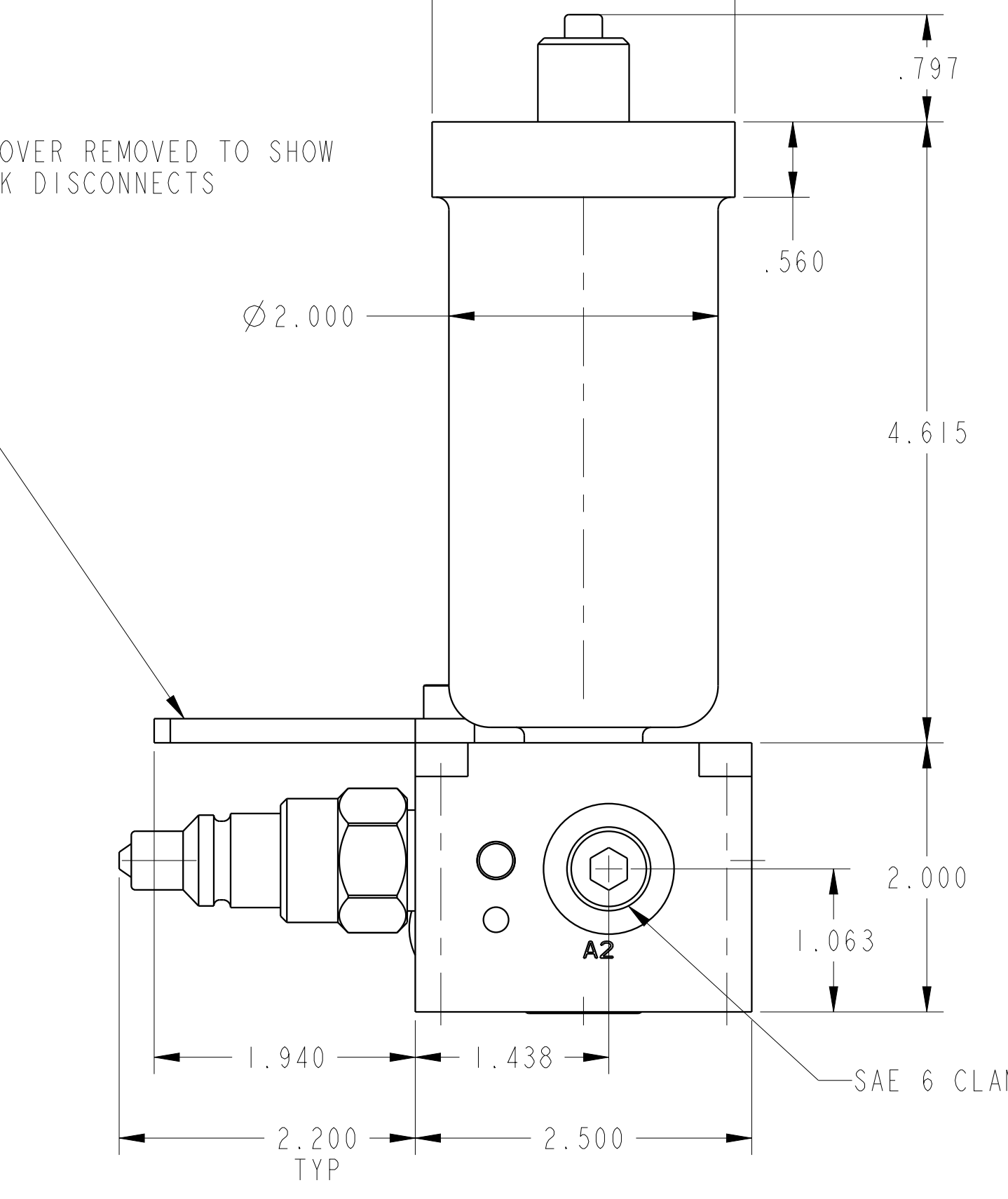
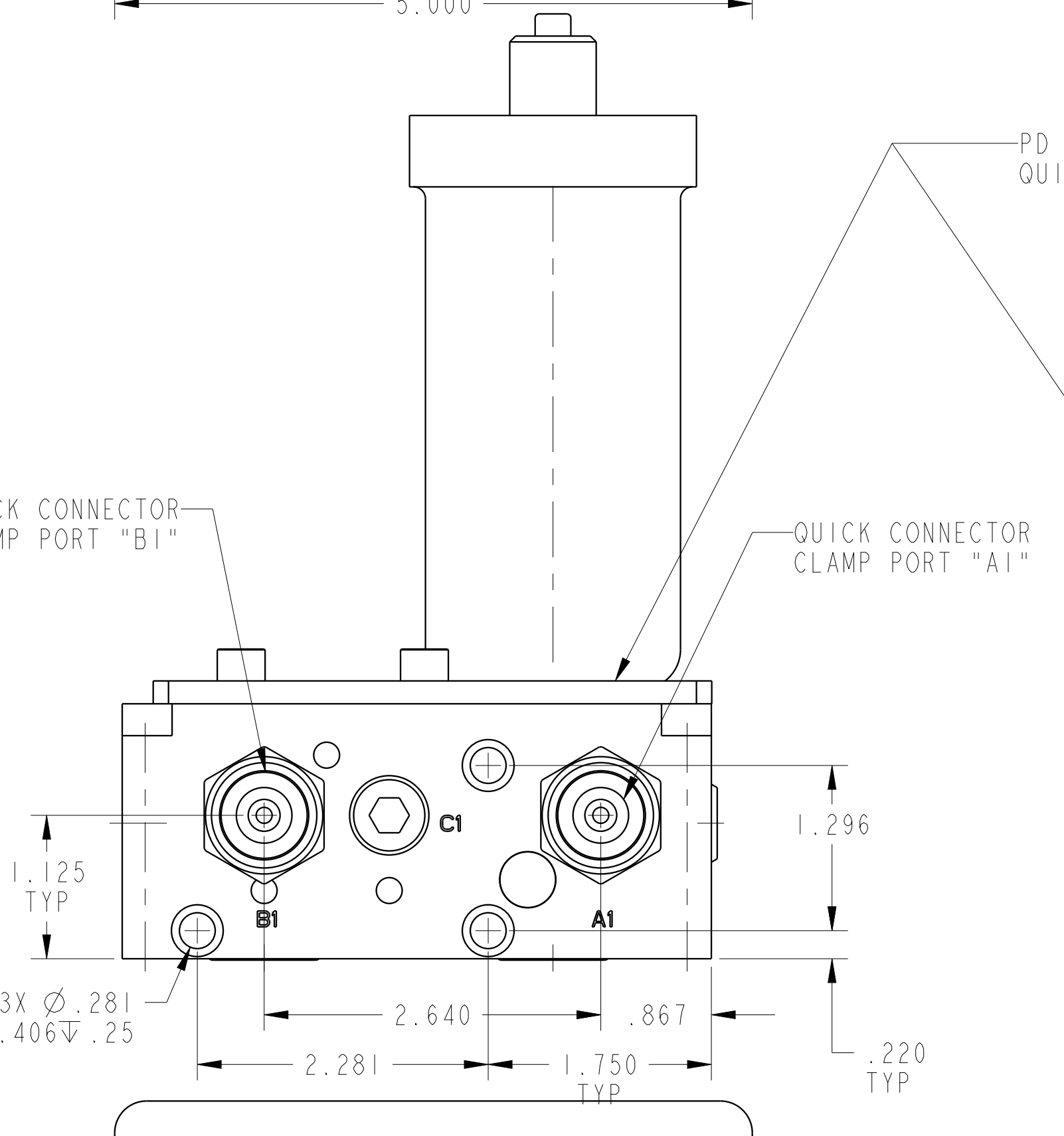
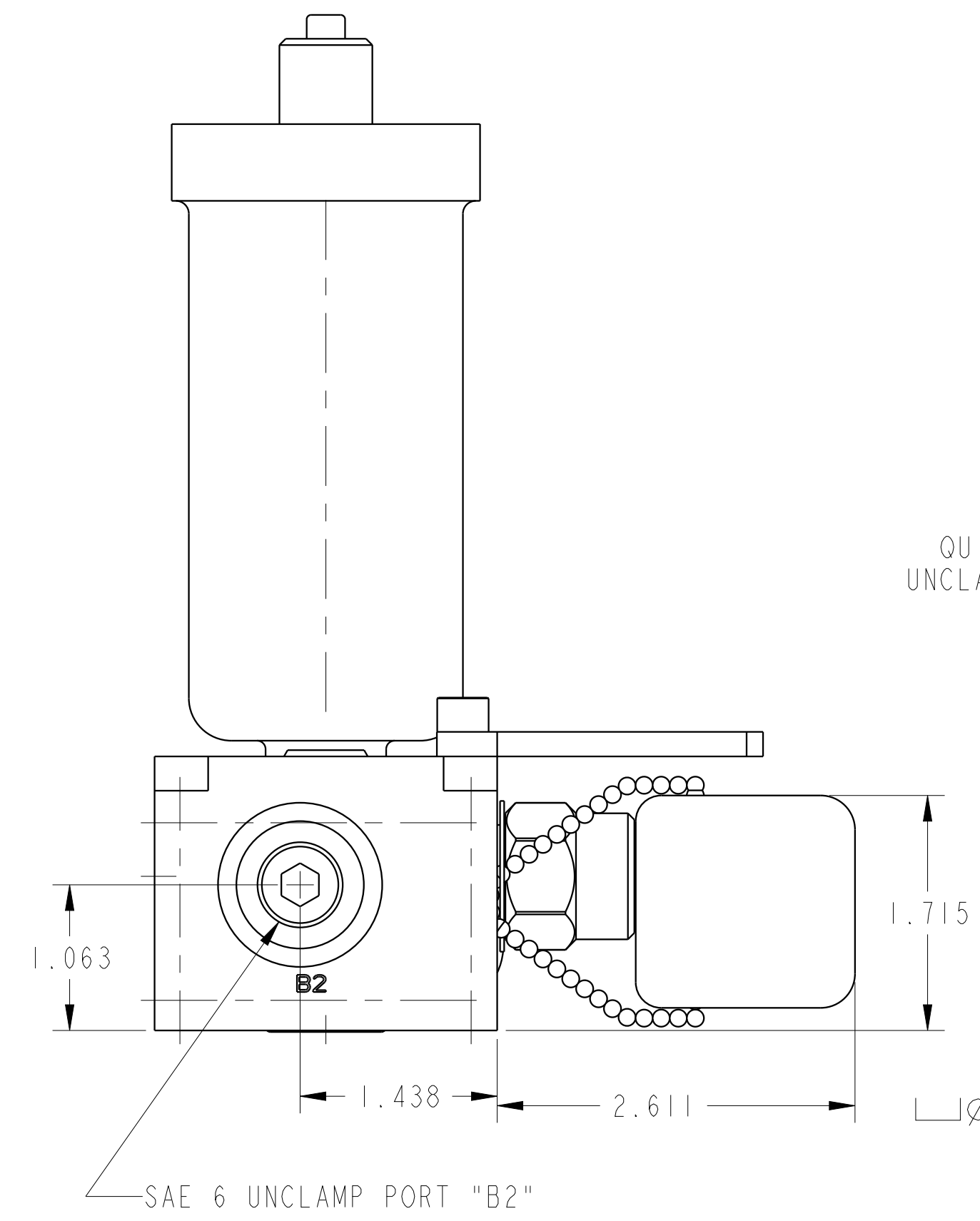


SCALE 0.500  
ILC56000519 REV C ECN4131



**CAD CONTROL DRAWING**

VEKTEK, INC.  
1334 E. SIXTH AVE. P.O. BOX 625  
EMPORIA, KS. 66801 U.S.A.

C	4131	RELEASE	NPETERS	3/17/20	56000519	E	PD, 2H, DUAL, 3500, EXT ACC
REV	IN ACCORDANCE WITH ECN	EFFECTIVE DATE	REVISED BY	DATE	REFERENCE MODEL	REF REV	*****
DRW BY:	DRAWING STATUS: <b>Released</b>				TOLERANCES DO NOT APPLY DIMENSIONS ARE NOMINAL		SIZE D
DATE:	PRODUCTION APPROVED FOR RELEASED STATUS ONLY						ILC56000519 REV C